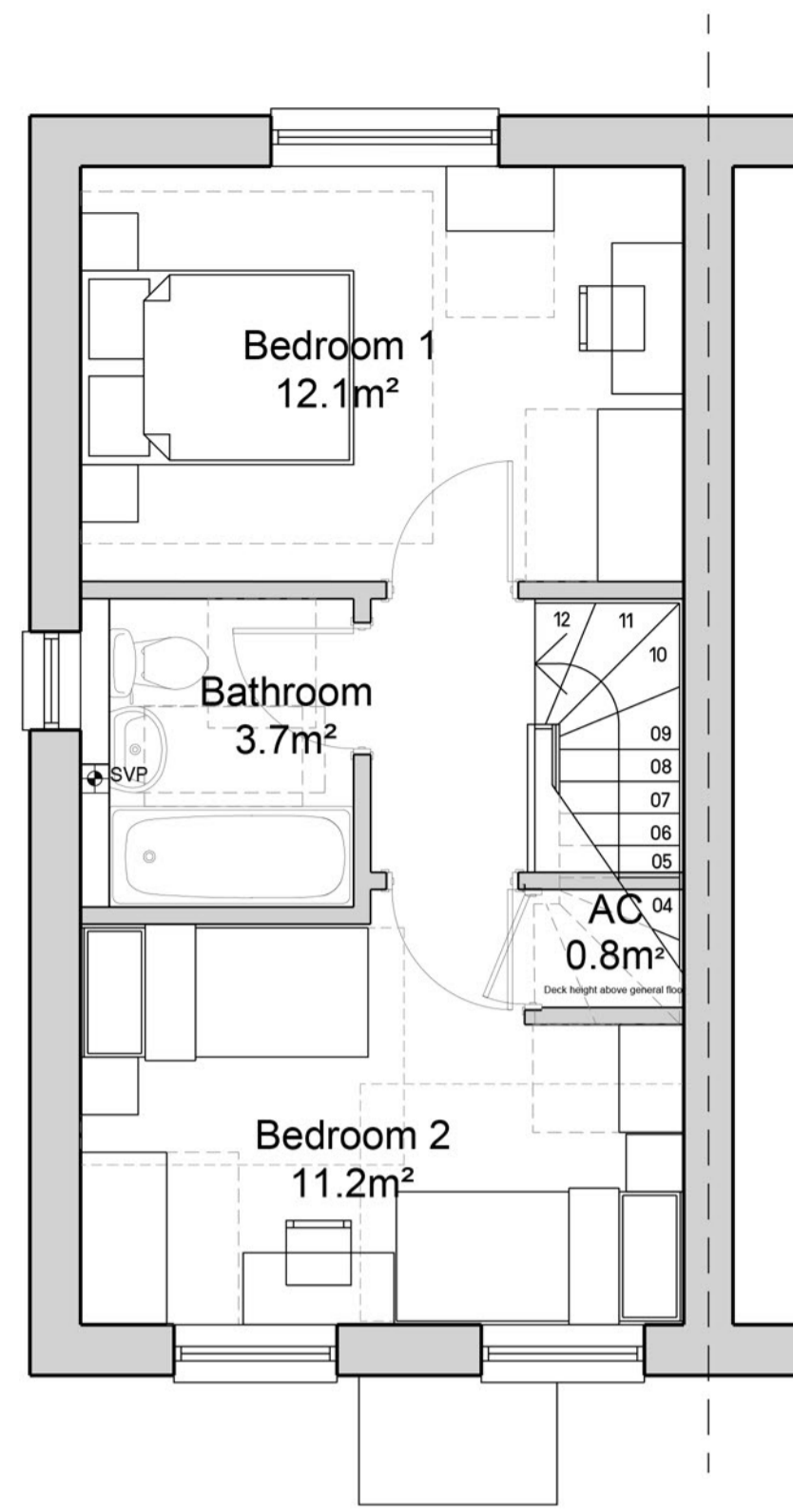


GROUND FLOOR - 33.8m²



FIRST FLOOR - 33.8m²

Materials Schedule

- 1 Interlocking Concrete Roof Tiles- Slate Grey
- 2 Red Multi Facing Brick
- 3 Cream/ White Through Colour Render
- 4 White uPVC Windows
- 5 Secured by Design External Door
- 6 Black uPVC Rainwater Goods
- 7 Soldier Course Detail
- 8 Brick on Edge Cill Brick Detail
- 9 GRP Canopy

House Type Waverley
2 Bed / 4 Person House
Area: 67.6m² (727.6 sqft)



Notes
- Copyright in this drawing remains the property of BM3 Architecture Limited.
- Do not scale this drawing
- Work to figured dimensions only.
- Contractors and consultants are to advise BM3 Architecture Limited of any discrepancies.

Revision
A MATERIAL KEY INCLUDED
B AMENDMENT TO SIDE ELEVATION

Date
24.10.18
30.10.18

By
AK
AK

Chkd
PJS
PJS

CDM Notes

Project
PRINCESS AVENUE
TELFORD

Drawing
HOUSE TYPE WAVERLEY

Client
The Wrekin
Housing Trust

Scale 1:50@A1	Dated SEPT 2018	Job No. 52807	Drawing No. D13	Drawn by AK	Checked PJS	CISB Element PLANNING	Revision B
------------------	--------------------	------------------	--------------------	----------------	----------------	--------------------------	---------------

