



Proposed West Elevation
Scale 1:50

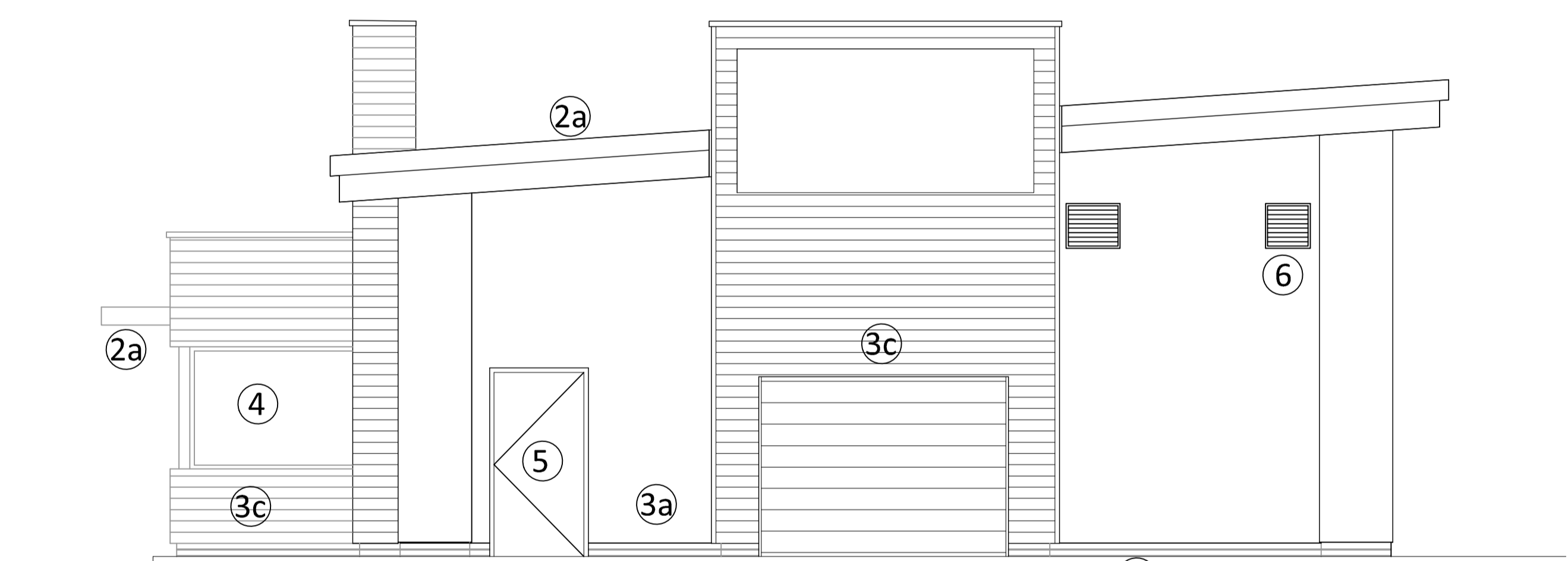


Proposed South Elevation
Scale 1:50

Entrance



Proposed East Elevation
Scale 1:50



Proposed North Elevation
Scale 1:50

Service Door

3b

1. ROOF:
PLASTISOL COATED PROFILE BUILT UP SYSTEM, PROFILE OUTER SHEET, 180mm ROCKWOOL (OR SIMILAR APPROVED) INSULATION, UNDERSIDE OF ROOF SOFFIT TO BE SPRAYED BLACK TO SUIT TENANTS REQUIREMENTS, EXTERNAL ROOFING SHEET COLOUR ANTHRACITE GREY REF RAL 7016, ROOF BUILD UP TO ACHIEVE MIN U VALUE OF 0.25W/M²K, LAID TO FALLS 4 DEGREES.
2. FASCIAS AND SOFFIT:
- 2a 2mm FLAT POWDER COATED ALUMINIUM FLASHING APPLIED TO FASCIA, SUPPORTED OFF SHEETING RAILS. ALL FIXED BACK TO STEEL FRAME IN ACCORDANCE WITH ENGINEERS DETAILS, COLOUR ANTHRACITE GREY REF RAL 7016.
FLAT ALUMINIUM CLADDING PANEL SOFFIT, ANTHRACITE GREY REF RAL 7016, SUPPORTED FROM HORIZONTAL RAILS ALL FIXED BACK TO STEEL FRAME IN ACCORDANCE WITH ENGINEERS DETAILS.
- 2b 2mm THICK ALUMINIUM BACKED PANELS, POWDER COATED PANTONE 202C (COSTA RED)

3. WALLS:
- 3a BLOCKWORK TO RECEIVE THRU COLOUR RENDER - COLOUR RAL 9010 WHITE.
- 3b COURSES UP TO DPC LEVEL IN FACING BRICKWORK - WIENERBERGER STAFFORDSHIRE SMOOTH BLUE, AVAILABLE VIA BRICKLINK TEL0113 258 6600 WITH TILCON W14 MORTAR - SUBJECT TO PLANNING APPROVAL.
- 3c HORIZONTALLY LAID TIMBER CLADDING FIXED TO SUB FRAME OFF BLOCKWORK - BRITISH WESTERN RED CEDAR (THUJA PLICATA) WITH A NON VOC EXTERIOR HIGH BUILD OIL FINISH NOTE: A SAMPLE OF TIMBER CLADDING IS TO BE CONSTRUCTED ON SITE FOR APPROVAL
4. GLAZING:
THERMALLY BROKEN ALUMINIUM SHOPFRONT WINDOW SYSTEM (KAWNEER OR SIMILAR APPROVED), FRAME COLOUR ANTHRACITE GREY RAL 7016, SYSTEM TO ACHIEVE A MIN U-VALUE OF 2.2W/M²K FOR ALL SOUTH, SOUTH-EAST AND SOUTH WEST FACING GLAZING, DEVELOPER TO CONSIDER SOLAR REFLECTIVE FILM, SCREENS TO RECEIVE STANDARD DOT MANIFESTATION AS INDICATED ON ELEVATIONS.
5. SERVICE DOOR
FACTORY FINISHED POWDER COATED STEEL DOORS AND FRAMES- COLOUR RAL 7016 WITH RAL 7016 FRAMES
6. LOUVRES
2No LOUVRES WITH INTERNAL INSECT MESH, FINISHED RAL 7035 LIGHT GREY

rev	date	by	description
A	15/08/18	JF	Building updated.
-	01/05/18	JF	Drawing created

CLIENT
mfg Motor Fuel Group
Building 2, Abbeyview
Everard Lane, St Albans AL1 2QU

PROJECT LOCATION
Walkers Clock Service Station
A518 New Trench Road
Telford, TF2 8JY

DRAWING
Proposed Building Elevations

Wyeth Projects Services
The Cart Shed, Amberley Court,
Amberley Lane, Millford, Surrey,
GU8 5EB, United Kingdom
Tel: +44 (0)1483 424704
Email: enquires@wyethprojects.com
© This drawing is the copyright of WYETH PROJECTS SERVICES LTD.

Date: May 2018
Scale: 1:50

Draw By: JF
Dwg No: WPS-MFG-067-P-07

A1
original size
Rev: A

PLANNING