

CHILDREN AND YOUNG PEOPLE SCRUTINY COMMITTEE

Minutes of a meeting of the Children and Young People Scrutiny Committee held on Thursday, 18th April 2013, held at 6.00pm in Meeting Room 3, Darby House, Telford.

PRESENT: Councillors M. Ion (Chair), J. Greenaway, J. Loveridge, M. Smith, C. Turley and Co-optees R. Aveley, S. Harris and S. Rayner.

Attending: Cllr. P. Watling, Cabinet Member Children, Young People & Families; L. Johnston, Director Children & Family Services; J. Collins, Assistant Director Education & Skills; K. Swallow, School Organisation Services Manager; K. Perry, Assistant Director Children's Safeguarding; A. Yapp, CIC, EDT and Fostering Manager; S. Jones, Scrutiny Officer.

CYPSC-33 MINUTES

RESOLVED – that the minutes of the meeting of the Children & Young People Scrutiny Committee held on 12th March 2013 be confirmed and signed by the Chairman. There were no matters arising that would not be referred to later in the meeting.

CYPSC-34 APOLOGIES FOR ABSENCE

Cllrs. G. Green and A. Mackenzie and Co-optees S. Ali, A. Atkinson and M. Ward.

CYPSC-35 DECLARATIONS OF INTEREST

None

CYPSC-36 PROVISION OF PRIMARY SCHOOL PLACES

The Chair reminded members that the review of the Children in Care Placement Strategy was complete and the Committee was moving on to the next review, the provision of primary school places. The Chair tabled draft Terms of Reference and lines of enquiry which would be circulated for comment with a view to endorsement at the next meeting.

The Chair then invited the Assistant Director and School Organisation Services Manager to provide some context to the report circulated as Appendix B on the Planning of Primary School Places 2013-2018.

The School Organisation Services Manager made the following points:

- The report is updated annually every Easter.

- The census totals and projections to 2017 were shown on page 5. There had been a rise in the birth rate since 2007 but numbers had still not reached the 2002 peak.
- Successive governments had over time changed the planning guidelines. Current guidelines allowed a 5% surplus of places to allow for parental choice. When numbers dipped, surplus space within schools had been used for other activity but could be re-designated to add additional capacity. It was not always easy to reclaim the space - for example if it was occupied as a nursery or as an ICT suite which had become a working curriculum area for the whole school. Space used as a community room was easier to reclaim because a smaller room could be used instead. For example, Donnington Wood had had capacity for 70 admissions which had been reduced to 50 but was now back to 60 children per year group.
- The “PAN” is the Published Admission Number and relates to the capacity of the building i.e. the number of notional work spaces.
- There were three ways of expanding primary places:
 - a) Bringing existing accommodation back into use (re-designation)
 - b) Extending existing primary schools (e.g. Newdale Primary)
 - c) New schools (e.g. Ironstone Primary in Lawley)
- There were three main sources of funding for school places as set out on page 49:
 - a) Capital receipt – this had been used in the Building Schools for the Future (BSF) programme. Excess land identified from a school reorganisation could be sold off if there was no overall net loss of playing field land. The Council could grant itself permission to do this but decisions had to be submitted to DfE and the Schools Adjudicator with a justification to ascertain that the land to be sold will not be needed for a free school and be granted permission to sell.
 - b) DfE Formulaic Basic Need – this is a bi-annual allocation made to local authorities to target pupil place priorities in their area. The amount of capital available had gone down. (The 2013-15 allocation had been confirmed as £1.2m.) Funding bids for the Bridge School and Ironstone Primary are to be made to the Targetted Basic Needs pot.
 - c) Section 106 contributions – a formula is applied to project the number of additional pupils a housing development will generate and the Council can command financial contributions for educational facilities from the developer through Section 106 agreements. For new housing developments, additional pupil numbers are built into projections at a rate of 0.28 primary pupils and 0.16 secondary pupils per home – the formula used and agreed by DfE. Section 106 money is usually paid on occupation of the new houses. One of the difficulties is matching the planning of school places with when new houses are ready for occupation – if new places are built in too early a) there is no money to fund the places and b) pupils can leave local schools to fill the new provision, leaving no space for children from the new development when it is occupied. If they are built in too late schools in the area surrounding the development may become oversubscribed and this has a

knock-on effect on local families. Lightmoor Primary was built to create capacity for the new houses in Lightmoor Village, and its planned admission number was increased gradually to match the number of places available as closely as possible to the rate of occupation in the development. There was a similar situation in Priorslee and Redhill primary schools when they opened to match the occupation rate of the substantial local housing development. There has been a dip in housing completions because of the recession and some developers had asked for S106 contributions to be reduced as the value of houses had dropped making it difficult for the Council to rely on the developer contribution. Also, S106 contributions are not generally levied on affordable homes which nevertheless do generate children who will need school places

- Cllr. Watling said the Council needed to be conscious of the government's agenda. The Assistant Director explained that Academies which are outside education authority control can decide independently to increase pupil numbers – Priorslee Academy had done this – and if more schools become academies then the exercise of planning places which is already difficult will become very difficult because academies could do what they want without talking to the authority. The School Organisation Services Manager said it was not clear whether or how the government would adjust the allocation of non-academy places or authorities' funding allocations if the academies grow.
- The formula for projecting places was complicated and based on birth figures and data provided by the PCT on known children 0-5 then mapped by school attendance area. Figures for 2017-18 had been projected from an average of the preceding 4 years because the children for admission that year had not yet been born. Parental preference also made projections problematic.
- The report included detailed projections for each school divided into seven planning areas. Moorfield Primary was used as an example to explain the data in the tables for each school. The "census" year is the year of intake – census data is collected three times a year for pupils on-roll. Figures for 2013 are actual number enrolled. Figures for 2014 onwards are projected numbers. The Net Capacity is based on the square footage of the school (which may vary from the PAN). Guidance allows a 5% surplus of school places to allow for parental preference. If the surplus within a 2 mile radius of the school is below the 5% threshold the Council can ask for money to expand. The Weighted Reception Intake is the % of actual intake over or under the projected intake from the schools catchment area e.g. there were 30 reception admissions in Moorfield Primary in 2013 which was 236% more than projected from the number of known children living in the school's area. The Total Housing increase in the area is the number of new properties with planning permission – where additional housing is shown in the table the projected number of children created by the development had been factored into the figures. In the case of Moorfield there were no new houses planned.

Following the presentation, members asked questions and were given the following additional information:

- Mr. Reynolds asked whether the Net Capacity or the PAN was used for planning

purposes and it was confirmed that the Net Capacity was used but tailored to the PAN. SS Peter & Paul Catholic Primary had reduced the PAN from 30 to 20 and surplus space had been re-designated but the governors had decided to move the PAN back from 20 to 30 and this would affect the surplus. Church of England schools tend to have a catchment area but Catholic schools don't because they attract pupils from further afield including outside the borough and this makes determining the numbers impossible. Co-optee Cllr. Aveley asked whether we talk to neighbouring authorities for information to find out the likely impact on school admissions in Telford and Wrekin and the Manager said that we do speak to other authorities but with the Catholic schools it was still difficult to project. Newport is a net importer of pupils as people over the border look to Newport rather than Staffordshire so we liaise with Staffordshire Council. Children do cross boundaries – the Priorslee primaries tend to lose out to the Idsall feeder schools.

- The Chair asked for more information about Newport Infant and Newport Junior Schools where the housing increase was 550. The Manager explained that schools with developments with planning permission in the area are given a weighting for housing and the projected increase in pupil numbers from the development are planned into the projections. Newport Infant school used to have a PAN of 90 but there had been a dip in births so space had been used for nursery provision and alterations were now being looked at that would create space without disrupting the nursery. Lead-in times for developments are difficult to plan but we need to plan ahead for developments which have planning permission.
- The Chair wanted to know who had drawn the conclusions presented in the report and the School Organisation Manager said that the conclusions were hers and her teams'. Overall, there was a diminishing surplus and with the number of new planned developments it was likely to diminish more so infant provision needed to be extended and then primary provision would need to be extended. The dilemma was planning places in the right place so people would go to where the places were. Schools are divided into planning areas and reported to DfE.
- The Chair invited comments from co-optee Ms. Harris as Head Teacher at Shortwood Primary. Ms. Harris said Shortwood had very high mobility with children moving in and out of the area very quickly so the numbers were a moveable feast. In 2013, 70 had been admitted to Reception and Year 1 was full. 70 was a diabolical number but could just about be managed at KS1, but at KS2 there would be 35 per class which is too many. The Manager asked why the governors had agreed to admit 70 and Ms. Harris explained that the PAN had been set at 70 because of the site size and the Section 106 funding. The old infant and junior school had been expected to be filled immediately from the new development on the old school sites but development had slowed down. There are some areas of development still to be completed. Mobility of families is also an issue within the schools attendance area– some children joined the school for 6 months then moved on. The governors would like to reduce the PAN to 60 but there would not be enough room for the displaced children in the other local schools. Dothill could possibly take some now, but St. Patrick's and Wrekin View

were already full. The Wellington primary schools were generally constrained by what they could do because the majority were up to the limit of their sites and so other solutions would need to be looked for.

- The Chair asked what the particular pressures are in the borough. The Manager said that all the Reception classes in Wellington for 2013/14 were full and there was big pressure in North Telford from new developments so there was a need to predict where new buildings would be and immigration patterns. Developments in Ketley and Hadley had put pressure on HLC Primary but the school could not be expanded because of the doughnut design and the PFI arrangements. Expansion was being planned at Meadows and Teagues Bridge Primaries to relieve pressure on HLC and they were looking at creative ways of doing this. The Assistant Director said there were also more children with profound disabilities which was putting pressure on the Bridge School – early discussions were taking place with TCAT about expanding post-16 provision and this could be reported back to the Committee in due course.
- Cllr. Greenaway questioned the finances for the new Ironstone Primary which showed a deficit of £900k. The Manager explained that the expected cost shown in the report was based on an estimate for 420 places but the school would initially be built for 210 places. It would probably be cheaper to build for 420 all at once to keep construction costs low, but it was impossible to justify keeping the empty space until the housing development was completed. The initial building work would accommodate 210 but the core facilities would have capacity to accommodate up to 420 and the buildings would be extended later. Targeted funding bids are to be considered for Ironstone and for the Bridge School/TCAT.
- Cllr. Greenaway wanted to know where the pressure on the Bridge School was coming from and if it was from applicants outside the borough. The Manager said this was partially true – there was one other special school in Shropshire, so if children live in Shifnal or Albrighton the Bridge was closer. Parents can ask for a named school on a statement and can appeal a decision if they think it is not in the best interest of the child. The Assistant Director also said that under the new schools funding formula, special schools become the agent so parents can have a conversation directly with the school and do not have to go through the local authority team. There is anecdotal evidence that some entrepreneurial heads are negotiating directly with external authorities to increase admissions and the funding that flows with them. The Head Teacher at the Bridge School is clear that her priority is for Telford and Wrekin children, but other heads out of the borough can have an affect.
- Mr. Reynolds pointed out that the Context section of the report set out the Council's statutory duty to ensure that there are sufficient school places in the borough and, further, that the Council will also seek to "Improve educational outcomes by ensuring access to high quality provision". He said he would like to see evidence of how the planning of places was balanced with education standards and how standards are maintained or improved – this was not just about the numbers. The Assistant Director said that the School Organisation Services Manager was part of the School Improvement Team which was looking at how to drive up standards and

the effect of “popular” schools on planning was being looked at.

When there were no further questions the Chair thanked the Assistant Director and Manager and they left the meeting.

The Chair referred back to the point raised by Mr. Reynolds about the balance between capacity and quality of provision and suggested this should be added as a line of enquiry for the scrutiny review. The Terms of Reference would be updated with this change and circulated to the Committee for comment and endorsement.

CYPSC-37 OFSTED REPORT ON THE FOSTERING SERVICE

The Chair reminded members that the Ofsted report on the fostering service had been published on the day of the previous meeting which had been too short notice to bring to this meeting for the Committee to consider the response and action plan. He invited the Cabinet Member and officers present to comment on the report.

The Assistant Director was gratified that Ofsted had endorsed the direction that the service was going in and said ideas for improvement were welcome. The Fostering Manager explained the inspection process. Ofsted had truncated inspections from 2 weeks to 4 days which was felt not enough to look at the full breadth of the service. Policies, procedures and other key documents had been provided in advance and the inspectors had also chosen other documents and records for unannounced spot checks during the inspection. They had not visited any foster homes but had done surveys and spoken to foster carers on the telephone. There had been focus groups with a mixed group of carers and mixed professionals which had been well attended. Ofsted had decided on the key lines of enquiry and then drilled down into them. By Day 4, they had decided their views and provided feedback.

The report commended a number of areas which was pleasing given that the service had been through so much change with the internal re-structuring. Steps had been taken in the re-structure to strengthen the fostering team with the creation of a new Team Leader posts for Kinship Care and Short Breaks although it had been difficult to recruit to manager posts and there had been a certain turnover of staff. The Manager felt that considering the change within the service, the new inspection process and the tougher standards, that the service had come out quite well. She felt that Ofsted’s assessment had broadly matched the Council’s self-assessment and was confident that the measures put in place provided a good platform to strengthen and improve the service.

The service was working hard on the action plan to address the areas highlighted by the inspectors. For example, an immediate audit had been carried out of unannounced visits which had now all been done and the policy had been strengthened by increasing the number of unannounced visits from one to two per year. The Manager now received a schedule of the unannounced visits so she could pick up on any that were outstanding. Sometimes the visits were recorded as “not done” when the social worker had visited, but the foster carer had not been at home. “Unannounced visits” are exactly that – the social worker turns up without warning to

check that everything is as it should be – and there is no guarantee that the foster carer will be at home.

On the issue of participation, there were a range of activities with the children and young people but Ofsted had not recognised them all so there was a need to demonstrate the breadth of activity better. The Manager has regular meetings with the Chair of the Foster Carers' Association (FCA) about what is working, what else could be done etc. Training had already been discussed to see how it could be improved – it could be difficult for carers working full time to access training although this was usually the non-main carer. The Policy had been reviewed with the FCA and the training manager and a draft was due to go back to the FCA for discussion. Mandatory training had been separated from non-mandatory training and the mandatory sessions had been increased from 4 to 8 per year. A training pilot aimed at new/first-time carers had been put in place to help them deal with difficult situations. The carers get help through supervision but the extra training would bolster this – new carers often need more help in dealing with the reality of challenging behaviour for the first time, especially with teenagers, and this was a particular area being looked at with the training provider. The Assistant Director said this was even more necessary because more teenagers were being placed in foster care.

Cllr. Watling said that he felt the section of the report on leadership and management was particularly harsh, and he knew it was well respected by the foster carers who receive good support. He felt the service was developing the right kind of support and was disappointed that the inspectors had not seen this. He thought the report only gave a snap-shot of what the inspectors had seen at that particular time and he was very surprised that the inspectors had not interviewed him personally, or acknowledged his contribution, as the Lead member for children and young people.

The Director acknowledged it had been a struggle to recruit some of the team leaders and said that this had had an impact on the capacity of the Fostering Manager to progress strategic issues and she commended the Manager on her hard work in delivering services through this period.

Members then asked a number of questions:

- Co-optee Cllr. Aveley asked when the last inspection had been and what the judgement was. The Manager said it was three years ago and the service had been rated "Good". The inspectors this time had said they were optimistic that if they re-visited in 12 months the service showed all the signs that it would be able to achieve a Good rating. The Assistant Director said that the Fostering Manager had set aspirational standards but the service hadn't got there as quickly as they hoped due to the period of instability previously mentioned, and also Ofsted has raised the bar.
- The Chair asked whether the rating had been a surprise. The Manager said that the overall rating had not been a surprise because in general it matched the service's self-assessment. The Assistant Director said she was disappointed with the leadership and management rating because she knew what the reality was, and was very disappointed with the rating for the "Outcomes for children and young

people” when so many of the outcomes are good and the service knows they are good.

- The Chair asked whether, given the last comment, there was anything in the report that should be challenged. The Manager said they had challenged what had been written about how we engage with children and young people because Ofsted had failed to recognise the range of engagement – that one size does not fit all – and the wording in the report had been changed. Otherwise, the report was considered fair.
- The Chair wanted to know how far the rating was from Inadequate and the Assistant Director strongly assured him it was a very long way away and that the narrative reads positively. The self-assessment had rated the service as Adequate but close to Good, except the Outcomes for children and young people which had been self-assessed as Good. Ofsted had agreed with the self-assessment except on the Outcomes but if you read the report without the rating, you might assume the rating was Good. The Manager had had an interview with the inspectors and they had told her to hold onto the positive direction the service was travelling in. The Cabinet Member said there is a good relationship with foster carers - he meets the Chair of the FCA every month and brings any issues back to the Director – and this had not been recognised by Ofsted. Cllr. Aveley said that if the inspectors had been told things that were not reflected in the report then the Council should go back to Ofsted to tell them the report is inadequate. The Chair said that organisations have a right to challenge inaccuracies – and that window had now passed – but it was difficult to challenge a judgement once made and from what officers has said, it sounded as though the report had omissions but not necessarily inaccuracies. Ms. Harris said that value-added information could be used to influence prior to a rating being decided, but once a rating had been decided it could not be influenced. Cllr. Aveley wondered whether inspectors had come with the right attitude. The Chair said that the report was what it was, and the priority now was to look to the future. The Director said that in terms of the Ofsted judgement, it was overall the same as the self-assessment.
- The Chair said he was alarmed by the language around leadership and management and asked how the action plan addressed this. The Assistant Director said leadership and management underpinned delivery of the action plan and she was confident that if the action plan was delivered the service would get a Good rating next time. The report had recognised that the management structures were there, but in their infancy. The Chair said that if the outcomes were better, then it could possibly be surmised that the leadership and management was good, but he wanted to know specifically if there were any actions in the plan that would strengthen support for colleagues. The Assistant Director relied that the critical thing was to have a stable team in place and to embed the systems – there was a strong management group – and significant improvements would flow from this. Filling the senior social worker post was a priority and would help. An offer had been made for the SSW post but unfortunately the candidate had then got a job elsewhere. Additional support had been put around the Fostering Manager. Regarding record filing systems other

parts of the safeguarding service were further ahead due to the phased roll out of Protocol, but the approach was not to go for a “quick fix” but for a project approach with key milestones and the corporate core had provided project support. Also, monitoring information about the service had improved and was more robust – the systems need to support staff to do their jobs.

- Ms. Harris wanted to know whether the training for foster carers was available in the evenings. The manager confirmed it was, and at weekends, and the number of sessions would be increased from 4 to 8 per year. The Assistant Director said that the concept of a “carer” was being taken into account – in a foster home there could be more than one carer but one was the main carer, plus more was being done as mentioned earlier on the expectations and training of new and support carers. The Manager said that foster carers from other authorities and agencies had been gravitating towards Telford & Wrekin because of the good level of support provided to carers by the authority. The Cabinet member also said that a number of things had been done to help retain the foster carers, for example the decision to increase the foster carer allowance was paying off. There was an annual foster care conference in November - the Manager had found sponsorship for the event so it was cost neutral – which the Cabinet member attended and said was a chance to speak to the foster carers and get a snap-shot of their views. Last year they had been very positive. Cllr. Greenaway said she had attended the previous year and it had been very good. The date of this year’s conference would be circulated to members after the meeting.
- Mr. Rayner made the point that three of Ofsted’s recommendations related to training for foster carers and that the measures of outcomes were data driven and could be tick-box exercises and no guarantee of quality – he said that the training and the measures need to take account of quality and our own self-assessment and should not be driven by data. The Director said that Ofsted had not wanted to meet her as the Director of Children’s Services and therefore it had not been possible to get over to them the critical importance of the service to the Council – she felt the comments about leadership and management were unfair because they did not reflect the corporate level of support for the service. Cllr. Watling felt the comments were inconsistent with Ofsted’s comments about leadership and management in the report on Safeguarding and Looked After Children services.
- The Chair reminded members that at the briefing in August 2012 on the Ofsted report on Safeguarding and Looked After Children, the Cabinet member and officers had been confident that when Ofsted inspected again the judgement would improve. He wanted to know when the service was likely to be re-inspected, and whether Ofsted were pro-actively invited to re-inspect. The Director replied that Ofsted had decided not to go ahead with a multi-inspectorate and to keep Safeguarding and Looked After Children separate, but that there may be a move towards a multi-inspection of safeguarding, looked after children, adoption and fostering services and it was sensible for the Council to wait until this had been decided and then to understand the new framework first.

The Cabinet member placed on record his thanks to the Delivery & Planning Team which had been hugely helpful with the inspection.

The Chair recognised the emotional and professional commitment of the Fostering Manager and thanked her for all her work. He hoped that when Ofsted returned to re-inspect, the service would achieve an improved rating.

CYPSC-38 SCRUTINY REPORT ON THE CHILDREN IN CARE PLACEMENT STRATEGY

The Chair introduced the draft report on the Scrutiny Review of the Children in Care Placement Strategy which was tabled for the Committee to consider and comment. A copy had been sent to the Cabinet member and officers before the meeting.

A cross-party sub-group including a co-optee had been set up and met a number of times throughout the review to take stock of work and had also met with social workers, foster carers, an IRO and was planning visits to two young people in residential care. The sub-group had met to draft the report and recommendations. The Committee had also met officers and Philip Shakesheff from West Mercia Police and had visited Jigsaw. The work had been thorough and robust.

The Chair summarised the main points as set out in the Executive Summary. There were three lines of enquiry for the review; safety, value for money and responsibility for children placed in the borough by other authorities. The key strengths identified were the appointment of a Director for Children's Services which had improved accountability and enhanced the capacity for improvement, and the joint working with partners in particular the Police. The creation of the Cost Improvement Plan and monthly Cabinet-led financial monitoring meetings had been highlighted as positive and reflecting a shared ambition, but had not been bullet-pointed as a strength because it was too soon to see the impact.

The Chair then ran through the recommendations and invited members to comment:

Recommendation 1 did not relate to the lines of enquiry but was an overarching recommendation aimed at increasing member up-take in Corporate Parenting briefings to improve awareness of issues and responsibilities. A briefing session had been held recently and had been well attended and was useful, but scrutiny had recommended that non-attendance should be published on the website.

Cllr. Turley said that there could be genuine reasons why members had could not attend and this needed to be taken into account when publishing names. The Cabinet Member said that the cross-party Corporate Parenting group had been working on e-learning sessions to make it easier for members to take part. Cllr. Aveyley commented this could be an issue for other meetings, but the Chair said in his view there was no greater responsibility for members than for looked after children. The Cabinet member said he was pleased with attendance at the cross-party group and believed this would improve members' understanding of the role.

Recommendation 2 (in two parts) related to the Quality Assurance of Systems and Processes. Members had not been satisfied that we have an overall view of the

progress of children in care. Cllr. Greenaway, who was on the sub-group, added that the evidence provided by the foster carers had showed that the statutory visits were not always happening and there was evidence from the social workers and IRO that reports were not always completed in a timely fashion. The Chair said that on the basis of the evidence, the sub-group had not been satisfied that the quality assurance of the systems was not robust enough and had made recommendation 2 a).

D.I. Phil Shakesheff, from West Mercia Police, had provided evidence to the Committee and had also been involved in discussions after the meeting. He had raised the issue about the Return Visits for missing children as a regional and national issue, and recommendation 2 b) was to bring a report to scrutiny to see what was happening locally.

Recommendation 3 in two parts related to the Independent Reviewing Officers (IROs). The meeting with the IRO had not convinced members that the IRO service was robust or independent and the recommendation was therefore for the current review to consider the management arrangements and the possibility of moving the service to the scrutiny team, with an annual report to be presented to the Committee.

Ms. Harris asked whether anything was done to review the work of the IROs and how they are QA'd. The Assistant Director said she was mystified by this view – she said the IROs quality assure the work of the social workers and they pick up issues with the social workers and senior managers and that this happened. Issues with the training of IROs were being addressed and live observation was happening. The Cabinet member said that Ofsted had picked up on capacity issues with the IROs and this was being looked at as part of the current review. The Chair emphasised that there was a unanimous view from members who had attended the meeting with the IRO about the lack of evidence of challenge and independence and there was a real strength of feeling on this point but it was up to the Cabinet member and officers to consider the recommendation and respond accordingly. Cllr. Aveley said he was not sure whether the recommendation should specify the suggestion of the move to the scrutiny team and there could be other options.

Recommendation 4 related to the framework contracts for external care and the Jigsaw care contract. Cllr. Aveley declared an interest as Governor of HLC which was running the Jigsaw school contract but the Chair said the recommendation only referred to the Jigsaw houses and Cllr. Aveley suggested this should be clarified in the report. The Chair said the Committee had heard that there were 144 providers on the regional framework contract for residential care and members had questioned the ability to drive costs down effectively with such a high number of providers. Members had had concerns about the Jigsaw care contract and had requested a report back on savings and outcomes within six months of contract award. There had been concern about the gate-keeping of quality reports for providers on the framework contracts and had recommended that this should be built into the framework.

Recommendation 5 related to clarity of reporting costs on the Dashboard and there had been much discussion about this at previous meetings.

Recommendation 6 related to other authorities' children living in the borough. A

children’s home provider conference in Shropshire had identified 40 children living in homes in Shropshire that the police had not previously been aware of and it was recommended that a similar conference should be held in Telford & Wrekin. The Director informed the Committee that she had written to Ofsted some time ago on behalf of DI Shakesheff raising the issue of sharing information this information with the police, but had received a reply advising that this would be in breach of protocol. She had passed a copy of the letter to DI Shakesheff for his use. Ofsted subsequently changed position and agreed that the information could be shared, and the authority had now passed the information on to the police.

The Chair then checked that members had no further comments and as there were none, said that it would be taken as endorsement of the report by the Committee.

The Cabinet member thanked the Chair and the Committee for the report and for a thorough investigation, and said he would present the response when the report came to Cabinet which was due to happen in May.

The Chair thanked all the officers for their time and work during the review. He made no apology for the length of the report as he felt there was no service that was more important for the authority other than adult care.

The Director welcomed the report and scrutiny’s comments.

The Chair thanked the Scrutiny Officer and drew the meeting to a close.

The meeting ended at 7.50pm.

Chairman:.....

Date:.....

Children & Young People Scrutiny Committee

Review of Planning Primary School Places in the Borough of Telford and Wrekin

Terms of Reference

Birth rates across the borough have increased over recent years. This has created a pressure for additional primary school places that will continue for some years. This is a particularly pressing issue for some of the new housing developments. Some concerns have been raised about the impact of creating larger primary schools and the CYP Scrutiny Committee is keen to explore both the pressures and challenges that arise from any rapid expansion of primary schools in the borough and how these might best be addressed.

Lines of enquiry

- What are the implications for additional school places in the primary phase in light of projected increases in underlying population estimates for 4 year olds and 4-10 year olds?
- How will any planned expansion of existing primary schools to accommodate an increase in demand for places affect the existing the physical space within these schools e.g. playgrounds and sports fields, car parks etc?
- How is the provision of places (capacity) linked to improving educational outcomes (quality of provision)?

2013 Population Profile for Children & Family Services

Produced by Delivery & Planning

Document Governance

Title	Population Report – Children & Family areas and SureStart Centres
Purpose / Scope	To build a picture of the social, cultural and other backgrounds of the children and families served by the children's centres in the borough
Subject key words	Population, children, Impact, outcomes, deprivation, benefits, education, families
Lead Author and contact details	Helen Potter, Delivery & Planning (01952) 381118
Date of report	March 2013
Version	1.1
Sign off status	Final
Period applicable	2013
Distribution / circulation	Public

INTRODUCTION

Understanding our communities and their different needs and pressures is a fundamental part of service planning and development. This profile maps information about young people across Telford and Wrekin for our 13 SureStart Children Centre areas.

There are around 43,600 children aged 0-19 living in Telford and Wrekin and around 13,640 of these are aged 0-5. This report highlights a number of key issues which may need to be considered when delivering services to these children, young people and their families, including:

- Population characteristics of children and young people vary across the borough, including by gender, ethnicity and disabilities. There are also differences in the number of children who live in lone parent households
- There are health inequalities in the Borough, including: areas with significantly higher rates of women smoking in pregnancy (at the time of delivery) and areas with significantly lower breastfeeding initiation rates. We also have areas of the borough with high rates of obesity
- In relation to keeping children and young people safe, the rates of emergency admissions for injury to children, number of domestic abuse crimes, number of children subject to a child protection plan and in care and households in temporary accommodation vary across the borough
- Educational attainment of our young people is improving, however we can still see differences in the attainment rates of children who live in different parts of the borough
- Economic wellbeing is fundamental in giving our young people the best start in life and this report clearly shows that the number of children living in deprived neighbourhoods or in households claiming benefits varies across the borough, with some areas showing indicators of high socio-economic stress.

The purpose of this document is to

- Provide a picture of Telford and Wrekin broken down to Children Centre geography
- Build a picture of the social, cultural and other backgrounds of the families and communities in different areas.
- To help the Council and partners identify the types of families most in need of support and in evaluating the appropriateness of services and activities currently offered
- Help managers set appropriate and ambitious priorities, then evaluate priorities and targets over time as needs change

There are a number of more detailed documents available which support the data within this profile at www.telford.gov.uk/factsandfigures. More details can also be found on the final page.

CONTENTS

Introduction	3
Contents.....	4
Contextual Information	5
Geography of Children & Family Areas and SureStart Centres.....	5
Children and Family Areas, SureStart Centres, Wards and Schools.....	6
Population	7
Estimated Population Aged 0 to 5.....	7
Gender of children aged 0 to 5	8
Ethnicity of school age children	10
Ethnic Group – White: Gypsy or Irish Traveller.....	11
Lone Parent Households	13
Being Healthy.....	14
Smoking at the time of Delivery	14
Teenage Pregnancy	15
Breastfeeding Initiation	16
Breastfeeding at 6-8 Weeks	17
Immunisation and Vaccinations	18
Obesity	19
Staying Safe.....	21
Emergency Admissions for injury to children and young people.....	21
Domestic Abuse.....	23
Children subject of a Child Protection Plan.....	24
Children in Care.....	25
Households in Temporary Accommodation	27
Enjoying and Achieving	28
Early Years Foundation Stage Attainment.....	28
Year 1 Phonics	29
Key Stage 1 Attainment	30
Key Stage 2 Attainment	31
Economic Wellbeing.....	32
Deprivation	32
Job Seekers' Allowance Claimants.....	34
Young People Claiming Job Seekers' Allowance	35
People Aged 16-19 Not in Education, Employment or Training (NEETS).....	36
Number of Children in Out of Work Benefit Claimant Households.....	37
Households claiming benefits (Housing or Council Tax) with Dependent children under 20	38
Children Eligible for Free School Meals.....	39
Households in Fuel Poverty	40
.....	40
Further Information.....	41
Source Data Notes	41
Further information Sources	42

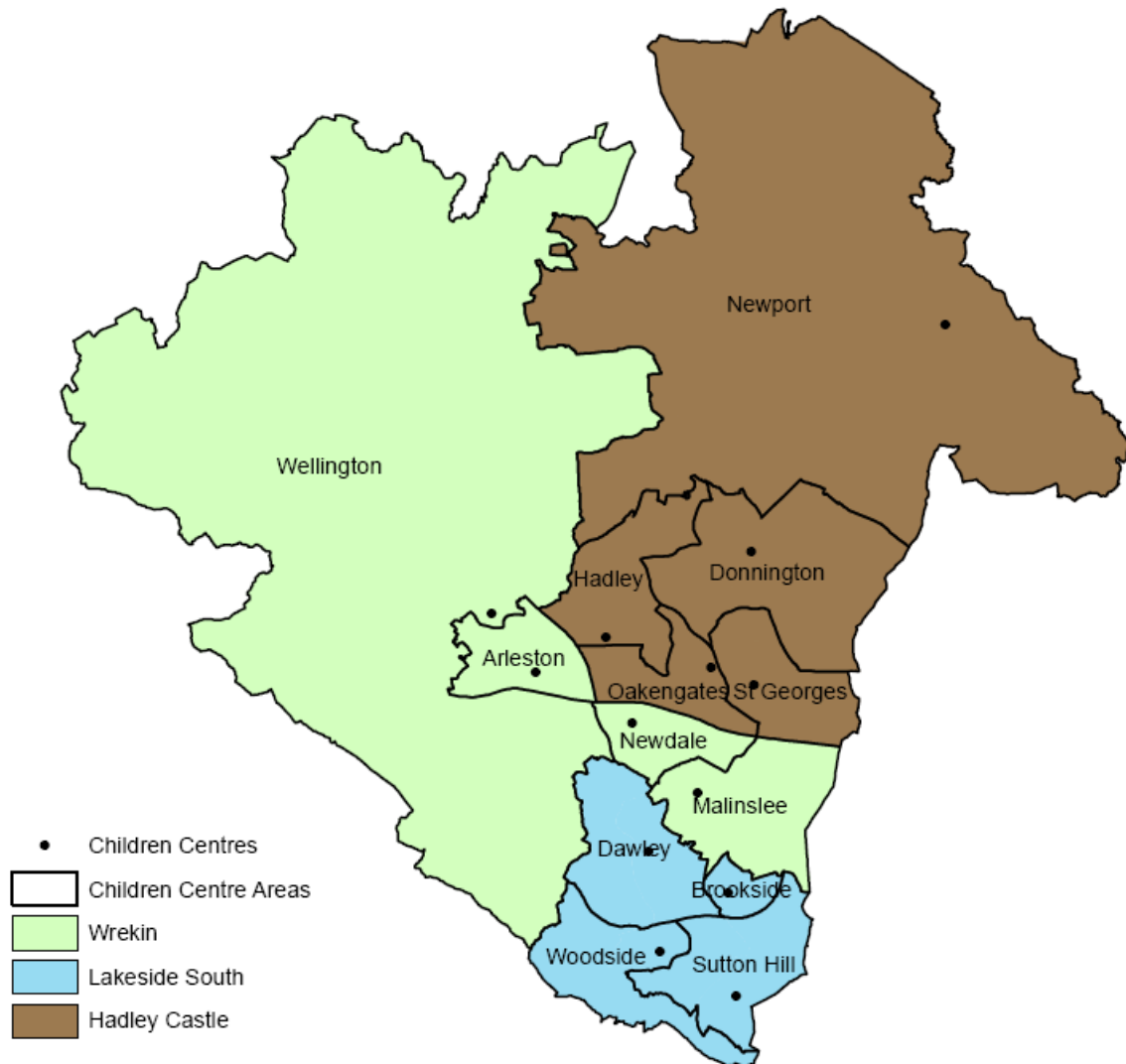
CONTEXTUAL INFORMATION

Geography of Children & Family Areas and SureStart Centres

This report uses the Children & Family areas and the SureStart areas as the geographical reporting boundaries:

- **SureStart area** – Each SureStart area contains one SureStart Children Centre. Boundaries for these areas follow the Council ward boundaries. There are thirteen areas (see table 1 for more detail).
- **Children & Family Areas** – these are larger areas made up of a collection of SureStart areas which share a management team (see table 1 for more detail).

Map 1: Make up of Children & Family Centre Areas and SureStart Areas



© Crown copyright. All rights reserved.
Borough of Telford & Wrekin Licence No. 100019694. Date. 2012

Children and Family Areas, SureStart Centres, Wards and Schools

Table 1.1: Children & Family Area ward composition

Children & Family Area	SureStart Centre	Wards	Schools
<i>Hadley Castle</i>	Donnington	Donnington, Muxton, Wrockwardine Wood & Trench	Donnington Wood Infants, Muxton ,St Matthews, St Luke's, Teagues Bridge, Wrockwardine Wood Infants
	Hadley	Hadley & Leegomery	HLC, Millbrook Primary
	Newport	Church Aston & Lilleshall, Edgmond, Newport N, S, E, W	Church Aston, Lilleshall, Newport Infants, St Peters and St Paul's, Moorfield, St Peters Edgmond, Tibberton, St Lawrence C of E
	Oakengates	Ketley & Oakengates	Meadows, Queenswood, Wombidge
	St Georges	Priorslee, St Georges	Priorslee, Redhill, St Georges
<i>Lakeside South</i>	Brookside (Windmill)	Brookside	Holmer Lake, Windmill
	Dawley	Dawley Magna, Horsehay & Lightmoor	Aqueduct, Captain Webb, Dawley C of E, Ladygrove, Lightmoor
	Sutton Hill	Cuckoo Oak, Madeley	John Fletcher of Madeley, John Randall, Sir Alexander Fleming, St Marys Catholic
	Woodside	Ironbridge, Woodside	Coalbrookdale, William Reynolds, Woodlands
<i>The Wrekin</i>	Arleston	Arleston, College, Ercall, Haygate	Short Wood
	Malinslee	Malinslee, The Nedge	Grange Park, Hollinswood, Old Park, Randlay
	Newdale	Lawley & Overdale	Lawley, Newdale
	Wellington	Apley Castle, Dothill, Ercall Magna, Park, Shawbirch, Wrockwardine	Apley Wood, Crudginton, Dothill, High Ercall, St Patricks, St Peters Bratton, Wrekin View

Source: Telford and Wrekin Council

POPULATION

Estimated Population Aged 0 to 5

Table 2.1: Estimated population aged 0-5 by SureStart Centre as at 31/08/12

Children & Family Area	SureStart Children Centre	Age												Total	
		0		1		2		3		4		5			
		number	%	number	%	number	%	number	%	number	%	number	%	number	%
Hadley Castle	Donnington	280	12.1%	300	13.0%	270	11.8%	300	13.1%	270	12.1%	290	13.0%	1,710	12.5%
	Hadley	200	8.9%	200	8.3%	200	8.9%	220	9.8%	180	8.0%	200	8.7%	1,200	8.8%
	Newport	150	6.5%	160	6.6%	160	7.3%	150	6.6%	180	8.0%	160	7.3%	960	7.0%
	Oakengates	140	5.9%	120	5.1%	120	5.1%	120	5.1%	110	4.8%	120	5.1%	710	5.2%
	St Georges	180	7.8%	140	6.2%	170	7.3%	130	5.9%	180	7.9%	160	7.1%	960	7.0%
	Total	950	41.2%	920	39.2%	910	40.4%	920	40.6%	910	40.7%	930	41.2%	5,530	40.5%
Lakeside South	Brookside	160	6.9%	110	4.6%	140	6.2%	100	4.6%	120	5.5%	120	5.2%	750	5.5%
	Dawley	200	8.5%	240	10.3%	200	8.9%	200	9.0%	200	9.0%	180	8.1%	1,220	8.9%
	Sutton Hill	160	7.0%	140	5.8%	130	5.8%	160	6.9%	140	6.1%	120	5.2%	840	6.2%
	Woodside	160	7.0%	180	7.7%	190	8.3%	170	7.5%	150	6.8%	180	7.8%	1,030	7.6%
	Total	680	29.4%	660	28.4%	660	29.3%	630	28.0%	610	27.4%	590	26.3%	3,840	28.2%
The Wrekin	Arleston	170	7.6%	170	7.1%	160	7.2%	190	8.6%	170	7.4%	160	7.2%	1,020	7.5%
	Malinslee	250	10.9%	310	13.1%	250	11.1%	250	10.9%	270	12.1%	270	11.7%	1,590	11.7%
	Newdale	90	4.1%	80	3.6%	80	3.6%	80	3.4%	80	3.6%	90	3.8%	500	3.7%
	Wellington	160	6.8%	200	8.7%	190	8.4%	190	8.5%	200	8.8%	220	9.7%	1,150	8.4%
	Total	680	29.4%	760	32.5%	690	30.3%	710	31.4%	710	31.9%	730	32.4%	4,270	31.3%
Borough	2,300		2,340		2,260		2,260		2,230		2,260		13,640		

Source – T&W GP Patient Register 2012. Note that all figures have been independently rounded to the nearest 10.

Gender of children aged 0 to 5

Table 2.2: Population aged 0-5 by gender (%) as at 31/08/12

Children & Family Area	SureStart Children Centre	Male		Female		Total
		number	%	number	%	
Hadley Castle	Donnington	890	52.0%	820	48.0%	1,710
	Hadley	600	50.3%	590	49.7%	1,200
	Newport	510	53.2%	450	46.8%	960
	Oakengates	370	52.2%	340	47.8%	710
	St Georges	480	49.9%	480	50.1%	960
	Total	2,850	51.5%	2,680	48.5%	5,530
Lakeside South	Brookside	390	52.3%	360	47.7%	750
	Dawley	640	52.7%	580	47.3%	1,220
	Sutton Hill	420	49.7%	420	50.3%	840
	Woodside	530	51.6%	500	48.4%	1,030
	Total	1,980	51.6%	1,860	48.4%	3,840
The Wrekin	Arleston	520	50.3%	510	49.7%	1,020
	Malinslee	770	48.6%	820	51.4%	1,590
	Newdale	260	52.2%	240	47.8%	500
	Wellington	580	50.4%	570	49.6%	1,150
	Total	2,160	50.6%	2,110	49.4%	4,270
Borough	7,000	51.3%	6,640	48.7%	13,640	

Source: T&W GP Patient Register 2012

What is this data telling us?

- It is estimated that there are 13,640 children aged 0-5 in Telford and Wrekin.
- The population aged 0-5 varies notably between Children & Family Areas and SureStart Children Centres:
- Hadley Castle area serves 40.5% of the 0-5 population, or around 5,530 children
- Of the SureStart Children Centres, Donnington and Malinslee have the highest 0-5 populations, Donnington with 12.5% or 1,710 children and Malinslee with 11.7% or 1,590 children
- Newdale serves the smallest 0-5 population, with 500 children or 3.7%
- There are no notable differences in the gender differences between SureStart Children Centres, with most following the borough pattern of having slightly more boys than girls

Population Age 0 to 19

Table 2.3: Population age 0 to 19

Children & Family Area	SureStart Children Centre	Estimated numbers of children aged 0-19	
		number	%
Hadley Castle	Donnington	5,400	26.2%
	Hadley	3,200	28.5%
	Newport	3,700	20.9%
	Oakengates	2,400	25.0%
	St Georges	3,500	26.2%
	Total	18,200	25.1%
Lakeside South	Brookside	2,200	28.4%
	Dawley	3,700	26.8%
	Sutton Hill	2,700	23.7%
	Woodside	2,800	28.9%
	Total	11,400	26.7%
The Wrekin	Arleston	2,900	23.5%
	Malinslee	4,600	27.4%
	Newdale	1,600	30.1%
	Wellington	4,800	23.6%
	Total	14,000	25.4%
Borough		43,600	25.6%

Source: [Telford and Wrekin Population Model 2011](#). All figures have been independently rounded to the nearest 100

What is this data telling us?

- Around a quarter (25.6%) of the population of Telford and Wrekin are estimated to be aged 0 to 19 (using the Telford & Wrekin Population Model 2011)
- Hadley Castle Children & Family area has the highest number of people age 0 to 19 (18,200), whereas Lakeside South has a slightly higher proportion of people aged 0 to 19 (26.7%)
- The SureStart Children Centres with the highest proportion of people aged 0 to 19 are Newdale (30.1%), Woodside (28.9%), Hadley (28.5%) and Brookside (28.4%)
- The SureStart Children Centres with the lowest proportion of people aged 0 to 19 are Newport (20.9%), Arleston (23.5%), Wellington (23.6%) and Sutton Hill (23.7%)

Ethnicity of school age children

Table 2.4: Ethnicity of children of school age (year 1 to 11) as at January 2012

Children & Family Area	SureStart Children Centre	White British	White European	White Irish	White Other	Mixed White and Asian	Mixed white and Black African	Mixed white and Black Caribbean	Mixed other	Black	Indian	Pakistani	Asian Other	Any Other Ethnic Group
Hadley Castle	Donnington	88%	1%	0%	0%	1%	1%	2%	1%	2%	3%	0%	1%	0%
	Hadley	67%	6%	0%	1%	1%	1%	3%	1%	2%	3%	11%	3%	0%
	Newport	95%	1%	0%	1%	1%	0%	0%	0%	1%	1%	0%	0%	0%
	Oakengates	89%	2%	0%	1%	1%	0%	3%	1%	0%	2%	0%	1%	0%
	St Georges	87%	1%	0%	1%	2%	1%	2%	1%	1%	3%	0%	2%	0%
	Total	85%	2%	0%	1%	1%	0%	2%	1%	1%	3%	3%	1%	0%
Lakeside South	Brookside	89%	2%	0%	0%	2%	0%	1%	0%	4%	0%	0%	0%	0%
	Dawley	93%	1%	0%	0%	1%	0%	2%	1%	1%	1%	0%	1%	0%
	Sutton Hill	91%	2%	0%	1%	0%	1%	2%	1%	1%	1%	0%	0%	0%
	Woodside	94%	0%	0%	1%	1%	1%	1%	0%	1%	0%	0%	0%	0%
	Total	92%	1%	0%	1%	1%	1%	1%	1%	1%	0%	0%	0%	0%
The Wrekin	Arleston	66%	3%	0%	0%	2%	0%	3%	1%	1%	1%	20%	2%	0%
	Malinslee	86%	2%	0%	0%	1%	1%	2%	1%	3%	3%	1%	1%	0%
	Newdale	89%	1%	0%	1%	1%	1%	2%	0%	0%	3%	1%	1%	0%
	Wellington	92%	1%	0%	1%	1%	0%	1%	0%	1%	2%	1%	1%	0%
	Total	83%	2%	0%	0%	1%	0%	2%	1%	1%	2%	6%	1%	0%
Borough	86%	2%	0%	1%	1%	0%	2%	1%	1%	2%	3%	1%	0%	

Source: School Census January 2012

What is this data telling us?

- We know that Telford and Wrekin has an increasing Black and Minority Ethnic Population. The 2011 Census estimated 10.5% of our population are BME, increased from 7% in 2001. The school census shows us that the proportion is higher amongst younger people, with 14% of school aged children BME
- The population is not uniform across the borough. Hadley and Arleston SureStart Children Centre populations show a notably higher proportion of non-White British school aged children (Hadley 33%, Arleston 34%, borough rate 14%)
- Five SureStart Children Centres have a BME population of school aged children of less than 10% (Newport 5%, Woodside 6%, Dawley 7%, Wellington 8%, Sutton Hill 9%)
- Hadley and Arleston show the highest proportion of White European (6% and 3% respectively) and Pakistani (11% and 20% respectively) school aged children

Ethnic Group – White: Gypsy or Irish Traveller

Table 2.5: Estimated numbers of people considering themselves Gypsy or Irish Traveller

Children & Family Area	SureStart Children Centre	Total number (all ages)
Hadley Castle	Donnington	31
	Hadley	11
	Newport	11
	Oakengates	2
	St Georges	5
	Total	60
Lakeside South	Brookside	1
	Dawley	3
	Sutton Hill	7
	Woodside	9
	Total	20
The Wrekin	Arleston	11
	Malinslee	3
	Newdale	1
	Wellington	71
	Total	86
Borough		166

Source: [2011 Census](#).

What is this data telling us?

- The 2011 Census estimated the number of people living in Telford and Wrekin with the ethnicity of 'White: Gypsy or Irish Traveller'.
- Of the 166 Gypsy or Irish Travellers in the Borough in 2011, the largest proportions were located in the Wellington (71 people) and Donnington (31 people) SureStart Children Centre areas, reflecting the two gypsy and traveller sites in the borough being located in these areas.

Disabled Children aged 0 to 5

Table 2.6: Estimated numbers of disabled children aged 0-5 in each area based on a standard prevalence rate for Telford and Wrekin

Children & Family Area	SureStart Children Centre	Estimated numbers of children aged 0-5	
		Long standing illness or mild disability*	Severe disability*
Hadley Castle	Donnington	230	2
	Hadley	160	1
	Newport	130	1
	Oakengates	100	1
	St Georges	130	1
	Total	750	6
Lakeside South	Brookside	100	1
	Dawley	170	1
	Sutton Hill	110	1
	Woodside	140	1
	Total	520	4
The Wrekin	Arleston	140	1
	Malinslee	220	2
	Newdale	70	1
	Wellington	160	1
	Total	590	5
Borough		1,860	15

*Note numbers are estimates only and use standard rates for the whole borough, see page 31 for these rates. Source: [Chimat Disability Needs Assessment](#) 2012.

What is this data telling us?

- These are indicative figures based on the population size in each area, so higher rates in Donnington and Malinslee, for example, reflect their higher populations, not that children in those areas are more likely to be disabled.
- There are estimated to be around 1,860 children aged 0 to 5 who have a long-standing illness or mild disability in Telford and Wrekin. There are estimated to be around 15 children aged 0 to 5 who have a severe disability in the borough.

Lone Parent Households

Table 2.7: Lone parent households

Children & Family Area	SureStart Children Centre	Lone parent households		Lone parent households: dependent children		Lone parent households: all children non-dependent	
		Number	%	Number	%	Number	%
Hadley Castle	Donnington	966	12.1	638	8.0	328	4.1
	Hadley	623	14.2	443	10.1	180	4.1
	Newport	570	8.1	340	4.8	230	3.3
	Oakengates	429	10.6	292	7.2	137	3.4
	St Georges	489	9.8	330	6.6	159	3.2
	Total	3,077	10.8	2,043	7.2	1,034	3.6
Lakeside South	Brookside	438	16.4	335	12.5	103	3.9
	Dawley	620	10.9	452	7.9	168	2.9
	Sutton Hill	597	12.7	393	8.4	204	4.3
	Woodside	680	18.9	531	14.7	149	4.1
	Total	2,335	14.0	1,711	10.3	624	3.7
The Wrekin	Arleston	587	10.7	390	7.1	197	3.6
	Malinslee	928	15.4	696	11.6	232	3.9
	Newdale	216	11.0	159	8.1	57	2.9
	Wellington	667	8.4	395	5.0	272	3.4
	Total	2,398	11.2	1,640	7.6	758	3.5
Borough total		7,810	11.7	5,394	8.1	2,416	3.6
West Midlands total		-	11.1	-	7.5	-	3.6
England total		-	11.6	-	7.1	-	4.5

Source: [2011 Census](#)

What is this data telling us?

- Telford and Wrekin have a higher rate of lone parents with dependent children (8.1%) than the West Midlands (7.5%) and England (7.1%). This equates to around 5,394 households
- There are a further 2,416 lone parent households where all the children are non-dependent
- Five SureStart Children Centres have rates of lone parent households with dependent children that are higher than the borough rate: Woodside (14.7%, 531 households), Brookside (12.5%, 335 households), Malinslee (11.6%, 696 households), Hadley (10.1%, 443 households) and Sutton Hill (8.4%, 393 households)
- The Lakeside South area has the highest rate of lone parents with dependent children at 10.3% or 1,711 households
- Newport and Wellington have the lowest rates of lone parent households with dependent children (4.8% and 5.0% respectively)

BEING HEALTHY

Smoking at the time of Delivery

Table 3.1: Smoking at the time of delivery

Children & Family Area	SureStart Children Centre	% 2011/12
Hadley Castle	Donnington	22.3%
	Hadley	20.9%
	Newport	13.1%
	Oakengates	28.7%
	St Georges	15.7%
Lakeside South	Brookside	37.6%
	Dawley	18.9%
	Sutton Hill	34.2%
	Woodside	32.5%
The Wrekin	Arleston	17.3%
	Malinslee	28.3%
	Newdale	15.2%
	Wellington	7.9%
Borough average		22.7%
Borough number		524
National Average		13.2%

Sources: The Health and Social Care Information Centre, Lifestyle Statistics / Omnibus, Copyright ©2012. [The Health and Social Care Information Centre](#), Lifestyle Statistics.

What is this data telling us?

- Maternal smoking rates in pregnancy (as measured by smoking at time of delivery) have been significantly worse than the national average in Telford and Wrekin during the past decade.
- During 2011/12, 22.7% of mothers were smokers at the time of delivery (524 women), compared to 13.2% of mothers in England
- 8 out of 13 Children Centre areas have significantly higher rates of smoking at time of delivery than the national average
- 8 out of 33 wards have rates that are over double the national average rate.
- 38% of women under 20 years of age were smokers when their baby was born
- 55% of mothers from the 40% most deprived local communities were smokers at the time of their delivery, compared to 9.4% of mothers from the 40% most affluent areas.
- The highest rates of smoking in pregnancy nationally are teenage mothers. Given the high percentage of teenage mothers in Telford and Wrekin, this factor may contribute to the poor rate of reduction in smoking during pregnancy

Teenage Pregnancy

Table 3.2: Teenage conception rate and Teenage Mothers

	Teenage Conception Rate (aged under 18)		Teenage Mothers (aged under 18)	
	Number	Rate	Number	Rate
Telford & Wrekin	155	47.5	45	2.0
National Average	-	35.4	-	1.3

Source – Conceptions: under 18 conception rate per 1,000 females age 15-17 years, 2010. Teenage Mothers: % of delivery episodes where the mother is aged less than 18 years, 2011/12. [ChiMat Child Health Profile 2013](#)

Table 3.3: Teenage Pregnancy by ward (age under 18) 2008-2010

Apley Castle	*	Lawley & Overdale	
Arleston		Madeley	
Brookside		Malinslee	
Church Aston & Lilleshall	*	Muxton	
College		Newport East	
Cuckoo Oak		Newport North	
Dawley Magna		Newport South	*
Donnington		Newport West	*
Dothill		Park	*
Edgmond	*	Priorslee	
Ercall		Shawbirch	
Ercall Magna		St. Georges	
Hadley and Leegomery		The Nedge	
Haygate		Woodside	
Horsehay		Wrockwardine	
Ironbridge Gorge		Wrockwardine Wood	
Ketley & Oakengates		Telford & Wrekin	47.5

Significantly higher than the National Average

Statistically similar to the National Average

Significantly lower than the National Average

* = Surpressed

Source – [East Midlands Public Health Observatory](#) ward-level teenage pregnancy mapping tool 2013

What is this data telling us?

- The number of females under the age of 18 conceiving in Telford and Wrekin is significantly higher than the national rate
- The number of teenage mothers in Telford and Wrekin is also significantly higher than the national rate
- At ward level we are able to indicate whether the teenage pregnancy rate is significantly different from the national rate. 5 wards in the borough have rates significantly higher: Brookside, Dawley Magna, Donnington, Madeley and Woodside.

Breastfeeding Initiation

Table 3.4: % Mothers initiating Breastfeeding

Children & Family Area	SureStart Children Centre	2010/11	2011/12
Hadley Castle	Donnington	60.1%	63.4%
	Hadley	63.6%	62.2%
	Newport	83.0%	87.0%
	Oakengates	63.0%	61.5%
	St Georges	65.8%	68.8%
Lakeside South	Brookside	55.8%	54.1%
	Dawley	70.2%	68.9%
	Sutton Hill	57.2%	51.7%
	Woodside	50.0%	55.4%
The Wrekin	Arleston	66.9%	71.4%
	Malinslee	58.3%	62.8%
	Newdale	72.5%	76.1%
	Wellington	83.2%	76.8%
Borough Average			66.2%
National Average			74.0%

Source: The Health and Social Care Information Centre, Lifestyle statistics / Omnibus, Copyright ©2012. [The Health and Social Care Information Centre](#), Lifestyle Statistics. All rights reserved and the Maternity Services Unit, Shrewsbury and Telford Hospitals

What is this data telling us?

- Breastfeeding rates in Telford and Wrekin remained significantly worse than the national average in 2011/12. Overall 66% of infants were breastfed at birth in Telford and Wrekin compared to 74% nationally
- Breastfeeding rates are significantly lower in: Younger mothers, with 42% of teenage mothers breastfeeding at birth compared to 72% of mothers aged 35 and over; Deprived communities, with 51% of infants breastfed at birth in the most deprived areas of Telford and Wrekin, compared to 81% in the more affluent areas
- The breastfeeding initiation is lowest in the Cuckoo Oak and Woodside wards (45.4% and 49.3% respectively). Two wards, Ironbridge Gorge and Ercall achieved 100% breastfeeding initiation.
- Newport Children's Centre has a statistically significantly higher rate of breastfeeding initiation than the national average. Newdale and Wellington Children Centres also have a higher rates, however, statistically they are similar to the national average.
- Variations in breastfeeding initiation according to ethnicity have been identified over a number of years with the highest levels to be found amongst Indian, Pakistani and Black African mothers compared with lower levels in Black Caribbean and Chinese mothers

Breastfeeding at 6-8 Weeks

Table 3.5: % Mothers breastfeeding at 6 to 8 weeks

Children & Family Area	SureStart Children Centre	2010/11	2011/12
Hadley Castle	Donnington	27.4%	33.3%
	Hadley	34.4%	36.3%
	Newport	47.7%	45.8%
	Oakengates	30.7%	22.9%
	St Georges	41.5%	35.0%
Lakeside South	Brookside	22.0%	22.0%
	Dawley	34.3%	28.4%
	Sutton Hill	24.5%	25.9%
	Woodside	21.4%	22.4%
The Wrekin	Arleston	34.5%	36.4%
	Malinslee	30.9%	31.2%
	Newdale	36.9%	38.5%
	Wellington	48.3%	43.9%
Borough average			32.9%
National Average			47.2%

Source: The Health and Social Care Information Centre, Lifestyle Statistics/Omnibus, Copyright ©2012. [The Health and Social Care Information Centre](#), Lifestyle Statistics. All rights reserved and Shropshire Community NHS Trust, Child Health Information Services

What is this data telling us?

- 33% of infants in Telford and Wrekin were breastfed at 6-8 weeks, compared to 47% nationally.
- 10 out of the 13 SureStart Children Centres have significantly lower rates of breastfeeding at 6-8 weeks than the national average
- Drop off rates (i.e. breastfeeding to bottle) from birth to the 6-8 week check were significantly higher (50.3%) than the national average (36.2%) in 2011/12.

Immunisation and Vaccinations

Table 3.6: Immunisation rates for Telford & Wrekin 2011/12

	Children immunised by their 1st birthday	Children immunised by their 2nd birthday			Children immunised by their 5th birthday	
	Dtap/IPV/Hib*	PCV	MMR1	Hib/MenC	DTaP/IPV Booster	MMR2
Telford & Wrekin Rate	96.7%	96.6%	96.5%	96.1%	94.1%	91.8%
England average	94.7%	91.5%	91.2%	92.3%	87.4%	86.0%

Source: COVER Copyright © 2012, [Health and Social Care Information Centre](#), Screening and Immunisation Statistics. All rights reserved* DTaP/IPV/Hib equals Diphtheria, Tetanus, Polio, Whooping Cough and Haemophilus influenza. MMR is the Mumps, Measles and Rubella vaccination. PCV is Pneumococcal Conjugate vaccine. Hib/MenC includes both the Haemophilus Influenza type b and Meningitis C vaccine.

What is this data telling us?

- Telford and Wrekin rates for immunisation across the Borough has improved over recent years and the outturn for 2011/12 exceeded the England average for all immunisations
- Telford and Wrekin rates in the last year have also exceeded the WHO (World Health Organisation) targets in all but one immunisation (DTaP/IPV Booster at 5 years)
- In Telford and Wrekin, MMR coverage at both 2 years and 5 years has exceeded the England average since 2005/06; in 2011/12, MMR coverage at 2 years and 5 years exceeded the World Health Organisation target of 95% and 90% respectively

Obesity

Table 3.7: National Child Measurement Programme – 2008/09 to 2010/11 (3-year rolling average)

Children & Family Area	SureStart Children Centre	MSOA Area*	% obese in Reception year (4-5 year olds)	% obese in Year 6 year (10-11 year olds)
Hadley Castle	Donnington	Donnington and Muxton	16.3%	14.3%
		Muxton	11.7%	16.1%
		Wrockwardine Wood and Trench	10.9%	23.5%
	Hadley	Hadley and Leegomery (West)	17.4%	22.4%
		Hadley and Leegomery (East)	11.7%	18.3%
	Newport	Church Aston and Lilleshall (South)	11.7%	16.1%
		Church Aston and Lilleshall (North) and Edgmond	9.3%	15.4%
		Newport East and North	7.6%	14.3%
		Newport South and West	12.1%	11.7%
	Oakengates	Ketley and Oakengates	13.4%	22.8%
	St Georges	Priorslee	7.7%	15.7%
		St Georges	12.4%	20.7%
Lakeside South	Brookside	Brookside	12.3%	20.4%
	Dawley	Dawley Magna (South)	9.8%	23.4%
		Dawley Magna (North)	12.0%	21.6%
		Horsehay and Lightmoor	6.5%	12.8%
	Sutton Hill	Cuckoo Oak	12.2%	21.5%
		Madeley	9.9%	16.4%
	Woodside	Ironbridge Gorge	6.5%	11.2%
		Woodside	13.2%	19.0%
The Wrekin	Arleston	Arleston and College	12.0%	21.9%
		Ercall and Haygate	9.6%	25.7%
	Malinslee	Malinslee	12.0%	21.6%
		The Nedge	7.0%	19.5%
	Newdale	Lawley & Overdale	6.5%	12.8%
	Wellington	Apley Castle	17.4%	22.4%
		Dothill	9.5%	19.9%
		Ercall Magna (East)	9.3%	15.4%
		Ercall Magna (West) and Wrockwardine	6.5%	11.2%
		Park and Shawbirch	9.5%	19.9%
Borough Average			10.9%	19.0%
England Average			9.6%	18.7%

Note MSOA equals Middle Super Output Area. MSOAs are geographical areas of consistent size with similar social characteristics and an average population of 7,200, they can include parts of wards as well as full wards.

Sources: National Child Measurement Programme, [NHS Information Centre](#) for health and social care and the [Association of Public Health Observatories](#)

What is this data telling us?

- The information given in the table above highlights the areas where obesity rates at MSOA* and SureStart Children Centre level are significantly higher or lower than the national average
- The levels Obesity among the 4-5 year olds in Telford and Wrekin has decreased during the last 6 years from 12.5% in 2006/09 to 10.7% in 2011/12. Telford and Wrekin rates for 2011/12 10.7% are similar to the national average 9.5%
- Obesity among the 10-11 year olds is currently 20.6% (2011/12) and is similar to the national average 19.2%
- More boys than girls are obese in the 4-5 and 10-11 year age group
- For the period 2008/09 to 2010/11 there were 539 reception children and 968 year 6 children classified as obese

STAYING SAFE

Emergency Admissions for injury to children and young people

Table 4.1: Admissions for the period April 2006 to March 2011 (inclusive) (5-year rolling average) – crude rate per 100,000 population 0-17

Children & Family Area	SureStart Children Centre	MSOA Area*	Rate per 100,000 population 0-17
Hadley Castle	Donnington	Donnington and Muxton	1,139.2
		Muxton	1,096.1
		Wrockwardine Wood and Trench	1,067.6
	Hadley	Hadley and Leegomery (West)	1,250.0
		Hadley and Leegomery (East)	1,449.9
	Newport	Church Aston and Lilleshall (South)	1,096.1
		Church Aston and Lilleshall (North) and Edgmond	727.1
		Newport East and North	1,105.9
		Newport South and West	973.7
	Oakengates	Ketley and Oakengates	1,507.0
	St Georges	Priorslee	1,507.0
		St Georges	1,272.6
Lakeside South	Brookside	Brookside	1,282.6
	Dawley	Dawley Magna (South)	1,240.9
		Dawley Magna (North)	1,708.2
		Horsehay and Lightmoor	1,124.1
	Sutton Hill	Cuckoo Oak	1,683.2
		Madeley	1,048.0
	Woodside	Ironbridge Gorge	1,159.5
		Woodside	1,438.0
The Wrekin	Arleston	Arleston and College	1267.3
		Ercall and Haygate	1,465.1
	Malinslee	Malinslee	1,708.2
		The Nedge	1,223.9
	Newdale	Lawley & Overdale	1,124.1
	Wellington	Apley Castle	1,250.0
		Dothill	944.1
		Ercall Magna (East)	727.1
		Ercall Magna (West) and Wrockwardine	1159.5
Park and Shawbirch		944.1	

Note MSOA equals Middle Super Output Area. MSOAs are geographical areas of consistent size with similar social characteristics and an average population of 7,200, they can include parts of wards as

What is this data telling us?

- The emergency hospital admission rate due to injury in children under 18 was similar (i.e. not statistically significantly different) to the national average position for England during 2010/11
- Trends indicate that the emergency hospital admission rate due to injury in children under 18 years increased in 2009/10 but reduced again in 2010/11
- Although the overall hospital admission rate for injuries in all children under 18 was similar to the national rate in 2010/11, analyses of the rates by age group indicates a local issue in younger children:
 - The emergency hospital admission rate due to injury in children under 5 years old was statistically significantly worse than the national average during 2010/11
 - Hospital admission rates amongst children under 5 years for falls-related injuries were statistically significantly worse than the England average during 2010/11
- During 2008-10 the rate of children aged 0-15 years old who were killed or seriously injured through road traffic collisions was similar i.e. not statistically significantly different than the England average
- The mortality rate from accidents in aged 0-14 years old was similar i.e. not statistically significantly different than the national average during 2008-2010

Domestic Abuse

Table 4.2: Incidents of Domestic Abuse (01.10.11 to 30.09.12)

Children & Family Area	SureStart Children Centre	Crime		Incident	
		number	rate per 1,000 population	number	rate per 1,000 population
Hadley Castle	Donnington	102	5.0	345	16.8
	Hadley	21	1.9	72	6.4
	Newport	98	5.6	338	19.2
	Oakengates	85	8.8	251	25.9
	St Georges	57	4.3	159	11.9
	Total	363	5.0	1165	16.1
Lakeside South	Brookside	22	2.8	49	6.3
	Dawley	101	7.4	277	20.3
	Sutton Hill	32	2.8	101	8.8
	Woodside	61	6.3	170	17.5
	Total	216	5.1	597	14.0
The Wrekin	Arleston	67	5.4	150	12.0
	Malinslee	82	4.9	274	16.2
	Newdale	38	7.0	126	23.4
	Wellington	104	5.1	318	15.6
	Total	291	5.3	868	15.8
Borough rate		870	5.1	2,630	15.4

Source: West Mercia Police, Protecting Vulnerable People Team. Note that all incidents without an postcode have been excluded.

What is this data telling us?

- The crimes and incidents are identified as Domestic Abuse by the presence of a Domestic Abuse Interest Marker or Action Code, as recorded by West Mercia Police. Note that multiple crimes and/or incidents can occur at the same address
- 'Crimes' are all substantive chargeable offences. 'Incidents' are by definition 'no crimed' and are not chargeable, i.e. where an incident has occurred but does not quite meet the threshold for charging. Reported crimes and incidents are only a small proportion of those committed
- The SureStart Children Centre areas with the highest proportion of domestic abuse crimes is Oakengates (8.8 per 1,000 pop) and the lowest is Hadley (1.9 per 1,000 pop)

Children subject of a Child Protection Plan

Table 4.3: Children subject of a child protection plan as at 31st March 2012

Children & Family Area	SureStart Children Centre	Children aged 0-5		Children all ages	
		Number (range)	rate per 1,000 population (0-5)	Number (range)	rate per 1,000 population (0-19)
Hadley Castle	Donnington	6-10		20-25	
	Hadley	6-10		16-20	
	Newport	0-5		6-10	
	Oakengates	0-5		0-5	
	St Georges	0-5		6-10	
	Total	26-30	5	60-65	3
Lakeside South	Brookside	6-10		11-15	
	Dawley	6-10		6-10	
	Sutton Hill	16-20		40-45	
	Woodside	11-15		20-25	
	Total	40-45	11	80-85	7
The Wrekin	Arleston	6-10		20-25	
	Malinslee	16-20		20-25	
	Newdale	6-10		16-20	
	Wellington	0-5		6-10	
	Total	30-35	8	70-75	5
Borough rate		109	8	221	5

Source: Telford & Wrekin Council Safeguarding Business Support and Information Team. Note rates have been rounded to whole numbers and numbers grouped into bandings to follow suppression rules

What is this data telling us?

- Lakeside South area has the highest rate of children aged 0-5 and of children of all ages who are subject to a child protection plan
- The SureStart Children Centre Areas with the highest number of children aged 0-5 subject to a child protection plan on 31st March 2012 were Sutton Hill and Malinslee, both with 16-20 children. The highest number of children overall is in Sutton Hill with 40-45 children

Children in Care

Table 4.4: Children in Care as at 09/01/13

Children & Family Area		Children aged 0-5		aged 6-19	
		Primary Address	Placement Address	Primary Address	Placement Address
Hadley Castle	Number of Children	33	13	72	56
	rate per 1,000*	6.0	2.4	13.0	10.1
Lakeside South	Number of Children	37	13	83	37
	rate per 1,000*	9.6	3.4	21.6	9.6
The Wrekin	Number of Children	16	16	72	24
	rate per 1,000*	3.7	3.7	16.9	5.6
Number of children: Address Undisclosed		<5	0	<5	0
Number of children: Placed Out of Area		0	47	0	114

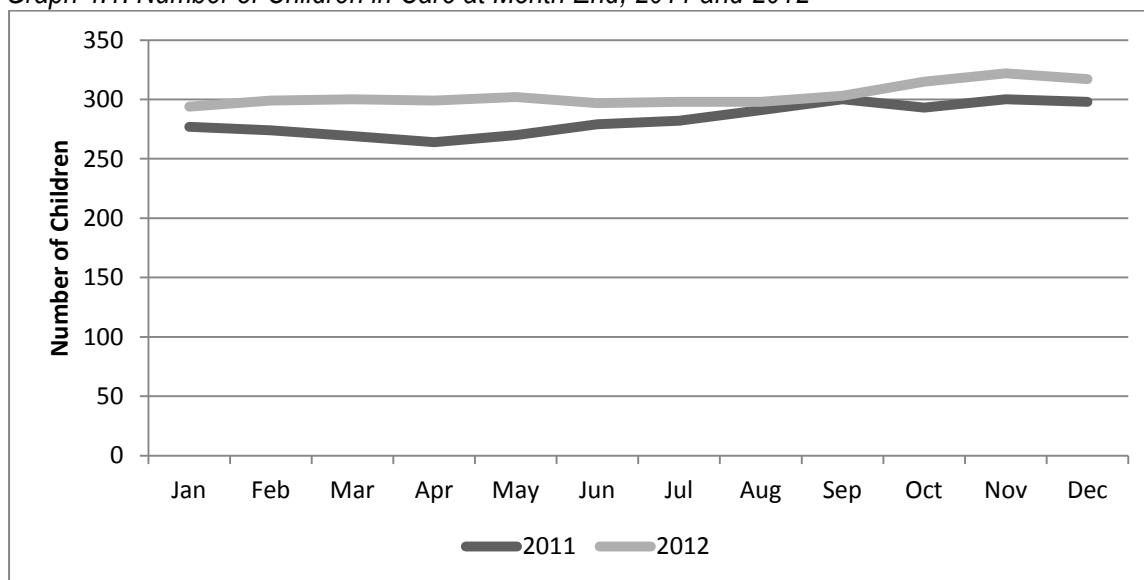
Source: Telford & Wrekin, Safeguarding Business Support and Information Team *rate is rate per 1,000 children aged 0-5 within the locality.

Table 4.5: Children in Care at Month End

	Jan	Feb	Mar	Apr	May	Jun	Jul	Aug	Sep	Oct	Nov	Dec	Average
2011	277	274	269	264	270	279	282	291	300	293	300	298	283
2012	294	299	300	299	302	297	298	298	303	315	322	317	304

Source: Telford & Wrekin Safeguarding Business Support and Information Team

Graph 4.1: Number of Children in Care at Month End, 2011 and 2012



Source: Telford & Wrekin, Safeguarding

Table 4.6: Number of New Children in Care Episodes by Age Group 2010 to 2012

	Age of Child					Total
	0 to 1	1 to 4	5 to 9	10 to 15	Over 16	
2010	30	21	16	41	5	113
2011	33	35	35	37	3	143
2012	30	27	21	39	4	121

Source: Telford & Wrekin, Safeguarding Business Support and Information Team

What is this data telling us?

- Lakeside South area has the highest rate of children aged 0-5 whose primary address is in Lakeside South who are in care (9.6 per 1,000 population aged 0-5)
- Just over half of children in care aged 0 to 5 from the borough are placed outside the borough (47 children or 52.8%)
- On average, there were 21 more children in care at the end of each month in 2012 compared to 2011

Households in Temporary Accommodation

Table 4.7: Households in temporary accommodation as at 31/3/12

Children & Family Area	Total households		Households with dependent children*	
	Number	rate per 1,000 households	Number	rate per 1,000 households
<i>Hadley Castle</i>	23	0.8	13	0.5
<i>Lakeside South</i>	26	1.6	20	1.2
<i>The Wrekin</i>	17	0.8	8	0.4
total	66		41	

Source: Telford and Wrekin Council Housing Needs Team *Includes pregnant females with no other dependants.

What is this data telling us?

- This data shows the number of households placed in temporary accommodation by the Local Authority Housing Needs team as at 31/3/12, by the address of the temporary accommodation
- Of the 66 households in temporary accommodation, 41 of these (62.1%) contained dependent children
- Lakeside South Children & Family area has the highest proportion of households in temporary accommodation at 1.6 per 1,000 households, with 1.2 per 1,000 having dependent children

ENJOYING AND ACHIEVING

Early Years Foundation Stage Attainment

Table 5.1: Early Years Foundation Stage Attainment of schools within each area

Children & Family Area	SureStart Children Centre	% children achieving at least 78 points across the EYFSP and scored at least 6 in CLL & PSE			% gap between lowest achieving 20% in EYFSP and the rest		
		2009/10	2010/11	2011/12	2009/10	2010/11	2011/12
Hadley Castle	Donnington	54.4	54.2	55	29.4	29.7	32.4
	Hadley	44.4	30.6	49.5	29.6	27.2	31.7
	Newport	64.5	63.9	70.4	27.5	23.5	18.8
	Oakengates	43	50.6	50.5	17.3	27.4	17.0
	St Georges	51.4	54.1	63.4	37.3	27.9	21.4
	Total	54.0	55.4	59.7	-	-	-
Lakeside South	Brookside	66.3	53.8	62.8	30.7	30.8	28.5
	Dawley	60.9	53.9	61.6	26.8	24.9	29.8
	Sutton Hill	52	46.6	57.4	25.6	27.6	29.3
	Woodside	46.3	59.1	55.2	31.4	15.5	30.6
	Total	57.1	53.4	59.0	-	-	-
The Wrekin	Arleston	18.3	24.6	13	33.8	27.7	25.1
	Malinslee	46.3	43.3	44.5	34.1	29.3	28.8
	Newdale	47.7	53.5	57.7	16.3	21.3	30.8
	Wellington	62.8	56.4	59.4	25.7	25	27.6
	Total	50.0	48.2	48.8	-	-	-
	Telford & Wrekin	52.5	52	54.9	32.4	29.2	31.2
	England Avg.	56	59	64	32.7	31.4	30.1

Source – Telford and Wrekin Council. EYFS = Early Years Foundation Stage, CLL = Communication, Language & Literacy, PSE = Personal, Social & Emotional development

What is this data telling us?

- Attainment of young people completing EYFS across the borough is improving (52.5% in 09/10 to 54.9% in 11/12) but remains below the England average for 2011/12 (64.0%)
- Attainment of 78 points (incl. 6+ in CLL / PSE) was highest at schools in the Newport SureStart Children Centre area (70.4%). Schools in the SureStart Children Centre areas of Arleston, Malinslee, Oakengates and Hadley achieved less than the borough average (13.0%, 44.5%, 50.5%, 49.5%, borough 54.9%)
- The ‘% gap between lowest achieving 20% in EYFSP and the rest’ measures the gap between the lowest achieving 20% of children and the median. This shows the spread of the results and should be used to create a picture of attainment alongside the overall attainment levels – generally, a smaller percentage can show a positive (in Newport the % gap is low at 18.8% and overall attainment is high), however a low or reducing gap can also reflect a reducing median (in Arleston, for example)

Year 1 Phonics

Table 5.2: Phonics attainment 2012

Children & Family Area	SureStart Children Centre	% of children achieving Expected level in Phonics
Hadley Castle	Donnington	55.9%
	Hadley	42.2%
	Newport	54.2%
	Oakengates	50.6%
	St Georges	47.8%
	Total	50.8%
Lakeside South	Brookside	52.4%
	Dawley	51.4%
	Sutton Hill	56.4%
	Woodside	57.4%
	Total	54.5%
The Wrekin	Arleston	55.3%
	Malinslee	43.1%
	Newdale	54.2%
	Wellington	57.1%
	Total	51.4%
Telford & Wrekin		51%
England Avg.		58%

Source: Telford & Wrekin Council

What is this data telling us?

- 2012 was the first year that children undertook a Phonics assessment at the end of Year 1
- None of the Children & Family areas or SureStart Children Centre areas exceeded the England Average rate (58%)
- The highest attainment in the Phonics assessment was in Lakeside South Children & Family area, with the Woodside SureStart Children Centre area achieving the highest rate (57.4%)
- The lowest attainment in the Phonics assessment was in Hadley SureStart Children Centre area (42.2%)

Key Stage 1 Attainment

Table 5.3: Key Stage 1 Attainment 2012

Children & Family Area	SureStart Children Centre	% of children achieving L2+ in 2012			
		Maths	Reading	Writing	Speaking and Listening
Hadley Castle	Donnington	92.9	89.4	85.8	91.1
	Hadley	84.3	81.0	77.8	75.8
	Newport	94.6	91.2	91.9	93.2
	Oakengates	85.9	80.8	73.7	85.9
	St Georges	85.3	84.2	76.8	88.4
	Total	89.7	86.4	82.8	87.5
Lakeside South	Brookside	88.7	84.9	84.0	87.7
	Dawley	89.9	83.2	80.5	85.9
	Sutton Hill	90.7	80.6	75.9	86.1
	Woodside	91.3	81.1	78.0	87.4
	Total	90.2	82.4	79.6	86.7
The Wrekin	Arleston	87.2	87.2	80.1	84.0
	Malinslee	89.4	82.6	77.8	79.7
	Newdale	91.0	87.2	84.6	87.2
	Wellington	92.2	91.2	86.0	92.2
	Total	89.9	86.9	81.7	85.5
Telford & Wrekin		89.0	85.0	81.0	86.0
England Avg.		91.0	87.0	83.0	88.0

Source – Telford and Wrekin Council

What is this data telling us?

- At the end of Key Stage 1 children are assessed as to whether they achieve Level 2+ in Maths, Reading, Writing and Speaking & Listening
- The highest percentage of children achieving Level 2+ in all subjects was Newport (with Wellington achieving the same percentage for Reading)
- By SureStart Children Centre, the lowest percentage of pupils achieving Level 2+ in Maths was Hadley (84.3%), in Reading was Sutton Hill (80.6%), in Writing was Oakengates (73.7%) and in Speaking & Listening was Hadley (75.8%)

Key Stage 2 Attainment

Table 5.4: Key Stage 2 Attainment 2011 and 2012

Children & Family Area	SureStart Children Centre	% of children achieving L4+ in English and Maths	
		2011	2012
Hadley Castle	Donnington	80.2%	83.2%
	Hadley	59.0%	69.5%
	Newport	83.9%	89.9%
	Oakengates	67.9%	76.1%
	St Georges	83.8%	86.4%
	Total	75.4%	81.9%
Lakeside South	Brookside	74.3%	86.3%
	Dawley	77.4%	62.9%
	Sutton Hill	73.0%	76.9%
	Woodside	67.4%	76.6%
	Total	73.0%	74.5%
The Wrekin	Arleston	52.9%	71.0%
	Malinslee	63.9%	70.6%
	Newdale	78.5%	67.9%
	Wellington	78.5%	86.5%
	Total	68.3%	76.3%
Telford & Wrekin		74.0%	80%
England Avg.		74.0%	80%

Source: Telford & Wrekin Council

What is this data telling us?

- At Key Stage 2 the number of children achieving Level 4+ is measured
- Attainment at a national and borough level increased between 2011 and 2012. At SureStart Children Centres attainment at Key Stage 2 increased in all areas but Newdale and Dawley
- In 2012 the highest attainment rate at Key Stage 2 was in Newport (89.9%) and the lowest was Dawley (62.9%)

ECONOMIC WELLBEING

Deprivation

Table 6.1: Estimated number of Children Aged 0 to 5 living in neighbourhoods ranked in the 30% most deprived neighbourhoods (IMD) in England by Children's Centre as at 31.08.12

Children & Family Area	SureStart Children Centre	Estimated number of children aged 0-5 living in the 30% most deprived areas of the country (using Index of Multiple Deprivation)	
		number	%
Hadley Castle	Donnington	730	43.0%
	Hadley	950	79.5%
	Newport	0	0.0%
	Oakengates	470	66.8%
	St Georges	110	11.0%
	Total	2,260	40.9%
Lakeside South	Brookside	430	57.3%
	Dawley	300	24.4%
	Sutton Hill	650	77.2%
	Woodside	880	86.0%
	Total	2,260	58.8%
The Wrekin	Arleston	670	65.3%
	Malinslee	1,190	75.1%
	Newdale	270	53.2%
	Wellington	50	4.3%
	Total	2,180	51.0%
Borough total		6,700	49.1%

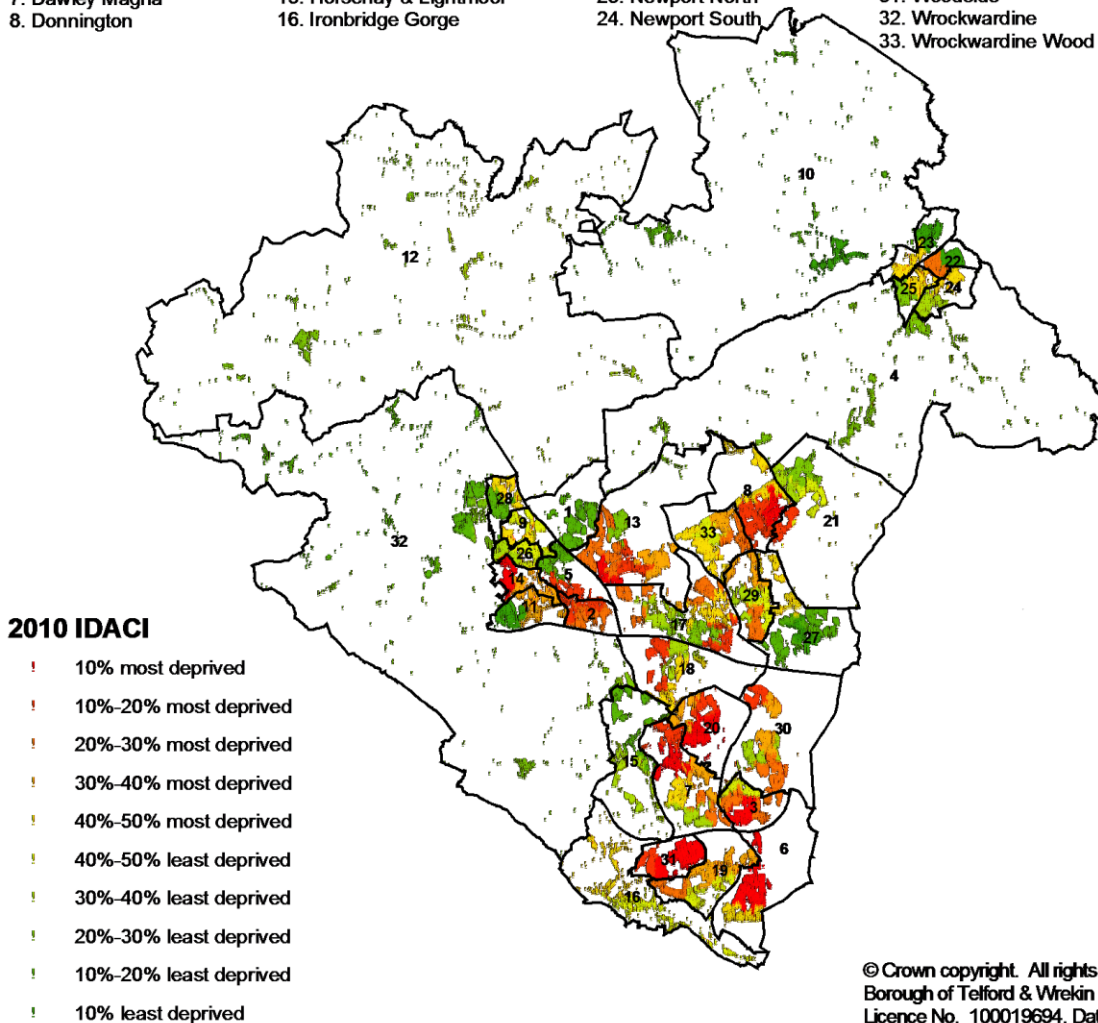
Source – T&W GP Patient Register 2012, [Deprivation IMD](#) IDACI domain. All numbers have been independently rounded to the nearest 10

What is this data telling us?

- Telford and Wrekin is in the top 30% most deprived Local Authorities in the West Midlands and the top 40% most deprived nationally
- Across Telford and Wrekin there are pockets of nationally significant deprivation but also of affluence (see map overleaf). More deprived areas are typically concentrated in the urban areas of the borough, often around new town estates
- Almost half (49.1%) of the borough's 0-5 population live in areas ranked in the 30% most deprived nationally
- The four children's centres with the highest proportion of their 0-5 population living in areas ranked in the 30% most deprived nationally are Woodside (86.0%), Hadley (79.5%), Sutton Hill (77.2%) and Malinslee (75.1%). Conversely, none of the children aged 0-5 who live in the Newport SureStart Children Centre area live in the 30% most deprived areas

Map 6.1: : Income deprivation affecting children 2010 – Super Output Areas in Telford and Wrekin (overlaid with ward boundaries)

- | | | | |
|------------------------------|--------------------------|-------------------------|--------------------------------|
| 1. Apley Castle | 9. Dothill | 17. Ketley & Oakengates | 25. Newport West |
| 2. Arleston | 10. Edgmond | 18. Lawley & Overdale | 26. Park |
| 3. Brookside | 11. Ercall | 19. Madeley | 27. Priorslee |
| 4. Church Aston & Lilleshall | 12. Ercall Magna | 20. Malinslee | 28. Shawbirch |
| 5. College | 13. Hadley & Leegomery | 21. Muxton | 29. St. Georges |
| 6. Cuckoo Oak | 14. Haygate | 22. Newport East | 30. The Nedge |
| 7. Dawley Magna | 15. Horsehay & Lightmoor | 23. Newport North | 31. Woodside |
| 8. Donnington | 16. Ironbridge Gorge | 24. Newport South | 32. Wrockwardine |
| | | | 33. Wrockwardine Wood & Trench |



2010 IDACI

- ! 10% most deprived
- ! 10%-20% most deprived
- ! 20%-30% most deprived
- ! 30%-40% most deprived
- ! 40%-50% most deprived
- ! 40%-50% least deprived
- ! 30%-40% least deprived
- ! 20%-30% least deprived
- ! 10%-20% least deprived
- ! 10% least deprived

© Crown copyright. All rights reserved.
 Borough of Telford & Wrekin
 Licence No. 100019694. Date. 2011

Source: [Telford and Wrekin Index of Multiple Deprivation Report 2010](#)

Job Seekers' Allowance Claimants

Table 6.2: Number of People Claiming Job Seekers Allowance by Locality

Children & Family Area	SureStart Children Centre	Claiming JSA			
		number	%	male	female
Hadley Castle	Donnington	500	3.9%	314	186
	Hadley	337	4.7%	206	131
	Newport	180	1.6%	119	61
	Oakengates	259	4.4%	167	92
	St Georges	249	2.9%	157	92
	Total	1,525	3.4%	963	562
Lakeside South	Brookside	307	6.1%	194	113
	Dawley	356	4.1%	195	161
	Sutton Hill	444	6.3%	296	148
	Woodside	420	6.9%	265	155
	Total	1,527	5.7%	950	577
The Wrekin	Arleston	374	5.0%	231	143
	Malinslee	586	5.4%	374	212
	Newdale	149	4.3%	97	52
	Wellington	234	1.8%	154	75
	Total	1,343	3.9%	856	482
Borough rate		4,395	4.2%	2,769	1621
West Midlands rate		-	4.6%	-	-
National rate		-	3.8%	-	-

Source: [ONS claimant count November 2012](#) Note: rates by children's centre use the T&W population model estimated population 18-64, therefore a slightly different denominator to the borough and national rates.

What is this data telling us?

- The numbers of people claiming Job Seekers' Allowance (JSA) is often used as an indication of unemployment levels as it is available at a much more detailed level than overall (modelled) unemployment rates (however, it should be noted that overall unemployment is higher)
- The number of people claiming JSA in Telford and Wrekin (4.2%) is higher than the national rate (3.8%) but lower than regionally (4.6%)
- The three SureStart Children Centre areas with the highest proportion of working age adults claiming JSA are Woodside (6.9%), Sutton Hill (6.3%) and Brookside (6.1%), all of which are in the Lakeside South area
- Newport and Wellington SureStart Children Centres have the lowest proportion of working age adults claiming JSA (1.6% and 1.8% respectively)

Young People Claiming Job Seekers' Allowance

Table 6.3: Young People aged 16-24 claiming JSAs as a proportion of all people aged 16-24

Children & Family Area	SureStart Children Centre	JSA claimants aged 16-24	
		number	%
Hadley Castle	Donnington	165	7.4%
	Hadley	105	7.6%
	Newport	45	1.5%
	Oakengates	95	9.0%
	St Georges	65	4.6%
	Total	475	5.2%
Lakeside South	Brookside	115	12.6%
	Dawley	115	7.0%
	Sutton Hill	130	10.8%
	Woodside	140	12.2%
	Total	500	10.2%
The Wrekin	Arleston	115	9.3%
	Malinslee	205	10.6%
	Newdale	45	7.1%
	Wellington	90	3.9%
	Total	455	7.4%
Borough		1430	7.1%
National		-	5.7%

Source: ONS Claimant Count March 2013, population aged 16-24 from the [2011 Census](#)

What is this data telling us?

- The numbers of people claiming Job Seekers' Allowance (JSA) is often used as an indication of unemployment levels as it is available at a much more detailed level than overall (modelled) unemployment rates (however, it should be noted that overall unemployment is higher)
- The number of people aged 16-24 in Telford and Wrekin claiming JSA is higher than the national rate (7.1% compared to 5.7%)
- The SureStart Children Centre areas with the highest proportion of people aged 16-24 claiming JSA are Brookside (12.6%), Woodside (12.2%), Sutton Hill (10.8%) and Malinslee (10.6%). The top three are all located in the Lakeside South Children and Families area
- The area with the lowest rate of people 16-24 claiming JSA is Newport, although this is in part due to the high population in that area aged 16-24 from Harper Adams University.

People Aged 16-19 Not in Education, Employment or Training (NEETS)

Table 6.4: Not in education, employment or training (aged 16-19)

Children & Family Area	SureStart Children Centre	NEET aged 16-19	
		number	%
Hadley Castle	Donnington	55	5.2%
	Hadley	29	4.7%
	Newport	15	1.1%
	Oakengates	24	5.2%
	St Georges	21	3.2%
	Total	144	3.4%
Lakeside South	Brookside	22	5.4%
	Dawley	32	4.8%
	Sutton Hill	44	8.4%
	Woodside	53	9.2%
	Total	151	6.9%
The Wrekin	Arleston	47	6.9%
	Malinslee	56	6.3%
	Newdale	12	4.1%
	Wellington	32	3.1%
	Total	147	5.1%
Borough		442	4.8%

Source: Telford and Wrekin Council, March 2013

What is this data telling us?

- NEET is a measure of those young people aged 16-19 who are not in education, employment or training
- The NEET rate is highest in the Lakeside South Children and Family area, with 6.9% of 16-19 year olds in the area not in education, employment or training
- Lakeside South also contains the two SureStart Children Centre areas with the highest NEET rate, Woodside (9.2%) and Sutton Hill (8.4%)
- The lowest rate of NEET is in Newport SureStart Children Centre area, although this is in part due to a high population aged 16-19 in that area at Harper Adams University

Number of Children in Out of Work Benefit Claimant Households

Table 6.3: Number of Children Living in Out of Work Benefit Claimant Households by Children's Centre and % of 0-4 year olds living in workless households as a percentage of children resident in each Children's Centre Area.

Children & Family Area	SureStart Children Centre	Age				total under 18 in workless households number	
		0-4		5 -10	11 - 15		16-18
		number	%	number	number		number
Hadley Castle	Donnington	375	26.5%	400	255	130	1160
	Hadley	285	28.5%	260	220	95	860
	Newport	85	10.7%	95	75	40	295
	Oakengates	195	32.9%	135	100	45	475
	St Georges	150	18.8%	120	100	55	425
	Total	1090	23.7%	1010	750	365	3215
Lakeside South	Brookside	265	42.0%	240	185	75	765
	Dawley	220	21.1%	195	140	60	615
	Sutton Hill	320	44.4%	240	195	65	820
	Woodside	430	50.5%	390	285	100	1205
	Total	1235	38.1%	1065	805	300	3405
The Wrekin	Arleston	215	25.0%	235	185	85	720
	Malinslee	230	17.4%	230	175	75	710
	Newdale	125	30.0%	125	75	30	355
	Wellington	110	11.8%	120	115	55	400
	Total	680	19.2%	710	550	245	2185
Borough Rate		3005	26.4%	2785	2105	980	8875

Source DWP May 2011

What is this data telling us?

- Workless households are households where no-one aged 16 or over is in employment. These members may be unemployed or inactive. Inactive members may be unavailable to work because of family commitments, retirement or study, or unable to work through sickness/disability
- Over a quarter (26.4%) of 0-4 year olds are estimated to live in workless households, around 3005 children in the Borough
- The rate of children aged 0-4 living in workless households in Telford and Wrekin is notably higher in the Lakeside South Children & Family area (38.1%), which contains the all three of the SureStart Children Centre areas with the highest percentage of 0-4 year olds living in workless households – Woodside (50.5%), Sutton Hill (44.4%) and Brookside (42.0%)
- The lowest rates of children aged 0-4 living in workless households are in the Newport and Wellington SureStart Children Centre areas (10.7% and 11.8% respectively)

Households claiming benefits (Housing or Council Tax) with Dependent children under 20

Table 6.4: Household Claiming Housing or Council Tax Benefits (as at 10/10/12)

Children & Family Area	SureStart Children Centre	total households in area	Households claiming housing or council tax benefit	
			Numbers	%
Hadley Castle	Donnington	7,990	891	11.2%
	Hadley	4,387	640	14.6%
	Newport	7,035	258	3.7%
	Oakengates	4,047	392	9.7%
	St Georges	4,970	317	6.4%
	Total	28,429	2,498	8.8%
Lakeside South	Brookside	2,671	528	19.8%
	Dawley	5,702	575	10.1%
	Sutton Hill	4,696	617	13.1%
	Woodside	3,604	831	23.1%
	Total	16,672	2,551	15.3%
The Wrekin	Arleston	5,512	589	10.7%
	Malinslee	6,024	1031	17.1%
	Newdale	1,964	223	11.4%
	Wellington	7,971	324	4.1%
	Total	21,469	2,167	10.1%
Borough Rate		66,571	7,216	10.8%

Source: Telford and Wrekin Council

What is this data telling us?

- 10.8% of households in Telford and Wrekin claim housing or Council Tax benefit.
- The highest claimant rates can be seen in Woodside (23.1%), Brookside (19.8%) and Malinslee (17.1%) SureStart Children Centre areas
- The lowest claimant rates can be seen in Newport (3.7%), Wellington (4.1%) and St Georges (6.4%)

Children Eligible for Free School Meals

Table 6.5: Children (school years Y1-Y11) Eligible for Free School Meals

Children & Family Area	SureStart Children Centre	Eligible for Free School Meals	
		Number	%
Hadley Castle	Donnington	522	20.4%
	Hadley	401	24.1%
	Newport	131	7.6%
	Oakengates	179	17.8%
	St Georges	145	14.9%
	Total	1378	35.4%
Lakeside South	Brookside	342	40.4%
	Dawley	265	19.9%
	Sutton Hill	256	32.2%
	Woodside	425	47.6%
	Total	1288	33.0%
The Wrekin	Arleston	365	23.1%
	Malinslee	579	31.2%
	Newdale	137	19.9%
	Wellington	151	6.6%
	Total	1232	31.6%
Grand Total		3898	21.4%

Source: Telford & Wrekin School Census January 2012

What is this data telling us?

- The number of children attending schools in each SureStart Children Centre area who claim Free School Meals (FSM) gives a further indication of the proportion of children living in families with lower incomes.
- The highest rates for the proportion of school children claiming FSM are all in Lakeside South – Woodside (47.6%), Brookside (40.4%) and Sutton Hill (32.2%) compared to the borough rate of 21.4%
- The SureStart Children Centre areas with the lowest rates of children claiming FSM are Wellington (6.6%) and Newport (7.6%)

Households in Fuel Poverty

Table 6.6: Households in fuel poverty 2010

Children & Family Area	SureStart Children Centre	Number of households in fuel poverty	
		number	%
Hadley Castle	Donnington	1446	18.0%
	Hadley	810	17.5%
	Newport	1206	17.1%
	Oakengates	763	18.6%
	St Georges	686	13.2%
	total	4,911	16.9%
Lakeside South	Brookside	395	14.6%
	Dawley	809	14.3%
	Sutton Hill	738	17.7%
	Woodside	688	19.1%
	total	2,630	16.3%
The Wrekin	Arleston	1164	20.6%
	Malinslee	1,008	16.8%
	Newdale	380	14.8%
	Wellington	1186	14.6%
	total	3,738	16.8%
Borough total		11,279	16.7%

Source: Department for Energy and Climate Change, released Jan 2013

What is this data telling us?

- A household is said to be fuel poor if it needs to spend more than 10 percent of its income on fuel to maintain an adequate standard of warmth
- Fuel poverty across the three Children & Family areas is similar, with all three close to the Borough rate.
- The four SureStart Children Centre areas showing the highest proportion of households in fuel poverty are Arleston (20.6%), Woodside (19.1%), Oakengates (18.6%) and Donnington (18.0%).

FURTHER INFORMATION

Source Data Notes

section	data	Source data and Notes
Population	Estimated Population aged 0-5 and Population by Gender	Various baselines are available to estimate the population of the borough. This report uses the T&W GP Patient register of resident population to estimate the number of children aged 0-5. The number of 0-year-olds was estimated up (due to the date of the report and the delay in people registering with their GP) to align closer with the birth rate for the year. Ages are calculated as at 31 st August 2012 to align to the OFSTED Children's Centre criteria for 'children'.
	Population Age 0-19	Source – Telford & Wrekin population model 2011 , ward based populations
	Ethnicity of school aged children	The school Census January 2012 has been used to give the best indicator of ethnicity in the younger population of the borough, which is known to be higher than that of the general population. Data is children from year 1 to year 11 (inclusive).
	Disabled children aged 0-5	Data in this table is an estimate of the numbers of children based on the prevalence rates in the Chimat Disability Needs Assessment 2012 rates for Telford & Wrekin: Rate for 0-4 year olds has been applied to the numbers in each area aged 0-5: Mild disability/long standing illness 0-4 M = 14%, F = 13%, Severe disability M = 12 per 10,000, F = 8 per 10,000.
	Ethnic Group – White: Gypsy or Irish Traveller and Lone Parent Households	Source – 2011 Census .
Being Healthy	Smoking at the Time of Delivery	Source = the health & social care information centre , Lifestyle Statistics 2012
	Teenage Pregnancy	Chimat Profile 2013 and East Midlands EMPHO ward level teenage pregnancy mapping tool
	Breastfeeding	Source = the health & social care information centre , Lifestyle Statistics 2012
	Immunisation and Vaccination	Source = the health & social care information centre , screening and immunisation statistics
	Obesity	Source = National Child Measurement Programme. Data has been reported at Middle Super Output Area (MSOA). These do not align directly to wards, but best-fit has been used to align to Children's centre areas
Staying Safe	Emergency Admissions	Source = Hospital Episode Statistics . Data has been reported at Middle Super Output Area (MSOA). These do not align directly to wards, but best-fit has been used to align to Children's centre areas
	Domestic Abuse	Source = West Mercia Police protecting Vulnerable People Team
	Children in Care and Child Protection – all tables	Source = Telford & Wrekin Council Safeguarding Business Support and Information Team, from the Protocol IT system.
	Households in Temporary Accommodation	Telford & Wrekin Council Academy System. Report produced by Delivery & Planning.
Enjoying and Achieving	All Attainment data	Source = Keyphas. Reports produced by Delivery & Planning. Alignment to areas is based on those schools within each SureStart Children Centre area as per table 1.1
Economic Wellbeing	Deprivation	Source = T&W GP Patient Register-based population estimates (used in 'Population' section) and the postcodes of the children have been cross referenced to the Index of Multiple Deprivation 2010, counting all children who live in the 30% most deprived areas nationally
	Job Seekers Allowance	Source – ONS Claimant count November 2012.
	NEETS	Source = Telford & Wrekin Council
	Workless Households	Department for Work & Pensions count, May 2011
	Households claiming benefits	Source = Telford & Wrekin Council count of households claiming either Housing or Council Tax benefits, as at 10/10/12
	Free School Meals	All children attending school as at the January 2012 Census. Alignment to SureStart Children Centre area is based on those schools within each area, as per table 1.1
	Households in fuel poverty	Sourced from the Department of Energy and Climate Change Sub Regional Fuel Poverty modelled estimates for 2010, released January 2013

Further information Sources

The Facts and figures website www.telford.gov.uk/factsandfigures provides more detailed information, data and intelligence about Telford and Wrekin. This includes:

- Population profiles
- Census data and profiles
- Ward profiles
- Economic Profile
- Education Profiles
- Health and Care data
- The Joint Strategic Needs Assessment Process

For more information on data, facts and figures contact the Delivery and Planning Team:

Telford & Wrekin Council
Addenbrooke House
Ironmasters Way
Telford
TF3 4NT

Tel: 01952 380131

Email: delivery&planning@telford.gov.uk

For more information on Children and Family Services contact the Family Connect Team:

Tel: 01952 385385

Email: familyconnect@telford.gov.uk

Website: <http://www.familyconnecttelford.co.uk>

Children & Young People Scrutiny Committee – 2012-14 work programme (working document)

Date of Meeting	Issue for Scrutiny	Type of Meeting	Who	Outcome/s
18 th April 2013	<ul style="list-style-type: none"> • Provision of primary places – terms of reference and position report • Ofsted report on fostering and action plan • Scrutiny report on children in care placement strategy 	Committee meeting	Cllr. Pau Watling Karen Perry Angela Yapp Jim Collins Kathy Swallow	<ul style="list-style-type: none"> • Report on school planning questioned and noted • Ofsted report questioned and noted • Recommendations endorsed
6 th June 2103	<ul style="list-style-type: none"> • Provision of Primary School Places • Terms of Reference 	Committee meeting	Heads of 2 Primary Schools (verbal)	
15 th August 2103	<ul style="list-style-type: none"> • Ofsted Action Plan: one year on • Update on CYP scrutiny recommendations in May report 			
23 rd September 2013	<ul style="list-style-type: none"> • Provision of Youth Services / YOS • 8 monthly report from IRO 			
26 November 2013	Provision of Youth Services / YOS			
27 January 2014	<ul style="list-style-type: none"> • Impact of early intervention services • Chair of LCSB report to CYP scrutiny 			
25 March 2014	<ul style="list-style-type: none"> • Impact of early intervention services • Annual report from IRO 			

Other items
2013-2014 Annual Adoption Service report – circulate when published
Standing item - CIC performance monitoring (Dashboard)
Standing item - Education attainment for the borough and for children in care