



Telford & Wrekin
C O U N C I L

Addenbrooke House Ironmasters Way Telford TF3 4NT

BOUNDARY REVIEW COMMITTEE

Date	Thursday, 29 September 2016	Time	6.00pm
Venue	Meeting Room G3/G4, Addenbrooke House, Ironmasters Way, Telford, TF3 4NT		

Enquiries Regarding this Agenda:

Democratic Services	Stacey Worthington	01952 382067
Media Enquiries	Corporate Communications	01952 382403
Lead Officer	Jonathan Eatough, Assistant Director: Governance, Procurement & Commissioning	01952 383200

Committee Membership: Councillors R J Sloan (**Chairman**), R A Overton (**Vice Chairman**), K T Blundell, N A Dugmore, A J Eade, I T W Fletcher, A D McClements and G C W Reynolds

AGENDA

1. **Apologies for Absence**
2. **Declarations of Interest**
3. **Minutes** Appendix A
To confirm the minutes of the meeting of the Boundary Review Committee held on 13 April 2016.
4. **Review Of Parliamentary Constituencies: Council Response** Appendix B
To consider the Boundary Commission for England's initial proposals for future parliamentary constituencies for the Borough.
5. **Date of Next Meeting**

Continued ...

BOUNDARY REVIEW COMMITTEE

Minutes of a meeting of the Boundary Review Committee held on Wednesday, 13 April 2016 at 6.00pm in Meeting Rooms G3/4, Addenbrooke House, Telford

Present: Councillors R J Sloan (Chairman), R A Overton (Vice Chairman), K T Blundell, N A Dugmore, A J Eade, I T W Fletcher, K R Guy, and G C W Reynolds

In Attendance: J Eatough (Assistant Director: Governance, Procurement & Commissioning), P Griffiths (Elections Specialist) and D Moseley (Democratic & Scrutiny Services Team Leader)

BRC-06 Apologies for Absence

None.

BRC-07 Declarations of Interest

None.

BRC-08 Minutes

Resolved – that the minutes of the meeting of the Boundary Review Committee held on 30 November 2015 be confirmed and signed by the Chairman

BRC-09 Phil Griffiths

The Chairman reported that this would be the last meeting to be attended by Phil Griffiths, who would be leaving the Council in June. He thanked him for all his work for the Council and particularly for the support he had provided to the Boundary Review Committee.

BRC-10 Parliamentary Boundary Review

The Elections Specialist gave a verbal update on the arrangements for the Review of Parliamentary Boundaries. He informed the Committee that the Boundary Commission expected to produce detailed guidance over the summer with the initial proposals for new boundaries published in the Autumn of 2016. In order to inform the proposals, the Boundary Commission would refer to the electorate numbers taken from the electoral register data supplied by each authority; these figures had been circulated as part of the agenda paperwork. At this stage it was unclear which authority areas would be included in the relevant sub-region but the Boundary Review was unfettered by political constraints and elector numbers would be a driving factor with the numbers for each constituency falling within 5% of the stated electoral quota. The figures supplied did not demonstrate a significant difference since the abandoned review in 2013 and it was, therefore, likely that the proposals would be similar. It was difficult to see what alternatives there were based on the statistics and the implication was that some Borough Wards could be divided across constituencies, which was not ideal for electors. Members were asked to note the target figures of 78,507 for the largest constituency electorate permissible and

71,031 for the smallest and that Telford fell short of this at 64,816. The electoral specialist confirmed that there would be no allowance for growth in the initial stages with the Review being based upon figures from December 2015.

The Chairman confirmed that he had discussed the potential timeline with the Leader of the Main Opposition and the Committee would need to meet again in October or November in order to make a recommendation to the Full Council meeting on 24 November 2016. The Chairman also noted that Individual Electoral Registration had hit electoral numbers in some areas, like Birmingham, quite hard whereas this Authority and Shropshire had maintained their numbers. He noted that local Wards had been split in the past and Members would need to be kept informed.

It was **AGREED** that

- (a) the Boundary Commission's detailed guidance will be circulated to Committee Members following publication; and
- (b) potential dates for the next meeting will be circulated before the summer recess.

BRC-11 Community Governance Reviews

The Chairman reported that himself and the Elections Specialist had met with representatives of Donnington & Muxton Parish Council and Newport Town Council and engaged in email correspondence with Chetwynd Aston Parish Council to ascertain their position on Community Governance Reviews and to explain the Council's position with regard to resources and timing. The Chair advised that a petition would be forthcoming from Donnington & Muxton Parish Council but the position for Newport Town Council and Chetwynd Aston Parish Council was more complicated as it related to a proposed housing development on a triangle of land at the boundary of Chetwynd Aston which Newport Town Council argued would be served by Newport. The Chair expressed the opinion that it was important that any proposals were led by the residents' wishes and changes were not imposed upon them unnecessarily. Councillor Eade asked for details of the precept value of the houses being built in the area under contention.

Members welcomed the opportunity to improve boundaries around St Georges Sports & Social Club and Humber Lane, Donnington.

The Assistant Director: Governance, Procurement and Commissioning reminded the Members that Reviews were subject to guidance from the Local Government Boundary Commission for England. Discussion took place on whether the guidelines and statutory guidance were sufficient to inform the potential forthcoming Reviews or whether a Policy would have more weight. The Assistant Director: Governance, Procurement and Commissioning advised Members that it was important that any Reviews were managed during 2017 to take effect in May 2019, due to resource implications.

The meeting ended at 6.35pm

Chairman:

Date:

TELFORD & WREKIN COUNCIL

BOUNDARY REVIEW COMMITTEE – 29 SEPTEMBER 2016

REVIEW OF PARLIAMENTARY CONSTITUENCIES: COUNCIL RESPONSE

REPORT OF ASSISTANT DIRECTOR: GOVERNANCE, PROCUREMENT AND COMMISSIONING

1. SUMMARY

- 1.1 The Boundary Commission for England have commenced a public consultation for future parliamentary constituencies for the Borough.
- 1.2 The proposals are that there should be a Telford constituency and a Bridgnorth, Wellington and The Wrekin constituency.
- 1.3 The Committee is asked for a draft consultation response to be put for recommendation to the Council.
- 1.4 A review of the Committee's terms of reference and procedure is also required.
- 1.5 The Committee should take account of the Motion relating to constituency boundaries considered by Full Council at its meeting on 22 September 2016.

2. RECOMMENDATIONS

- (i) That Boundary Review Committee review and agree the terms of reference attached at Appendix 2; and
- (ii) That Boundary Review Committee consider the consultation report attached, and put forward any comments/views on a Council response to the proposals which will be considered at a subsequent full Council meeting.

3. SUMMARY IMPACT ASSESSMENT

COMMUNITY IMPACT	Do these proposals contribute to specific Priority Plan objective(s)?	
	No	
	Will the proposals impact on specific groups of people?	
	No	<i>Borough Wide</i>
DELIVERY DATE	Deadline for submissions in this Review –	
FINANCIAL/VALUE FOR MONEY IMPACT	No	There are no financial implications that will arise as a result of accepting the recommendations of this report. RP-15.9.16
LEGAL ISSUES	Yes	The Council's Constitution states that it is the responsibility of the Boundary Review Committee to prepare information on and to recommend consultation

		responses to Council on Parliamentary Boundary Reviews. Further, the Committee is also required by the Constitution to consider its terms of reference annually at the first meeting after the annual council meeting.
OTHER IMPACTS, RISKS & OPPORTUNITIES	No	
IMPACT ON SPECIFIC WARDS	Yes	<i>Borough-wide impact.</i>

BACKGROUND

Parliamentary Boundary review

- 1.1 On 13 September 2016 the Boundary Review Commission for England issued proposals to amend the parliamentary boundaries for Telford and The Wrekin constituencies respectively. The proposals are set out at Appendix 1 and have been made the subject of a public consultation.
- 1.2 The proposal for the Telford constituency is that the ward boundary will be extended to take in the district wards of Donnington and Hadley & Leegomery which are currently in the Wrekin constituency.
- 1.3 The proposal for The Wrekin constituency, further to the amendments referred to in 1.2 above, is to extend the constituency by including six Shropshire county wards, from the existing Ludlow constituency, including the towns of Bridgnorth, Broseley, and Much Wenlock. This constituency would be called Bridgnorth, Wellington and The Wrekin.
- 1.4 This Committee is asked to consider the proposals and make recommendations to the Council regarding a consultation response to be returned to the Boundary Commission for England. The deadline for submitting the consultation response is 5 December 2016.

Terms of Reference

- 2.1 In line with rules set out in the Council's Constitution the Committee is requested to review its terms of reference to ensure that they are up to date and effective. As the Committee will be aware, a new constitution came into effect recently and this will be the first occasion that the Committee has considered the terms of reference as they appear in the new constitution document. Officers have no recommendations to make any amendments.

Report prepared by Matt Cumberbatch, Democratic & Legal Services Manager, telephone 01952 383233 and Deborah Moseley, Democratic Services & Scrutiny Team Leader, telephone 01952 383215.

Guide to the 2018 Review of Parliamentary constituencies

Contents

Introduction	2
Who we are and what we do	2
Purpose of the Guide	3
Contact details	4
UK electoral boundaries the BCE is not responsible for	4
Preparing for the review	5
The base data for the 2018 Review	5
The distribution of constituencies	5
Establishing policy and procedure	6
Developing proposals – requirements and policy	7
Statutory electorate range	7
Other statutory factors	7
Interplay of the considerations	9
Factors the BCE will not consider	9
Naming and designating constituencies	10
Developing proposals – process	12
Publication of initial proposals	12
Initial consultation period	13
Secondary consultation period	16
Development of revised proposals	16
The importance of participation	17
Final recommendations and report	17
After the final report	18
Conclusion	19
Appendices	20
A Who we are	20
B Contact details for other Commissions	21
C European Parliament electoral regions in England	22
D Rules for redistribution of seats (Schedule 2 to the Act)	23
E Glossary and abbreviations	26
Endnotes	27

Introduction

Who we are and what we do

- 1 The Boundary Commission for England (BCE) is an independent and impartial non-departmental public body, which is responsible for reviewing Parliamentary constituency boundaries in England. The members of the BCE and other key positions are described at Appendix A.
- 2 The BCE has the task of periodically reviewing all the Parliamentary constituencies in England. It is currently conducting a review on the basis of rules most recently updated by Parliament in 2011. These latest rules involve a significant reduction in the number of constituencies in England and require constituencies to comply with new parameters, so far as the number of electors in each constituency is concerned.
- 3 The review process is heavily informed by public consultation. The BCE develops and publishes initial proposals for constituencies across England. Representations from the public about these proposals are then taken both in writing and at public hearings in each region of England. In light of all the views expressed about the initial proposals, the BCE may revise them and then conduct a further round of written consultation on the revised proposals.
- 4 The BCE is required to make a formal report to the Government during September 2018, recommending any changes that it believes are appropriate to the distribution, size, shape, name or designation of constituencies in England. This review is therefore referred to as ‘the 2018 Review’.
- 5 The Government will turn the recommendations of the BCE into draft legislation, which is then presented to Parliament. If Parliament approves the legislation, the recommended changes will be implemented for the next General Election after the date on which the legislation is passed.

Purpose of the Guide

- 6 The BCE has produced this Guide to help to explain how the process for the 2018 Review will work. The Guide covers both what the law says the BCE must do as part of the process, and issues where the BCE has decided – as a matter of policy within its own discretion – to take a particular approach.
- 7 This Guide sets out a detailed and technical statement of the statutory framework, the review process and the BCE’s policies in developing proposals and final recommendations.
- 8 The BCE hopes that, by clarifying the process and policy in this way, the Guide will both encourage those who may be thinking of making their views known and help to ensure that those who do make their views known can do so in the most well-informed and effective manner. The Guide therefore aims:
 - to **explain clearly how and when the public may contribute their views**, so as to most effectively inform the development of the BCE’s final recommendations; and
 - to explain the significant changes that were most recently made to the law governing Parliamentary constituency reviews by the Parliamentary Voting System and Constituencies Act 2011 (‘the 2011 Act’). **The 2011 Act has a major impact on the way a review operates, and particularly the first review to be completed¹ following that legislation is likely to result in some degree of change to a large number of existing constituencies.**
- 9 However, the Guide is not intended to be a full statement of the law about the review and redistribution of Parliamentary constituencies. For a definitive statement of that law, please refer to the provisions of the Parliamentary Constituencies Act 1986 (as amended by the Boundary Commissions Act 1992 and the 2011 Act) available at www.legislation.gov.uk. The 1986 Act (as amended) is referred to throughout the remainder of this Guide simply as ‘the Act’.

Contact details

- 10 Any queries about the content of this Guide, or on any other aspect of the work of the BCE, can be raised using these contact details:

Boundary Commission for England
35 Great Smith Street
London
SW1P 3BQ

Telephone: 020 7276 1102

Email: information@boundarycommissionengland.gov.uk

Web: www.independent.gov.uk/boundarycommissionforengland

- 11 All material published by the BCE and other information about the 2018 Review may be found on its website.

UK electoral boundaries the BCE is not responsible for

- 12 There are separate Boundary Commissions for Northern Ireland, Scotland and Wales, which are responsible for the review of Parliamentary constituencies in their respective parts of the United Kingdom
- 13 The BCE has no responsibility for the review of local government electoral boundaries or structural reviews of local government. In England, such reviews are the responsibility of the Local Government Boundary Commission for England, while similar bodies conduct local government reviews in the other parts of the UK.
- 14 Contact details for all these bodies are to be found in Appendix B.

Preparing for the review

The base data for the 2018 Review

- 15 The Act provides that the electorate figures that are to be used for a review are those that were in the version of the electoral register published on the 'review date'. This is defined by the Act as the date two years and ten months before the review is required to report to the Government. **For the 2018 Review, this means that the electorate figures used must be those from the electoral registers that were required to be published on or before 1 December 2015** (although in certain special circumstances registers may in fact have had publication delayed by a couple of months). The BCE has published on its website all the base electorate data for the 2018 Review.
- 16 The Act says that the BCE may have regard to 'local government boundaries' in developing its proposals. The Act defines such boundaries in England as the boundaries of: counties and their electoral divisions; districts and their wards; London boroughs and their wards; and the City of London; all as they were in force on the last ordinary day of election of councillors before the review date. **For the 2018 Review, this means the local government boundaries referred to are those in force as at 7 May 2015.** The local government boundaries that the BCE is using for the 2018 Review can be found in the Ordnance Survey's Boundary Line mapping product (October 2015 version).² The maps published alongside the BCE's proposals (in hard copy and on the BCE website) will also show the relevant local government boundaries.

The distribution of constituencies

- 17 The Act now requires there to be a fixed number of 600 constituencies for the whole of the UK.³ Having stated that no single constituency may be split between different parts of the UK,⁴ the Act provides a mathematical formula⁵ to determine how many constituencies each of the four parts of the UK should be allocated, based on the electorate figures as at the review date. **The number of constituencies allocated to England for the 2018 Review is 501.** Two of these constituencies are expressly reserved for the Isle of Wight, which the Act specifically states must have two constituencies.⁶
- 18 The BCE has subsequently distributed the remaining 499 constituencies (i.e. the total English allocation less the two reserved for the Isle of Wight) between the regions used for European Parliament elections.⁷ In order to do so, the BCE used the same mathematical formula (commonly known as the Sainte-Laguë method) as that provided in the Act for the initial allocation between the four parts of the UK.

19 This gives the following allocation of constituencies between the regions:

Eastern	57
East Midlands	44
London	68
North East	25
North West	68
South East	81*
South West	53
West Midlands	53
Yorkshire and the Humber	50

* Plus the two constituencies for the Isle of Wight

20 In developing its proposals, the BCE allocates the specified number of constituencies within the relevant region and aims to produce initial proposals in which each constituency is wholly contained within a single region. This approach does not prevent anyone from putting forward counter-proposals that include one or more constituencies being split between regions, but very compelling reasons would need to be given to persuade the BCE to depart from the region-based approach it adopts in formulating its initial proposals. A description of the extent of each region appears at Appendix C, and maps can be obtained from Ordnance Survey (or viewed on the BCE website once proposals are published).

Establishing policy and procedure

- 21 In considering the procedures for a review, the BCE consults the Parliamentary political parties on broad issues of policy ahead of the review, in line with its usual practice. Minutes of the 25 February 2016 meeting conducted with the representatives of these parties are published on the BCE's website.
- 22 In formulating its initial proposals for particular areas, the BCE exercises its own judgement and does not consult the major Parliamentary political parties, local authorities or any other interested groups or people. The BCE considers that it should take the initiative in preparing its proposals from all the information available to it. The proposals are therefore formed by the BCE from a position of independence and impartiality and are not influenced by any particular viewpoint or opinion. Once the proposals are published, the statutory procedures allow for a public consultation and political parties and others can then make their views on proposed boundaries known to the BCE.

Developing proposals – requirements and policy

Statutory electorate range

- 23 The Act sets out a number of Rules in Schedule 2 which are relevant to the detailed development of proposals for individual constituencies.⁸ Foremost among these is Rule 2, which provides that – apart from four specified exceptions – every constituency must have an electorate (as at the review date) that is no less than 95% and no more than 105% of the ‘UK electoral quota’. The UK electoral quota for the 2018 Review is, to the nearest whole number, 74,769.⁹
- 24 Accordingly, every constituency in England must have an electorate as at the review date that is **no smaller than 71,031 and no larger than 78,507**.
- 25 The specified exceptions to this in England are the two constituencies on the Isle of Wight.¹⁰ However, in all other aspects of the 2018 Review, the Isle of Wight is treated in the same way as other parts of England.

Other statutory factors

- 26 Rule 5 in Schedule 2 provides for a number of other factors that the BCE may take into account in establishing a new map of constituencies for the 2018 Review, specifically:
- special geographical considerations, including in particular the size, shape and accessibility of a constituency;
 - local government boundaries as they existed on 7 May 2015 (see paragraph 16);
 - boundaries of existing constituencies; and
 - any local ties that would be broken by changes in constituencies.¹¹

Special geographical considerations

- 27 The BCE considers that special geographical considerations that may have an impact on the ability to form a constituency with an electorate within the statutory electorate range will primarily relate to physical geography such as mountains, hills, lakes, rivers, estuaries, islands, rather than to human or social geography. Matters of culture, history, socio-economics and other possible aspects of non-physical geography are more likely to arise as issues when considering the separate factor of ‘local ties’.

Local government boundaries

- 28 The BCE may take into account local government boundaries. These include both the external boundaries of local councils and their internal – ward or electoral division – boundaries.

- 29 While the BCE proposes to identify constituencies by reference to local authority external boundaries as far as practicable, it is nevertheless often necessary to cross these boundaries in order to form constituencies that comply with the statutory electorate range.
- 30 The BCE uses wards (in district and borough council areas) or electoral divisions (in areas of unitary authorities that have a county status) as the basic building block for designing constituencies. The use of the term ‘ward’ throughout the rest of this document should be taken to include electoral divisions in unitary authorities.
- 31 The BCE seeks to avoid dividing wards between constituencies wherever possible. Wards are well-defined and well-understood units, which are generally indicative of areas which have a broad community of interest. Any division of these units between constituencies would be likely to break local ties, disrupt political party organisations, and cause difficulties for Electoral Registration and Returning Officers. The BCE’s view is therefore that wards should continue to be the default building block for constituencies. However, the BCE recognises that in a few cases there may be **exceptional and compelling circumstances – having regard to the specific factors identified in Rule 5 – that may make it appropriate to divide a ward. Strong evidence and justification will need to be provided in any constituency scheme that proposes to split a ward, and the number of such ward splits should be kept to an absolute minimum. Examples of circumstances in which the BCE might propose splitting a ward could include: a) where all the possible ‘whole ward’ options in an area would significantly cut across local ties; or b) where splitting a single ward may prevent a significant ‘domino effect’ of otherwise unnecessary change to a chain of constituencies in order to meet the electorate totals requirement. Where the BCE does accept the need to split a ward, it will seek to do so along the boundaries of the polling districts that form part of that ward.**

Boundaries of existing constituencies

- 32 The BCE intends to have regard generally to existing constituencies as far as possible, as it does not consider that it would be appropriate to start from a ‘blank sheet of paper’. However, this does not mean that an existing constituency should be automatically considered to be ‘protected from change’, simply on the basis of its electorate figure already falling within the statutory range. One of the effects of reducing the overall number of constituencies allocated to England, together with the requirement of the statutory electorate range, is that many of the existing constituencies that have an electorate that is within the statutory range will, nonetheless, need to be altered as a result of the need to create viable constituencies in the surrounding area.

Interplay of the considerations

- 33** The policy of the BCE is to take into account all the factors listed in Rule 5 as far as possible, subject to the primacy of the statutory electorate range under Rule 2.
- 34** The Act does not require the BCE to seek to achieve constituency electorates that are ‘as close as possible to’ the UK electoral quota. Nor does the BCE consider it appropriate to superimpose on the statutory scheme a policy objective of trying to minimise divergence from the UK electoral quota. Such an objective would undermine the ability of the BCE to take properly into account the factors listed in Rule 5 in accordance with the policy at paragraph 33 above. Therefore, by way of illustration, the BCE would prefer to identify a constituency that had, say, a 4% variance from the UK electoral quota, but which respected local ties, in preference to an alternative that produced a constituency with only a 1% variance, but which would split communities.
- 35** As far as possible, the BCE seeks to create constituencies:
- from wards that are adjacent to each other; and
 - that do not contain ‘detached parts’, i.e. where the only physical connection between one part of the constituency and the remainder would require travel through a different constituency.

Factors the BCE will not consider

Impact on future election results

- 36** The BCE is an independent and impartial body. It emphasises very strongly that existing voting patterns and the prospective fortunes of political parties should not and do not enter its considerations during a review.

New local government boundaries

- 37** The local government boundaries that the BCE may have regard to are – as stated above – those that existed on 7 May 2015. Consequently, the BCE will not generally take into account new boundaries that came into effect at local council elections in May 2016, or in subsequent years.
- 38** However, in the limited circumstances (if any) where the BCE has to consider whether it should divide a ward (as it existed on 7 May 2015) between constituencies in order to meet the statutory electorate range, and if so how it should be divided (which it will seek to do on the component polling district boundaries), the BCE is prepared to take into account as appropriate any new ward boundaries introduced after 7 May 2015.

Changes to electorates after the review date

- 39 The BCE is required to work on the basis of the numbers of electors on the electoral registers at the 'review date'. It is unable to take account of any under-registration or over-registration of electors that may be claimed in some areas.
- 40 However, the BCE does not take the view that it is obliged to shut its eyes entirely to growth (or decline) that has occurred since the review date, which it may be aware of from the annual updates of electorate figures it receives, or that it is satisfied is likely to occur. Such a factor may be taken into account in choosing between two or more competing options for the same area that satisfy the statutory rules.

Naming and designating constituencies

- 41 In making its recommendations, the BCE is also required by the Act to specify a name and designation for each proposed constituency. The Act contains no guidance on these points.

Naming

- 42 The BCE's policy on the naming of constituencies is that, when constituencies remain largely unchanged, the existing constituency name should usually be retained. In such cases constituency names are likely to be altered only where there is good reason for change.
- 43 Generally, the BCE considers that the name should normally reflect the main population centre(s) contained in the constituency, though if a suitable alternative name is proposed which generally commands greater support locally than that proposed by the BCE, it will usually be prepared to recommend that alternative.
- 44 The BCE adopts compass point names when there is not a more suitable name. The compass point reference used will generally form a prefix in cases where the rest of the constituency name refers to the county area or a local council, but a suffix where the rest of the name refers to a population centre. Examples of existing constituencies that demonstrate these principles are North Shropshire and Reading West.

Designation

- 45 The Act also requires that each constituency is designated as either a ‘county constituency’ or a ‘borough constituency’. The BCE considers that, as a general principle, where constituencies contain more than a small rural element they should normally be designated as county constituencies. In other cases they should be designated as borough constituencies. The designation is suffixed to the constituency name and is usually abbreviated: BC for borough constituency and CC for county constituency
- 46 The designation generally determines who shall act as Returning Officer for Parliamentary elections. The Returning Officer in borough constituencies is a district council chairman or mayor. For county constituencies it is the high sheriff.
- 47 The designation also determines the limit on the amount that a candidate is allowed to spend during a Parliamentary election in the constituency. The limit is slightly lower in borough constituencies, to reflect the lower costs of running a campaign in an urban, usually compact, area.

Developing proposals – process

- 48 The BCE obtained the electorate figures from Electoral Registration Officers in local authorities, either directly, or indirectly through the Office for National Statistics. When all the figures had been received, the four Parliamentary Boundary Commissions agreed the UK electoral quota and the number of constituencies allocated to each part of the UK (see above for the actual figures that have been agreed for the 2018 Review).
- 49 As explained above, the BCE has allocated constituencies among the nine regions of England using the Sainte-Laguë method (explained on our website), and has determined that, in the absence of compelling reasons to the contrary, no constituency should cross a boundary between two regions.
- 50 The mandatory nature of Rule 2 in the legislation – concerning the statutory electorate range for constituencies – means that it will be necessary for constituencies to cross a number of external local authority boundaries, but the BCE has sought to minimise the extent to which this happens. Accordingly, as an aid to the process of constituency design at the sub-region level, the BCE has found it useful to use ‘groupings’ of two or more local authority areas, and to seek not to cross the boundaries between these groupings. The groupings used for the 2018 Review will be explained in the initial proposals.
- 51 Within each ‘sub-region’ grouping, the BCE identifies the appropriate number of constituencies to fit within the area that the grouping covers. This is done by dividing the total electorate within that grouping (as at the review date) by the UK electoral quota, with appropriate rounding applied to any fractions.
- 52 Taking into account all the considerations mentioned above and using wards as default building blocks, the BCE then works in detail on how to divide the sub-region into the relevant number of constituencies.
- 53 While the BCE uses a particular pattern of sub-regions for its initial proposals, this does not preclude an individual from submitting a counter-proposal during the consultation stage that is, for example, based on a viable alternative pattern of sub-region groupings.

Publication of initial proposals

- 54 When the BCE has decided on its initial proposals, it publishes information on its website (including a series of reports to explain the proposals), together with detailed information about how and when views on those proposals can be submitted. At the same time, it sends hard copies of the proposals to various local ‘places of deposit’, where the public may view the proposals.

- 55 The places of deposit where the public may inspect the proposals are usually the offices of the relevant local authority, although other places such as public libraries may be used instead. There will usually be one place of hard copy deposit in each proposed constituency (though some geographically large constituencies may contain more than one). A full list of where these are will be published on the BCE website at the same time as the proposals.
- 56 In addition to the initial proposals and its reports on them, in order to help the public better to understand the proposals, the BCE also places on deposit and on its website detailed maps showing, among other information, the name, designation and boundary of each proposed constituency.
- 57 To publicise the initial proposals, the BCE also notifies all interested parties (for example, local authorities, MPs, and academics) that it has published and is consulting on them. The House of Commons library also receives copies of the detailed maps. In advance of the information being sent out, the BCE also issues a press release about the initial proposals, the representation period and the subsequent procedures of a review.
- 58 Copies of the initial proposals, reports and accompanying maps, and all other material published by the BCE, are placed on its website – www.independent.gov.uk/boundarycommissionforengland.
- 59 For the 2018 Review, the BCE plans to publish its initial proposals in the week commencing 12 September 2016.

Initial consultation period

- 60 The new statutory framework sees a significant change in the consultation process. The 2018 Review is being carried out under a new procedure that relies on a combination of written representations and oral representations at public hearings. The previous practice of public inquiries was abolished in 2011 and replaced by shorter public hearings. These hearings are not inquiries, public meetings or debates, but are there to provide an opportunity both for the BCE to explain its initial proposals and for people to give their views on those proposals.
- 61 The BCE attaches just as much significance to representations made in writing and through its website as to those made orally at public hearings – the content of the representation is more important than the form it takes. There needs to be careful management of the conduct of the hearings, since they are strictly limited by statute to last for no more than two days each. However, if there is not time for someone who wishes to speak to say to the BCE everything they would like to, representations can still be made in writing within the 12-week consultation period.

62 Those who give their views – whether orally or in writing – are requested to say whether they approve of, or object to, the BCE’s proposals. In particular, objectors are advised to say what they propose in place of the BCE’s proposals. An objection accompanied by a viable counter-proposal is likely to carry more weight than a simple statement of objection. In this respect – and particularly in light of the importance of Rule 2 (statutory electorate range) – a counter-proposal setting out the composition of each constituency in an area will generally be viewed as more persuasive than a proposal for the composition of only one constituency which does not address any knock-on effects on the electorate figures of other constituencies.

Written representations

63 The BCE is required to consider all written representations made to it within a statutory 12-week period commencing with publication of the initial proposals. Details of how to make written representations, including the last date for receipt of representations, will be published alongside the initial proposals themselves. The BCE will be encouraging all interested parties to contribute views through its consultation website.

Public hearings

64 The BCE is required to conduct between two and five public hearings in each region of England. These must take place during weeks five to ten of the 12-week initial consultation period, so for the 2018 Review they are likely to take place between mid-October and mid-November 2016. The number of hearings in each region will be as follows:

Eastern	4
East Midlands	3
London	5
North East	2
North West	5
South East	5
South West	4
West Midlands	4
Yorkshire and the Humber	4

65 This distribution of hearings reflects the number of constituencies each region has been allocated. The details of locations and dates for the hearings will be announced on the BCE website in due course, and published again alongside the initial proposals themselves.

- 66 A public hearing is intended to provide an opportunity for people to make representations about any of the BCE's initial proposals for that region and to present any counter-proposals. Unlike the local inquiries of the past, a public hearing under the new statutory scheme is not intended to focus to any significant degree on comments about any counter-proposals that may be put forward by others, as this can be done in the secondary consultation period (see paragraph 74).
- 67 Presentations at each public hearing are likely to focus on proposals for the area closest to the location of the hearing, but this does not preclude giving a presentation that relates to any part of the region in which the hearing is located. However, a representation should not be made that relates wholly to another region.
- 68 Each hearing is chaired by an independent Assistant Commissioner selected by the BCE, who controls proceedings and may ask – or allow to be asked – questions of an individual giving a presentation. Questions should generally be asked through the Chair and should ordinarily be seeking clarification rather than trying to 'cross-examine' the speaker on their views.
- 69 Once details of the dates and locations of the public hearings have been published, individuals wishing to make an oral presentation at one of the hearings are encouraged to book in advance with the BCE. Details of how to book a speaking slot at a public hearing will be published alongside the initial proposals. At each 'lead' hearing – the first in the region – the five political parties with English seats in the UK Parliament will be offered a longer speaking slot at the start of the hearing to set out their proposals for the whole region. This longer speaking slot allows the political parties to address the whole region – it should be made clear that the BCE places no more weight on the representations from the political parties than from anyone else.
- 70 The BCE should make it clear that the duration of speaking slots is likely to be very limited, so presentations will need to be clear, concise and focused. Those intending to speak at a public hearing will also need to be reasonably flexible about when exactly they are asked to start and finish their presentation.
- 71 It will be for the Assistant Commissioner chairing the public hearing to decide when to call on speakers and the amount of time to be allocated to them. To aid the Assistant Commissioner in this task, it will be helpful if a synopsis or outline of the points the speaker wishes to make can be provided in advance. Guidance on how and when to do this will be published alongside the initial proposals.
- 72 The BCE encourages the use of visual aids during the making of oral representations at public hearings. The BCE will have a laptop and projector available at each hearing to provide for an electronic presentation using MS Office software (for example PowerPoint) or Google Apps (for example Google Slides). The BCE will also seek to facilitate the use of other visual aids as far as reasonably practical, where given sufficient notice.

- 73** Each public hearing will have a record taken of all the representations made, and any visual aids used at a presentation will be attached to that record on publication at the secondary consultation period.

Secondary consultation period

- 74** As soon as possible after the initial 12-week consultation on the BCE's initial proposals, the BCE publishes on its website all of the representations that it has received for each region (including the records of the public hearings). Once the representations have been published there is a further statutory four-week period during which people can submit to the BCE written comments on those representations it received during the initial consultation period, for example challenging or supporting assertions made in a representation. There are no public hearings at this stage.

Development of revised proposals

- 75** The BCE staff and Assistant Commissioners consider all the written representations received and oral representations made at public hearings in the initial consultation period, and all the written representations made in the four-week secondary consultation period. They then write a joint report on each region for the Commissioners, summarising and considering the representations and recommending whether – and, if so, how – the initial proposals for that region should be revised in the light of those representations. The Commissioners then consider each report and determine whether and to what extent revisions should be made to their initial proposals.
- 76** The BCE then publishes a report for each region stating whether or not revisions have been made to the initial proposals for that region. Alongside these reports it publishes all the written representations received during the four-week secondary consultation period.
- 77** If the proposals are revised, then the Act provides for a further period of eight weeks for written representations to be made to the BCE on the revised proposals for that region. There are no public hearings at this stage; nor is there a repeat of the four-week period for commenting on the representations of others.
- 78** Publication of any representations received during the eight-week consultation on revised proposals will take place alongside publication of the final report (see paragraphs 82 to 84).

The importance of participation

- 79** The BCE wishes to stress very strongly that any person or organisation interested in the proposals for their area is encouraged to exercise their statutory right to make written or oral representations to the BCE, whether for or against the proposals.
- 80** A particular problem is to elicit such a response at the right time. For example, in previous reviews there were several occasions when people who had not made known their support for the initial proposals were surprised when the BCE subsequently published revised proposals. It was only at that late stage that they then made known their support for the initial proposals, often in very large numbers.
- 81** Full and timely participation ultimately assists the BCE in gauging more accurately local opinion on its proposals, and consequently increases the likelihood that its final recommendations will be generally acceptable to the majority of those who will have to live and work with them.

Final recommendations and report

- 82** The BCE takes into consideration any written representations made in the eight-week consultation period about the revised proposals, and makes its final decisions about whether further modifications need to be made in light of those representations.
- 83** When the BCE has decided on its final recommendations for the whole of England, it then drafts and submits a formal written report to the Government. The report, which is also published, contains a description of the review in each region, a textual description of all the final recommendations, and a set of maps to illustrate the existing boundaries and those proposed by the final recommendations.
- 84** The submission of the formal final report concludes the review process. The procedure to implement new constituencies is the responsibility of the Government and Parliament.

After the final report

- 85 After the Government has received the final report of the BCE, it must lay it before Parliament.
- 86 Where a final report submitted by any of the four Parliamentary Boundary Commissions in the UK recommends alterations to existing constituencies, the Government must also lay before Parliament a draft of an Order in Council, giving effect to the recommendations in the report(s). In preparing that draft, the Government may not modify the recommendations of any of the Parliamentary Boundary Commissions, unless it has been expressly requested to do so (in writing and with reasons) by the relevant Parliamentary Boundary Commission.
- 87 The draft Order must be actively debated and approved (or rejected) by both Houses of Parliament. If the draft Order in Council is not approved, the Government may then amend the draft and lay an amended draft before Parliament for approval.
- 88 Once the Order in Council has been approved by Parliament, the Government is required to submit it to be made by Her Majesty in Council. After the Order in Council has been made, the new constituencies take effect at the next General Election. Any by-elections held in the meantime have to be held on the basis of the old (existing) constituencies. The validity of an Order in Council, once made, may not be called into question in any legal proceedings.

Conclusion

- 89 It is hoped that the information and explanations given in this Guide will fulfil the purpose set out in the Introduction, helping to clarify the process and policy for interested parties and encourage their informed participation, and thereby assisting the BCE in carrying out its work.
- 90 If any person has any suggestions as to how the Guide may be improved, whether by correction, clarification, addition or deletion or in any other way, please write to the Secretary to the Boundary Commission for England at the address given in the Introduction. The BCE would be pleased to consider any such suggestions for the production of a similar Guide in future reviews.

Appendix A

Who we are

Chairman

The Speaker of the House of Commons is the Chairman of each of the four Parliamentary Boundary Commissions. This is an ex officio appointment, and the Speaker generally plays no part in the substantive work of the Commission.

Three other members

- The Deputy Chair, who presides over the Commission's meetings, is the Hon Mrs Justice (Frances) Patterson, appointed in 2014. She was called to the Bar by the Middle Temple in 1977 and took Silk in 1998. She is a public lawyer who practised mainly in the field of planning and environmental law. She was appointed a Recorder in 2000, a Law Commissioner in 2010 and became a High Court Judge in October 2013. When at the Law Commission she led the project on the reform of electoral administration. She previously acted as an Assistant Commissioner for the BCE in 2005, during the Fifth General Review.
- David Elvin QC was appointed in 2009 and reappointed in 2014. He is a barrister, being a member of the Bars of both England and Wales, and Northern Ireland. He took silk in 2000 and became a Recorder in 2001 and a Deputy High Court Judge in 2008 (sitting in the Administrative Court). He is based at Landmark Chambers in London, with a specialism in planning, the environment, local government and property law (including aspects of human rights and EU law in these areas). He acted as an Assistant Commissioner during the Fifth General Review of constituencies.
- Neil Pringle was appointed in 2009 and reappointed in 2014. He was admitted as a solicitor in 1973 and subsequently held senior legal posts in local government. He has worked in a number of county councils and unitary authorities in England and Wales, including as Chief Executive in a county council and two unitary authorities. In the latter posts he gained extensive experience as Acting Returning Officer for Parliamentary elections.

Two assessors

(available to provide technical advice and support as requested)

- The Registrar General for England and Wales.
- The Director General of Ordnance Survey.

Secretary to the Commission

Sam Hartley, appointed in 2015 to lead the Secretariat in administering the 2018 review and generally supporting the Commissioners in their work.

Assistant Commissioners

Appointed by the Secretary of State, at the request of the Commission, to assist it in the discharge of its functions. The Commission requests the appointment of independent Assistant Commissioners to: chair the public hearings; work with the Secretariat in analysing the responses to consultations; and – based on that analysis – make recommendations to Commissioners as to what might be appropriate revisions to the Commission's earlier proposals for an area.

Appendix B

Contact details for other Commissions

The Local Government Boundary Commission for England

14th Floor
Millbank Tower
London, SW1P 4QP

Telephone: 0330 500 1525 (switchboard)

Email: reviews@lgbce.org.uk

Web address: www.lgbce.org.uk

The Boundary Commission for Wales (Parliamentary and Local Government Commissions share a single Secretariat)

Ground Floor
Hastings House
Fitzalan Court
Cardiff, CF24 0BL

Telephone: 029 2046 4819

Email: bcomm.wales@wales.gsi.gov.uk
(for Parliamentary)

ldbc.wales@wales.gsi.gov.uk
(for Local Government)

Web address: www.bcomm-wales.gov.uk
(for Parliamentary)

<http://ldbc.gov.wales/> (for Local Government)

The Boundary Commission for Scotland

(Parliamentary and Local Government Commissions share a single Secretariat)

Thistle House
91 Haymarket Terrace
Edinburgh, EH12 5HD

Telephone: 0131 538 7510

Email: bcs@scottishboundaries.gov.uk
(for Parliamentary)

lgbcs@scottishboundaries.gov.uk
(for Local Government)

Web address: <http://www.bcomm-scotland.independent.gov.uk/> (for Parliamentary)

www.lgbc-scotland.gov.uk
(for Local Government)

The Boundary Commission for Northern Ireland

(Parliamentary boundaries only)

The Bungalow
Stormont House
Stormont Estate
Belfast, BT4 3SH

Telephone: 028 9052 7821

Email:

contact@boundarycommission.org.uk

Web address:

www.boundarycommission.org.uk

For queries about local government boundaries in Northern Ireland, contact:

Local Government Policy Division,
Department of the Environment,
Goodwood House (6th Floor),
44–58 May Street
Belfast, BT1 4NN

Telephone: 028 9025 4726

Email: lgpd@doeni.gov.uk

Web address: <https://www.doeni.gov.uk/topics/local-government>

Appendix C

European Parliament electoral regions in England

The following is the list of unitary authorities and non-metropolitan county councils within each region:

East Midlands	Derby, Derbyshire, Leicester, Leicestershire, Lincolnshire, Northamptonshire, Nottingham, Nottinghamshire, Rutland.
Eastern	Bedford, Central Bedfordshire, Cambridgeshire, Essex, Hertfordshire, Luton, Norfolk, Peterborough, Southend-on-Sea, Suffolk, Thurrock.
London	The 32 London borough councils, plus the Corporation of the City of London.
North East	Darlington, Durham, Gateshead, Hartlepool, Middlesbrough, Newcastle-upon-Tyne, North Tyneside, Northumberland, Redcar and Cleveland, South Tyneside, Stockton-on-Tees, Sunderland.
North West	Blackburn with Darwen, Blackpool, Bolton, Bury, Cheshire East, Cheshire West and Chester, Cumbria, Halton, Knowsley, Lancashire, Liverpool, Manchester, Oldham, Rochdale, St Helens, Salford, Sefton, Stockport, Tameside, Trafford, Warrington, Wigan, Wirral.
South East	Berkshire, Brighton and Hove, Buckinghamshire, East Sussex, Hampshire, Isle of Wight, Kent, Medway, Milton Keynes, Oxfordshire, Portsmouth, Southampton, Surrey, West Sussex.
South West	Bath and North East Somerset, Bournemouth, Bristol, Cornwall, Devon, Dorset, Gloucestershire, Isles of Scilly, North Somerset, Plymouth, Poole, Somerset, South Gloucestershire, Swindon, Torbay, Wiltshire.
West Midlands	Birmingham, Coventry, Dudley, Herefordshire, Sandwell, Shropshire, Solihull, Staffordshire, Stoke-on-Trent, Telford and Wrekin, Walsall, Warwickshire, Wolverhampton, Worcestershire.
Yorkshire and the Humber	Barnsley, Bradford, Calderdale, Doncaster, East Riding of Yorkshire, Kingston upon Hull, Kirklees, Leeds, North East Lincolnshire, North Lincolnshire, North Yorkshire, Rotherham, Sheffield, Wakefield, York.

Appendix D

Rules for redistribution of seats (Schedule 2 to the Act)

- Number of constituencies**
- 1 The number of constituencies in the United Kingdom shall be 600.
- Electorate per constituency**
- 2 1) The electorate of any constituency shall be—
- (a) no less than 95% of the United Kingdom electoral quota, and
- (b) no more than 105% of that quota.
- (2) This rule is subject to rules 4(2), 6(3) and 7.
- (3) In this Schedule the “United Kingdom electoral quota” means—
- $$\frac{U}{596}$$
- where U is the electorate of the United Kingdom minus the electorate of the constituencies mentioned in rule 6.
- Allocation of constituencies to parts of the United Kingdom**
- 3 (1) Each constituency shall be wholly in one of the four parts of the United Kingdom (England, Wales, Scotland and Northern Ireland).
- (2) The number of constituencies in each part of the United Kingdom shall be determined in accordance with the allocation method set out in rule 8.
- Area of constituencies**
- 4 (1) A constituency shall not have an area of more than 13,000 square kilometres.
- (2) A constituency does not have to comply with rule 2(1)(a) if—
- (a) it has an area of more than 12,000 square kilometres, and
- (b) the Boundary Commission concerned are satisfied that it is not reasonably possible for the constituency to comply with that rule.
- Factors**
- 5 1) A Boundary Commission may take into account, if and to such extent as they think fit—
- (a) special geographical considerations, including in particular the size, shape and accessibility of a constituency;
- (b) local government boundaries as they exist on the most recent ordinary council-election day before the review date;
- (c) boundaries of existing constituencies;
- (d) any local ties that would be broken by changes in constituencies;
- (e) the inconveniences attendant on such changes.¹²
- (2) The Boundary Commission for England may take into account, if and to such extent as they think fit, boundaries of the electoral regions specified in Schedule 1 to the European Parliamentary Elections Act 2002 (ignoring paragraph 2(2) of that Schedule and the references to Gibraltar) as it has effect on the most recent ordinary council-election day before the review date.
- (3) This rule has effect subject to rules 2 and 4.

Protected constituencies

- 6 (1) There shall be two constituencies in the Isle of Wight.
- (2) There shall continue to be—
- (a) a constituency named Orkney and Shetland, comprising the areas of the Orkney Islands Council and the Shetland Islands Council;
 - (b) a constituency named Na h-Eileanan an Iar, comprising the area of Comhairle nan Eilean Siar.
- (3) Rule 2 does not apply to these constituencies.

Northern Ireland

- 7 (1) In relation to Northern Ireland, sub-paragraph (2) below applies in place of rule 2 where—
- (a) the difference between—
 - (i) the electorate of Northern Ireland, and
 - (ii) the United Kingdom electoral quota multiplied by the number of seats in Northern Ireland (determined under rule 8), exceeds one third of the United Kingdom electoral quota, and
 - (b) the Boundary Commission for Northern Ireland consider that having to apply rule 2 would unreasonably impair—
 - (i) their ability to take into account the factors set out in rule 5(1), or
 - (ii) their ability to comply with section 3(2) of this Act.
- (2) The electorate of any constituency shall be—
- (a) no less than whichever is the lesser of—
$$N - A$$
and 95% of the United Kingdom electoral quota, and

- (b) no more than whichever is the greater of—
$$N - A$$
and 105% of the United Kingdom electoral quota, where—
N is the electorate of Northern Ireland divided by the number of seats in Northern Ireland (determined under rule 8), and
A is 5% of the United Kingdom electoral quota.

The allocation method

- 8 (1) The allocation method referred to in rule 3(2) is as follows.
- (2) The first constituency shall be allocated to the part of the United Kingdom with the greatest electorate.
 - (3) The second and subsequent constituencies shall be allocated in the same way, except that the electorate of a part of the United Kingdom to which one or more constituencies have already been allocated is to be divided by—
$$2C + 1$$
where C is the number of constituencies already allocated to that part.
 - (4) Where the figure given by sub-paragraph (3) above is the same for two or more parts of the United Kingdom, the part to which a constituency is to be allocated shall be the one with the smaller or smallest actual electorate.
 - (5) This rule does not apply to the constituencies mentioned in rule 6, and accordingly—
 - (a) the electorate of England shall be treated for the purpose of this rule as reduced by the electorate of the constituencies mentioned in rule 6(1);

- (b) the electorate of Scotland shall be treated for the purposes of this rule as reduced by the electorate of the constituencies mentioned in rule 6(2).

Interpretation

- 9 (1) This rule has effect for the purposes of this Schedule.
- (2) The “electorate” of the United Kingdom, or of a part of the United Kingdom or a constituency, is the total number of persons whose names appear on the relevant version of a register of parliamentary electors in respect of addresses in the United Kingdom, or in that part or that constituency.

For this purpose the relevant version of a register is the version that is required by virtue of subsection (1) of section 13 of the Representation of the People Act 1983 to be published no later than the review date, or would be so required but for—

- (a) any power under that section to prescribe a later date, or
- (b) subsection (1A) of that section.

- (3) “Local government boundaries” are—
- (a) in England, the boundaries of counties and their electoral divisions, districts and their wards, London boroughs and their wards and the City of London,
 - (b) in Wales, the boundaries of counties, county boroughs, electoral divisions, communities and community wards,
 - (c) in Scotland, the boundaries of local government areas and the electoral wards into which they are divided under section 1 of the Local Governance (Scotland) Act 2004, and
 - (d) in Northern Ireland, the boundaries of wards.

- (4) “Ordinary council-election day” is—
- (a) in relation to England and Wales, the ordinary day of election of councillors for local government areas;
 - (b) in relation to Scotland, the day on which the poll is held at ordinary elections of councillors for local government areas;
 - (c) in relation to Northern Ireland, the day of an election for any district council (other than an election to fill a casual vacancy).
- (5) The “review date”, in relation to a report under section 3(1) of this Act that a Boundary Commission is required (by section 3(2)) to submit before a particular date, is two years and ten months before that date.
- (6) “The United Kingdom electoral quota” has the meaning given by rule 2(3).
- (7) A reference in rule 6 to an area is to the area as it existed on the coming into force of Part 2 of the Parliamentary Voting System and Constituencies Act 2011.

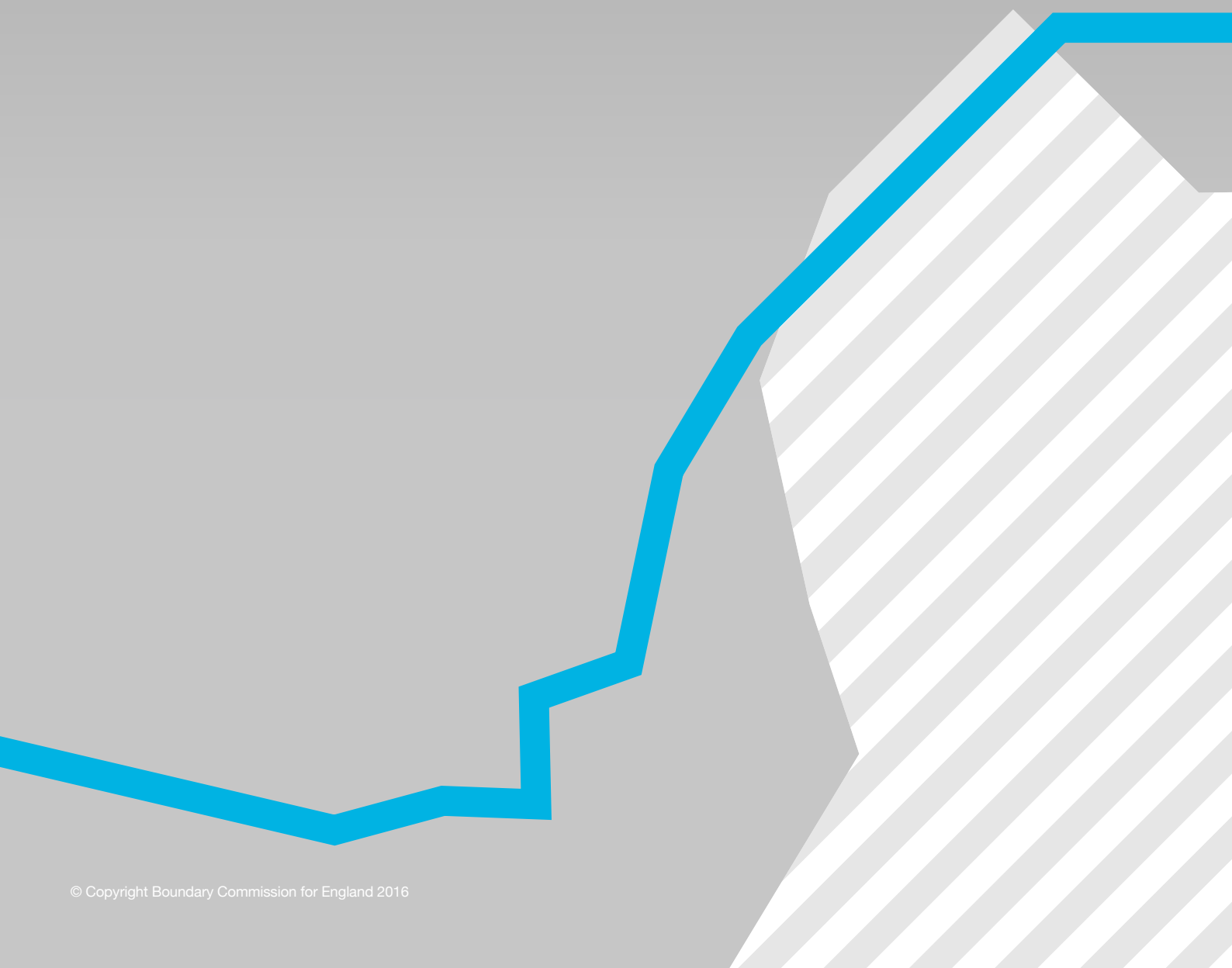
Appendix E

Glossary and abbreviations

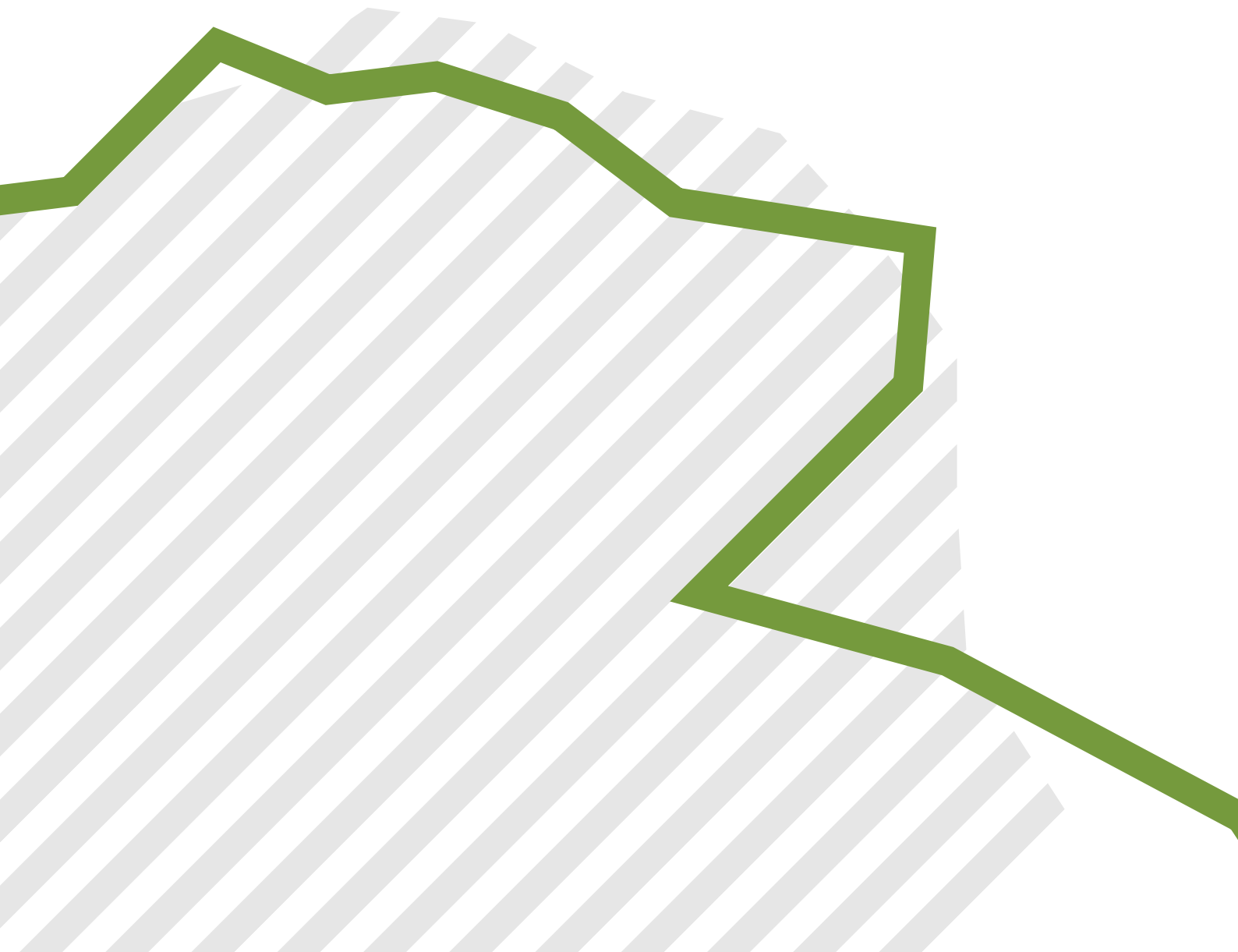
Assessor	Statutorily appointed technical adviser to the BCE, being either the Registrar General for England and Wales or the Director General of Ordnance Survey.	Redistribution of seats	Re-division of a given area into new Parliamentary constituencies.
Assistant Commissioner	Independent person appointed at the request of the BCE to assist it with the discharge of its functions.	Representations	The views provided by an individual, group or organisation to the BCE on its initial or revised proposals, either for or against, including counter-proposals and petitions.
Borough constituency abbreviated to BC	Parliamentary constituency containing a predominantly urban area.	Review date	Proposals must be based on the numbers of electors on the electoral registers on this date. Defined in the Act as the date two years and ten months before the final report is to be submitted (i.e. 1 December 2015 for the review that is to conclude with a final report by 1 October 2018).
County constituency abbreviated to CC	Parliamentary constituency containing more than a small rural element.	Revised proposals	The initial proposals as subsequently revised.
Designation	Classification as either a borough constituency or as a county constituency.	Rules for Redistribution of Seats	The statutory criteria for Parliamentary constituencies under Schedule 2 to the Parliamentary Constituencies Act 1986 (as amended).
Electorate	The number of registered Parliamentary electors in a given area.	Special geographical considerations	Dispensation to depart from the strict application of other criteria for Parliamentary constituencies; includes size, shape and accessibility.
(Statutory) Electorate range	The statutory rule that requires the electorate of every constituency (as at the review date) to be within 5% of the UK electoral quota.	UK electoral quota	The average number of electors in a constituency, found by dividing the total electorate of the UK (less that of the four specific 'protected' constituencies) by 596.
Final recommendations	The recommendations submitted in a formal final report to the Government at the end of a review. They may – or may not – have been revised since the initial proposals in any given area.	Unitary authority	An area where there is only one tier of local council (above any parish or town council). Contrasted with those 'shire district' areas that have two tiers (i.e. both a non-metropolitan county council and a district/borough/city council).
General review	Major review of all Parliamentary constituencies in England at the same time. From 2011 all Parliamentary constituency reviews are general reviews.		
Initial proposals	First formal proposals published by the BCE during the review for public consultation.		
Periodical report	Report to the Government following a general review of Parliamentary constituencies.		
Public hearing	Formal opportunity in a given area for people to make oral representations, chaired by an Assistant Commissioner. In each region of England there may be no fewer than two and no more than five hearings, and each may last a maximum of two days.		

Endnotes

- 1** The BCE began a review under the new rules in 2011, known as the 2013 Review. The 2013 Review was ended by Parliament before the BCE completed the review. The 2018 Review is therefore considered the first review under the new legislation.
- 2** Available free of charge at 1:50,000 and 1:250,000 scale from customerservices@ordnancesurvey.co.uk or 08456 050505.
- 3** Rule 1 of Schedule 2 to the Act.
- 4** Rule 3 of Schedule 2 to the Act.
- 5** Rule 8 of Schedule 2 to the Act.
- 6** Rule 6 of Schedule 2 to the Act.
- 7** Rule 5(2) of Schedule 2 to the Act provides that the BCE may have regard to the European Parliament electoral regions.
- 8** Schedule 2 to the Act is set out in full in Appendix D.
- 9** According to Rule 2(3) in Schedule 2 to the Act, the UK electoral quota is: 44,722,004 (the UK electorate as at the review date) divided by 596.
- 10** Rule 6(3) in Schedule 2 to the Act.
- 11** A further factor – ‘the inconveniences attendant on such changes’ – is expressly excluded for the first review following the Act, but may be considered for subsequent reviews.
- 12** (e) does not apply for the first review to report after the 2011 Act, by virtue of section 11(2) of that Act.



Initial proposals for new Parliamentary constituency boundaries in the West Midlands



Contents

	Summary	3
1	What is the Boundary Commission for England?	5
2	Background to the 2018 Review	7
3	Initial proposals for the West Midlands	11
	Initial proposals for the Staffordshire and Stoke-on-Trent sub-region	12
	Initial proposals for the Herefordshire, Shropshire, Telford and Wrekin, Warwickshire, West Midlands, and Worcestershire sub-region	13
4	How to have your say	19
	Annex A: Initial proposals for constituencies, including wards and electorates	23
	Glossary	37

Summary

Who we are and what we do

The Boundary Commission for England is an independent and impartial non-departmental public body which is responsible for reviewing Parliamentary constituency boundaries in England.

The 2018 Review

We have the task of periodically reviewing the boundaries of all the Parliamentary constituencies in England. We are currently conducting a review on the basis of rules set by Parliament in 2011. The rules tell us that we must make recommendations for new Parliamentary constituency boundaries in September 2018. They also result in a significant reduction in the number of constituencies in England (from 533 to 501), and require that every constituency – apart from two specified exceptions – must have an electorate that is no smaller than 71,031 and no larger than 78,507.

Initial proposals

We published our initial proposals for the new Parliamentary constituency boundaries in England on 13 September 2016. Information about the proposed constituencies is now available on our website.

What is changing in the West Midlands?

The West Midlands has been allocated 53 constituencies – a reduction of six from the current number.

Our proposals leave seven of the 59 existing constituencies unchanged.

As it has not always been possible to allocate whole numbers of constituencies to individual counties, we have grouped some county and local authority areas into sub-regions. The number of constituencies allocated to each sub-region is determined by the electorate of the combined local authorities.

Sub-region	Existing allocation	Proposed allocation
Herefordshire, Shropshire, Telford and Wrekin, Warwickshire, West Midlands, and Worcestershire	47	42
Staffordshire and Stoke-on-Trent	12	11

Consequently, it has been necessary to propose some constituencies that cross county or unitary authority boundaries and to alter the boundary of some existing constituencies that have an electorate within 5% of the electoral quota, which could otherwise be left unchanged, so as to ensure that the electorates of all constituencies throughout the region are within 5% of the electoral quota.

We have proposed one constituency that contains electors from both Staffordshire and the south of Stoke-on-Trent. Three of the existing constituencies in Staffordshire are unchanged.

We have proposed one constituency that contains electors from both Shropshire and the unitary authority of Telford and Wrekin, and combines the towns of Bridgnorth and Wellington. One constituency in Shropshire is unchanged.

We have proposed one constituency that contains electors from both Shropshire and Herefordshire, which combines the towns of Ludlow and Leominster. Another proposed constituency contains electors from Worcestershire and Herefordshire, which combines the towns of Great Malvern and Ledbury.

Additionally, we propose that electors from the south-east of the County of Worcestershire are combined with electors from the south-west of Warwickshire in one constituency. We also propose that electors from Solihull are combined with some electors from Warwickshire. Three constituencies in the County of West Midlands are unchanged.

How to have your say

We are consulting on our initial proposals for a 12-week period, from 13 September 2016 to 5 December 2016. We encourage everyone to use this opportunity to help us shape the new constituencies – the more views we hear, the more informed our decisions will be when considering whether to revise our proposals.

Our website at www.bce2018.org.uk has more information about how to respond as well as details of where and when we will be holding public hearings in your area. You can also follow us on Twitter @BCE2018 or using #2018boundaryreview.

1 What is the Boundary Commission for England?

1 The Boundary Commission for England (BCE) is an independent and impartial non-departmental public body which is required to review Parliamentary constituency boundaries in England. We conduct a review of all the constituencies in England every five years. Our role is to make recommendations to Parliament for new constituency boundaries.

2 The Chair of the Commission is the Speaker of the House of Commons, but by convention he does not participate in the review. The current Deputy Chair, Mrs Justice Patterson, and two further Commissioners, take decisions on proposals and recommendations for new constituency boundaries. Further information about the Commissioners can be found on our website.¹

You can find further information on our website, at www.bce2018.org.uk. You can also contact us with any general enquiries by emailing information@boundarycommissionengland.gov.uk, or by calling 020 7276 1102.

¹ At www.bce2018.org.uk

2 Background to the 2018 Review

3 We are currently conducting a review of Parliamentary constituency boundaries on the basis of rules set by Parliament in 2011.² These rules require us to reduce the number of constituencies in the UK and make more equal the number of electors in each constituency. This report covers only the work of the Boundary Commission for England (there are separate Commissions for Northern Ireland, Scotland, and Wales) and, in particular, introduces our initial proposals for the West Midlands.

4 The rules set out in the legislation state that there will be 600 Parliamentary constituencies covering the UK – a reduction of 50 from the current number. This means that the number of constituencies in England must be reduced from 533 to 501. There are also other rules that the Commission has regard to when conducting the review – a full set of the rules can be found in our *Guide to the 2018 Review*³ published in summer 2016, but they are also summarised later in this chapter. Most significantly, the rules require every constituency we recommend (with the exception of two covering the Isle of Wight) to contain no fewer than 71,031 electors and no more than 78,507.

5 This is a significant change to the old rules under which Parliamentary boundary reviews took place, in which achieving as close to the average number of electors in each constituency was an aim, but there was no statutory fixed permissible range. For example, in England, existing constituencies (drawn under the previous rules) currently range from 54,232 to 105,448 electors. Furthermore, the current constituencies were constructed under the last completed review, which relied on the data contained in the electoral registers for 2000 and applied the earlier version of the rules. Achieving a more even distribution of electors in every constituency across England, together with the reduction in the total number of constituencies, means that a significant amount of change to the existing map of constituencies is inevitable.

6 Our *Guide to the 2018 Review* contains further detailed background information, and explains all the policies and procedures that we are following in conducting the review. We encourage anyone wishing to be involved in the review to read this document, which will give them a greater understanding of the rules and constraints placed on the Commission, especially if they are intending to comment on our initial proposals.

² The Parliamentary Voting System and Constituencies Act 2011, available at www.legislation.gov.uk/ukpga/2011/1/contents

³ Available at www.bce2018.org.uk and at all places of deposit

The rules in the legislation

7 As well as the primary rule that constituencies must have no fewer than 71,031 electors and no more than 78,507, the legislation also states that, when deciding on boundaries, the Commission may also take into account:

- special geographical considerations, including in particular the size, shape and accessibility of a constituency;
- local government boundaries as they existed on 7 May 2015;
- boundaries of existing constituencies; and
- any local ties that would be broken by changes in constituencies.

8 In addition, in relation to local government boundaries in particular, it should be noted that we are obliged to take into account local government boundaries as they existed in May 2015, rather than any subsequent changes that may have been made (or are due to be made). Our initial proposals for the West Midlands (and the accompanying maps) are therefore based on local government boundaries as they existed in May 2015. Our *Guide to the 2018 Review* outlines further our policy on how, and to what extent, we take into account local government boundaries. We have used the wards as at May 2015 of unitary authorities, and borough and district councils (in areas where there is also a county council) as the basic building blocks for our proposals.

9 Although the first review under the new rules will unavoidably result in significant change, we have also taken into account the boundaries of existing constituencies so far as we can. We have tried to retain existing constituencies as part of our initial proposals wherever possible, as long as the other factors can also be satisfied. This, however, has proved difficult. Our initial proposals retain just under 12% of the existing constituencies in the West Midlands – the remainder are new constituencies (although in a number of cases we have been able to limit the changes to existing constituencies, making only minor changes as necessary to enable us to comply with the rules).

10 Our proposals are based on the nine regions used for European elections (though it should be clear that our work has no effect on European electoral matters, nor is it affected by the recent referendum result). This report relates to the West Midlands. There are eight other separate reports containing our initial proposals for the other regions. You can find more details on our website. While this approach does not prevent anyone from making proposals to us that cross regional boundaries (for example, between the West Midlands and the East Midlands regions), very compelling reasons would need to be given to persuade the Commission to depart from the region-based approach. The Commission has previously consulted on the use of the regions as building blocks, and this was supported.

Timetable for our review

Stage one – development of initial proposals

11 We began this review in February 2016. We published electorate data from December 2015 for each ward, local government authority, and existing constituency. The electorate data were provided by local authorities and the Office for National Statistics. These are available on our website⁴ and are the data that must be used throughout the remainder of the review process. The Commission has since then considered the factors outlined above and drawn up the initial proposals. We published our initial proposals for consultation for each of England's nine regions on 13 September 2016.

12 We ask people to be aware that, in publishing our initial proposals, we do so without suggesting that they are in some way definitive, or that they provide the 'right answer' – they are our starting point for consulting on the changes. We have taken into account the existing constituencies, local government boundaries, and geographical features to produce a set of constituencies that are within the statutory electorate range and that we consider to be the best balance between those factors at this point. What we do not yet have is evidence and intelligence of how our proposals reflect or break local community ties. One of the most important purposes of the consultation period is to seek evidence that will enable us to review our initial proposals.

Stage two – consultation on initial proposals

13 We are consulting on our initial proposals for 12 weeks, until 5 December 2016. Chapter 4 outlines how you can contribute during the consultation period. We are also hosting four public hearings in the West Midlands, at which people can give their views direct to one of our Assistant Commissioners. Once the consultation has closed, the Commission will collate all the responses received, including records of the public hearings.

Stage three – consultation on representations received

14 We are required to publish all the responses we receive on our initial proposals. This publication will mark the start of a four-week 'secondary consultation' period, likely to take place in spring 2017. The purpose of the secondary consultation is for people to see what others have said in response to our initial proposals, and to make comments on their views, for example by countering an argument, or by supporting and reinforcing what others have said. You will be able to see all the comments on our website, and use the site to give us your views on what others have said.

⁴ At www.bce2018.org.uk

Stage four – development and publication of revised proposals

15 Once we have all the representations and comments from both the initial and secondary consultation periods, the Commission will analyse those representations and decide whether changes should be made to the initial proposals. If we decide that the evidence presented to us persuades us to change our initial proposals, then we must publish our revised proposals for the areas concerned, and consult on them for a further period of eight weeks. This is likely to be towards the end of 2017. When we consult on our revised proposals, there will be no further public hearings, nor will there be a repeat of the four-week period for commenting on the representations of others. You will be able to see all our revised proposals, and give us your views on them, on our website.

Stage five – development and publication of the final report and recommendations

16 Finally, following the consultation on revised proposals, we will consider all the evidence received at this stage, and throughout the review, before determining our final recommendations. The recommendations will be set out in a published report to the Government, who will present it, without amendment, to Parliament on our behalf. The legislation states that we must report to the Government in September 2018. Further details about what the Government and Parliament then do with our recommendations are contained in our *Guide to the 2018 Review*.

17 Throughout each consultation we will be taking all reasonable steps to publicise our proposals, so that as many people as possible are aware of the consultation and can take the opportunity to contribute to our review of constituencies.

3 Initial proposals for the West Midlands

18 The West Midlands comprises the counties of Staffordshire, Warwickshire, West Midlands, and Worcestershire (which are covered by a mix of district and county councils, and unitary authorities), and the unitary authorities of Herefordshire, Shropshire, and Telford and Wrekin.

19 The region currently has 59 constituencies. Of these, only 15 constituencies have electorates within 5% of the electoral quota. The electorates of 43 constituencies fall below the 5% limit, while the electorate of one falls above the upper limit. Our initial proposals for the West Midlands are for 53 constituencies, a reduction of six.

20 In seeking to produce initial proposals for the region in which 53 whole constituencies, each with an electorate within 5% of the electoral quota, could be proposed, we first considered whether, and how, the local authority areas could usefully be grouped into sub-regions. We were mindful of seeking to respect, where we could, the external boundaries of local authorities. Our approach when grouping local authority areas together in sub-regions was based on trying to respect county boundaries wherever possible and on achieving (where we could) obvious practical groupings such as those dictated in some part by the geography of the area.

21 Our division of the West Midlands region into sub-regions is a purely practical approach. We welcome counter-proposals from respondents to our consultation, based on other groupings of counties and unitary authorities, if the statutory factors can be better reflected in those counter-proposals.

22 The electorate of Staffordshire, including the electorate of the City of Stoke-on-Trent, at just over 815,000 allowed us to develop a proposal in which 11 constituencies are allocated to this sub-region.

23 If considered on its own, the former Metropolitan County of West Midlands, which has an electorate of just under 1.863 million, would result in the allocation of 24.91 constituencies, which could be rounded up to 25. However, we noted that formulating a pattern of constituencies on this allocation would still be difficult to achieve given the very large electoral size of the wards.

24 The County of Warwickshire has just over 401,000 electors. It is not possible to develop proposals in which either five or six whole constituencies, each with electorates within 5% of the electoral quota, are contained within the county boundary. We considered pairing Warwickshire with the West Midlands and allocating 30 constituencies, which is four fewer than at present, but considered that, at this stage, this would not provide the best reflection of the rules we work to in this sub-region.

25 The electorates of Herefordshire, Worcestershire, and Telford and Wrekin are such that it is not possible to allocate a whole number of constituencies with electorates within 5% of the electoral quota to each. Shropshire has just under 230,000 electors, which would allow us to allocate three constituencies, but we considered that it was necessary to pair it with the neighbouring authorities of Herefordshire, and Telford and Wrekin to allow us to create constituencies across the whole

of the region with electorates within 5% of the electoral quota in each. We considered grouping them in one sub-region and allocating 12 constituencies, which is one fewer than at present, but considered that, at this stage, this would not provide the best reflection of the rules we work to in this sub-region.

26 We decided to group all of the counties of Herefordshire, Shropshire, Warwickshire, West Midlands, and Worcestershire in one sub-region with a total electorate of just under 3.174 million, to which we allocated 42 constituencies, which is five fewer than at present. One constituency crosses the county boundary between Herefordshire and Shropshire, one constituency crosses the county boundary between Herefordshire and Worcestershire, one constituency crosses the county boundary between Warwickshire and Worcestershire, and one constituency crosses the county boundary between Warwickshire and West Midlands.

27 All of our proposed constituencies covering the West Midlands contain whole wards. We considered an alternative that would divide a number of wards in the West Midlands county, but we decided that it was not necessary to breach our stated policy of using whole wards. However, we would welcome evidence on whether an alternative configuration of constituencies could be formulated that was not based on whole wards, bearing in mind our policy of preferring to build constituencies with whole wards.

28 The use of the term ‘ward’ throughout this document should be taken to mean electoral division in reference to the county unitary authority of Shropshire.

Initial proposals for the Staffordshire and Stoke-on-Trent sub-region

29 There are currently 12 constituencies in this sub-region, four of which (Burton, Cannock Chase, Lichfield, and South Staffordshire) have electorates within 5% of the electoral quota. The remaining eight constituencies have electorates below 5% of the electoral quota.

30 We considered whether we could leave unchanged any of the existing constituencies that have an electorate within 5% of the electoral quota. In developing proposals in which all the constituency electorates are within 5% of the electoral quota, we propose to keep the three constituencies of Burton, Cannock Chase, and South Staffordshire unchanged. We propose to allocate 11 constituencies to this sub-region, a reduction of one from the current arrangement.

31 We propose to extend the existing Tamworth constituency to include the whole of the divided Lichfield district ward of Whittington & Streethay within the Tamworth constituency. We noted that this change resulted in the electorate of the existing Lichfield constituency falling below 5% of the electoral quota, even after including the whole of the Lichfield district ward of Hammerwich with Wall in the Lichfield constituency. We therefore propose to include the Stafford borough ward of Haywood & Hixon in the Lichfield constituency.

32 We propose that the existing Stafford constituency be extended to include the whole of the two divided Stafford borough wards of Milwich, and Seighford & Church Eaton, together with the Stafford borough ward of Gnosall & Woodseaves from the existing Stone constituency.

33 The electorate of the Staffordshire Moorlands district allowed us to propose a constituency that contains the whole of the Staffordshire Moorlands district, and no wards from any other district, by including five wards from the existing Stone constituency. We propose that the five Newcastle-under-Lyme wards that form Kidsgrove Town Council should be included in a Newcastle-under-Lyme constituency together with 15 Newcastle-under-Lyme borough wards.

34 The electorate of the City of Stoke-on-Trent is too small to allow for three whole constituencies and too large for two whole constituencies to be created within its boundary. We propose a Stoke-on-Trent North constituency that contains 14 wards from the north of the city. We also propose a Stoke-on-Trent South constituency that contains 18 wards from the south and east of the city.

35 We propose that a new West Staffordshire constituency be created that includes the remaining four wards from the Newcastle-under-Lyme borough, the remaining six wards from the Stafford borough, and the remaining five wards from the City of Stoke-on-Trent.

Initial proposals for the Herefordshire, Shropshire, Telford and Wrekin, Warwickshire, West Midlands, and Worcestershire sub-region

36 There are currently 47 constituencies in this sub-region. Only 11 of these constituencies have electorates within 5% of the electoral quota; the electorate of one constituency falls above the 5% limit; and the electorates of the remaining 35 fall below the 5% limit. Our initial proposals allocate 42 constituencies to the sub-region, a reduction of five from the current arrangement.

37 We considered whether we could leave unchanged any of the 11 constituencies that have electorates within 5% of the electoral quota. However, in order to develop proposals in which all the constituency electorates are within 5% of the electoral quota, and to facilitate the reduction in allocated constituencies by five, it was necessary to alter the boundaries of seven of the 11 constituencies.

38 We propose to include the two North Warwickshire borough wards of Arley and Whitacre, and Hartshill in the North Warwickshire constituency, thereby uniting the whole of the North Warwickshire district in one constituency. We also propose to extend the Nuneaton constituency to include the Nuneaton and Bedworth borough ward of Bulkington, and the three Rugby borough wards of Revel and Binley Woods, Wolston and the Lawfords, and Wolvey and Shilton. We noted that it was not possible to include the town of Kenilworth in a constituency with the whole of the town of Rugby. Therefore we propose to extend the Rugby

constituency to include seven wards of the Stratford on Avon district, including the town of Southam, in a constituency called Rugby and Southam.

39 We considered whether the town of Kenilworth should be joined in a constituency with other wards from the Warwick district, or with wards from the City of Coventry. We decided that Kenilworth should be part of a Warwickshire constituency, and therefore propose a constituency named Kenilworth and Leamington that contains 17 Warwick district wards and is based on the towns of Kenilworth and Royal Leamington Spa. We also propose that the five remaining Warwick district wards, including the town of Warwick, be included in a constituency with 21 wards from the Stratford-on-Avon district, including the town of Stratford-upon-Avon, in a constituency called Warwick and Stratford-on-Avon.

40 We propose to include seven wards from the south of the Stratford-on-Avon district in a constituency with 21 Wychavon district wards in a cross-county boundary constituency called Evesham and South Warwickshire. We noted that this would mean that the existing West Worcestershire constituency, which has an electorate within 5% of the electoral quota, has been altered, but we considered that this change was necessary to ensure that all of the proposed constituency electorates were within 5% of the electoral quota.

41 We noted that the electorate of the existing Worcester constituency was below 5% of the electoral quota. We propose to extend the Worcester constituency by including the two Wychavon district wards of Drakes Broughton, and Norton and Whittington. While only one additional ward

is required, we have included two to ensure that all of the proposed constituency electorates within the sub-region are within 5% of the electoral quota.

42 We noted that the existing Bromsgrove constituency has an electorate within 5% of the electoral quota. We also noted that the neighbouring Redditch constituency has an electorate below 5% of the electoral quota and needed to be extended. We propose to include eight Bromsgrove district wards, including the towns of Alvechurch and Wythall, in a Redditch constituency with the whole of Redditch borough. We also propose that the remaining 22 Bromsgrove district wards be included in a constituency with seven Wychavon district wards, including the town of Droitwich, in a constituency called Bromsgrove and Droitwich.

43 We noted that the existing Wyre Forest constituency has an electorate within 5% of the electoral quota. In order to create constituencies with electorates within 5% of the electoral quota across the sub-region, we propose to include the Wychavon district ward of Hartlebury in the Wyre Forest constituency.

44 We propose to extend the existing Hereford and South Herefordshire constituency to include the three Herefordshire district wards of Backbury, Credenhill, and Hagley, from the existing North Herefordshire constituency, which are all close to the City of Hereford. We propose that seven wards in the north-east of Herefordshire, including the towns of Ledbury and Bromyard, be included in a cross-county boundary constituency with the whole of Malvern Hills district, and the Wychavon district ward of Ombersley.

45 We propose a cross-county boundary constituency called Ludlow and Leominster containing 15 wards from Herefordshire and 11 wards from Shropshire. This is a geographically large constituency, but we noted that there are strong road links between the two towns along the A49. We considered whether we could leave the existing North Shropshire, and Shrewsbury and Atcham constituencies unchanged, as both have an electorate within 5% of the electoral quota. We propose not to make any change to the North Shropshire constituency, but we propose to include the Shropshire county ward of Chirbury and Worthen in a renamed Shrewsbury constituency, which loses Atcham because the constituency is no longer based on the borough of that name, which no longer exists.

46 We noted that the electorate of the existing Telford constituency is below 5% of the electoral quota and we propose to extend it to include the two Telford and Wrekin district wards of Donnington, and Hadley & Leegomery, which are in the existing The Wrekin constituency. This change brings the Telford constituency to within 5% of the electoral quota. We also propose to extend the existing The Wrekin constituency by including six Shropshire county wards, from the existing Ludlow constituency, including the towns of Bridgnorth, Broseley, and Much Wenlock, in a constituency called Bridgnorth, Wellington and The Wrekin.

47 In the West Midlands county, we noted that, while it should be possible to create the required number of constituencies without creating any cross-county boundary constituencies, the size

of the ward electorates, particularly in Birmingham and Dudley, means that this is not a straightforward task. We also noted that it was not always possible to create constituencies wholly within a metropolitan borough, and that it would be necessary to propose constituencies that contained parts of two neighbouring boroughs. However, we have not proposed any constituency that contains parts of three metropolitan boroughs.

48 We noted that the electorate of the City of Coventry is too small to continue to be allocated three whole constituencies. We propose that the existing Coventry North East constituency be left unchanged. We also propose to add the two Solihull borough wards of Knowle and Meriden to a Coventry West and Meriden constituency that also contains five Coventry city wards. This change results in the remaining seven Coventry city wards forming a Coventry South constituency.

49 While it is possible to create two constituencies wholly within Solihull borough, we decided not to do so. We propose a constituency in the north of the borough that contains five wards from the Chelmsley Wood part of the existing Meriden constituency, two wards (Elmdon and Lyndon) from the existing Solihull constituency, and the Birmingham city ward of Sheldon. We propose that this constituency be called Chelmsley Wood and Solihull North. We propose that the remaining nine wards in the south of the borough form a cross-county boundary constituency together with the Stratford on Avon district ward of Tanworth-in-Arden. We propose that the constituency be called Shirley and Solihull South.

50 In the City of Birmingham, we propose not to make any changes to the two existing constituencies of Birmingham, Hodge Hill, and Sutton Coldfield. We noted that the existing Birmingham, Hall Green constituency also has an electorate within 5% of the electoral quota, but we have had to make changes to that constituency as a result of changes required to neighbouring constituencies. None of the other existing constituencies within the West Midlands county has an electorate within 5% of the electoral quota. We propose 11 constituencies that contain Birmingham city wards, five of which are wholly based within the city boundary. Of these 11 constituencies, two are unchanged and five contain three of the four wards from an existing constituency.

51 Our proposed Birmingham Erdington constituency contains the three Birmingham city wards of Erdington, Kingstanding, and Stockland Green from the existing Birmingham, Erdington constituency, together with the Birmingham city ward of Oscott, and the Walsall borough ward of Pheasey Park Farm.

52 Our proposed Birmingham Perry Barr constituency contains the three Birmingham city wards of Handsworth Wood, Lozells and East Handsworth, and Perry Barr, together with the Birmingham city ward of Aston, and the Sandwell borough ward of Newton.

53 Our proposed Birmingham Yardley constituency contains the three Birmingham city wards of Acocks Green, South Yardley, and Stechford and Yardley North from the existing Birmingham, Yardley constituency, together with the Birmingham city ward of Hall Green.

54 Our proposed Birmingham Ladywood constituency contains the three Birmingham city wards of Ladywood, Nechells, and Soho from the existing Birmingham, Ladywood constituency, together with the Birmingham city ward of Tyburn, and the Sandwell borough ward of Soho and Victoria.

55 Our proposed Birmingham Edgbaston constituency contains the three Birmingham city wards of Edgbaston, Harborne, and Quinton from the existing Birmingham, Edgbaston constituency, together with the Birmingham city ward of Sparkbrook, and the Sandwell borough ward of Abbey.

56 Our proposed Birmingham Brandwood constituency contains the four Birmingham city wards of Billesley, Brandwood, Kings Norton, and Springfield. Our proposed Birmingham Northfield constituency contains the four Birmingham city wards of Bournville, Longbridge, Moseley and Kings Heath, and Northfield.

57 Our proposed Birmingham Selly Oak and Halesowen constituency contains the three Birmingham city wards of Bartley Green, Selly Oak, and Weoley, together with the three Dudley borough wards of Belle Vale, Halesowen North, and Halesowen South.

58 In the Borough of Walsall, we propose that the existing Aldridge-Brownhills constituency be extended to include the two Walsall borough wards of Bloxwich East, and Bloxwich West, from the existing Walsall North constituency. We propose that the constituency be called Aldridge, Brownhills and Bloxwich. We also propose that the Walsall borough wards of Birchills

Leamore, and Blakenall, from the existing Walsall North constituency, be added to the remaining six wards from the existing Walsall South constituency. We propose that the constituency be called Walsall Central.

59 In the City of Wolverhampton, we propose a Wolverhampton West constituency that contains six of the seven wards from the existing Wolverhampton South West constituency, together with the two Wolverhampton city wards of Bushbury North, and Oxley from the existing Wolverhampton North East constituency. Our proposed Wednesfield and Willenhall constituency contains three wards from existing Walsall North constituency, five wards from the existing Wolverhampton North East constituency, and one ward from the existing Wolverhampton South West constituency.

60 Our proposed Wolverhampton South and Coseley constituency contains five Wolverhampton city wards and one Dudley borough ward from the existing Wolverhampton South East constituency, together with the two Dudley borough wards of Sedgley, and Upper Gornal and Woodsetton, from the existing Dudley North constituency.

61 In the Borough of Dudley, our proposed Dudley West constituency contains four wards from the existing Dudley South constituency, the Gornal ward from the existing Dudley North constituency, and the Quarry Bank and Dudley Wood ward from the existing Stourbridge constituency. Our proposed Stourbridge constituency contains six wards from the existing Stourbridge constituency, the Brierley Hill ward from the existing Dudley South constituency,

and the Hayley Green and Cradley South ward from the existing Halesowen and Rowley Regis constituency.

62 Our proposed Dudley East and Tipton constituency contains three Dudley borough wards from the existing Dudley North constituency, four Sandwell borough wards from the existing West Bromwich West constituency, and one Sandwell borough ward from the existing West Bromwich East constituency.

63 In the Borough of Sandwell, our proposed Warley constituency contains eight Sandwell borough wards, four from the existing Warley constituency, three from the existing Halesowen and Rowley Regis constituency, and one from the existing West Bromwich West constituency. Our proposed West Bromwich constituency contains eight Sandwell borough wards, five from the existing West Bromwich East constituency, two from the existing West Bromwich West constituency, and one from the existing Warley constituency.

4 How to have your say

64 We are consulting on our initial proposals for a 12-week period, from 13 September 2016 to 5 December 2016. We encourage everyone to give us their views on our proposals for their area – the more public views we hear and the more local information that is provided, the more informed our decisions will be when analysing all the views we have received.

65 On our interactive consultation website, at www.bce2018.org.uk, you can see what constituency you will be in under our proposals, and compare it with your existing constituency and local government boundaries. You can also easily submit your views on our proposals.

66 When making comments on our initial proposals, we ask people to bear in mind the tight constraints placed on the Commission by the rules set by Parliament, discussed in chapter 2 and in our *Guide to the 2018 Review*. Most importantly, in the West Midlands:

- we cannot recommend constituencies that have electorates that contain more than 78,507 or fewer than 71,031 electors;
- we are basing our initial proposals on local government ward boundaries (from May 2015) as the building blocks of constituencies – our view is that, in the absence of exceptional and compelling circumstances, it would not be appropriate to divide wards in cases where it is possible to construct constituencies that meet the electorate rules without doing so; and

- we have constructed constituencies within regions, so as not to cross regional boundaries – compelling reasons would need to be given to persuade us that we should depart from this approach.

67 These issues mean that we encourage people who are making a comment about their local area to bear in mind any knock-on effects that might result from their suggestions. The Commission must look at the recommendations for new constituencies across the whole region (and, indeed, across England). What may be a better solution for one location may have undesirable consequences for others. We therefore ask everyone wishing to respond to our consultation to bear in mind the impact of their counter-proposals on neighbouring constituencies, and on those further afield across the region.

How can you give us your views?

68 Views can be given to the Commission either in writing or in person (oral representations). We encourage everyone who wishes to comment on our proposals in writing to do so through our interactive consultation website, at www.bce2018.org.uk – you will find all the details you need and be able to comment directly through the website. We also welcome oral representations at one of a series of public hearings we are conducting during the consultation period. People are welcome to both attend a hearing and submit comments through our website if they choose to.

Written representations

69 As stated above, we strongly encourage everyone to make use of our consultation website, at www.bce2018.org.uk, when responding to our consultation. The website allows you to explore the map of our proposals and get further data, including the electorate sizes of every ward and polling district. You can also upload text or data files you may have previously prepared setting out your views.

70 We encourage everyone, before submitting a representation, to read our approach to protecting and using your personal details (available at www.bce2018.org.uk). In particular, respondents should remember that we

are obliged to publish all the comments we receive on our initial proposals. As this is a public consultation, we publish respondents' names and addresses, alongside their comments.

Public hearings

71 The Commission will be hosting public hearings across England. In the West Midlands we will be hosting four public hearings during the consultation period. Our website (www.bce2018.org.uk) has more details of these hearings, and an opportunity to register to attend and give us your views in person. The table below shows the locations and dates of the hearings in the West Midlands.

Town	Location	Dates
Birmingham	Council House, Victoria Square, Birmingham B1 1BB	Thursday 3 – Friday 4 November 2016
Shrewsbury	Prince Rupert Hotel, Butcher Row, Shrewsbury SY1 1UQ	Monday 7 – Tuesday 8 November 2016
Royal Leamington Spa	Royal Pump Rooms, The Parade, Leamington Spa CV32 4AA	Thursday 10 – Friday 11 November 2016
Stafford	County Buildings, Martin Street, Stafford ST16 2LH	Monday 14 – Tuesday 15 November 2016

72 The purpose of the hearings is for people to have an opportunity to put their views on our proposals directly to an Assistant Commissioner who will chair the hearings and subsequently assist the Commission in the analysis of all the evidence received in the region. The hearings differ from the way we used to conduct ‘local inquiries’ in past reviews – these were much more judicial in style, and people were allowed to cross-examine each other. The legislation that Parliament introduced specifically rules out such inquiries, specifying instead that we host ‘public hearings’, which are intended purely as a way for people to make representations orally, directly to representatives of the Commission, as well as to provide an opportunity for the Commission to explain its proposals.

73 It is important to stress that all representations, whether they have been made through our website, in person at a hearing, or sent to us in writing, will be given equal consideration by the Commission. Therefore it does not matter if you are unable to attend or speak at a public hearing – even after the last public hearing in the West Midlands has finished, you will still have until 5 December 2016 to submit your views to us.

74 You can find more information about public hearings, and can register to attend, on our website at www.bce2018.org.uk, or by phoning 020 7276 1102.

What do we want views on?

75 We would like particularly to ask two things of people responding to our consultation. First, if you support our proposals, please tell us so. Past experience suggests that too often people who are happy with our proposals do not respond in support, while those who object to them do respond to make their points. That can give a rather distorted view of the balance of public support or objection to proposals, and those who in fact support our initial proposals may then be disappointed if those proposals are subsequently revised in light of the consultation responses. Second, if you are considering objecting to our proposals, do please use the resources (such as maps and electorate figures) available on our website and at the places of deposit to put forward counter-proposals which are in accordance with the rules to which we are working.

76 Above all, however, we encourage everyone to have their say on our initial proposals and, in doing so, to become involved in drawing the map of new Parliamentary constituencies. The more views and information we get as a result of our initial proposals and through the subsequent consultation phases, the more informed our consideration in developing those proposals will be, and the better we will be able to reflect the public’s views in the final recommendations we present in 2018.

Annex A: Initial proposals for constituencies, including wards and electorates

Constituency	Ward	District/borough/city/county	Electorate
1. Aldridge, Brownhills and Bloxwich BC			76,572
	Aldridge Central and South	Walsall	10,770
	Aldridge North and Walsall Wood	Walsall	9,918
	Bloxwich East	Walsall	8,672
	Bloxwich West	Walsall	9,541
	Brownhills	Walsall	9,218
	Pelsall	Walsall	8,758
	Rushall-Shelfield	Walsall	9,030
	Streetly	Walsall	10,665
2. Birmingham Brandwood BC			71,357
	Billesley	Birmingham	18,277
	Brandwood	Birmingham	17,728
	Kings Norton	Birmingham	16,097
	Springfield	Birmingham	19,255
3. Birmingham Edgbaston BC			72,215
	Edgbaston	Birmingham	14,069
	Harborne	Birmingham	15,548
	Quinton	Birmingham	16,410
	Sparkbrook	Birmingham	18,323
	Abbey	Sandwell	7,865
4. Birmingham Erdington BC			72,786
	Erdington	Birmingham	15,478
	Kingstanding	Birmingham	16,007
	Oscott	Birmingham	17,483
	Stockland Green	Birmingham	15,036
	Pheasey Park Farm	Walsall	8,782
5. Birmingham Hodge Hill BC			73,173
	Bordesley Green	Birmingham	19,100
	Hodge Hill	Birmingham	17,292
	Shard End	Birmingham	17,647
	Washwood Heath	Birmingham	19,134
6. Birmingham Ladywood BC			73,050
	Ladywood	Birmingham	15,042
	Nechells	Birmingham	17,731
	Soho	Birmingham	15,513
	Tyburn	Birmingham	16,031
	Soho and Victoria	Sandwell	8,733
7. Birmingham Northfield BC			72,519
	Bournville	Birmingham	18,449
	Longbridge	Birmingham	17,839
	Moseley and Kings Heath	Birmingham	17,629
	Northfield	Birmingham	18,602
8. Birmingham Perry Barr BC			76,201
	Aston	Birmingham	17,430
	Handsworth Wood	Birmingham	17,301
	Lozells and East Handsworth	Birmingham	17,558
	Perry Barr	Birmingham	15,368
	Newton	Sandwell	8,544

Constituency	Ward	District/borough/city/county	Electorate
9. Birmingham Selly Oak and Halesowen BC			77,485
	Bartley Green	Birmingham	16,768
	Selly Oak	Birmingham	14,006
	Weoley	Birmingham	16,839
	Belle Vale	Dudley	10,494
	Halesowen North	Dudley	9,468
	Halesowen South	Dudley	9,910
10. Birmingham Yardley BC			72,864
	Acocks Green	Birmingham	18,285
	Hall Green	Birmingham	18,731
	South Yardley	Birmingham	18,756
	Stechford and Yardley North	Birmingham	17,092
11. Bridgnorth, Wellington and The Wrekin CC			77,256
	Albrighton	Shropshire	3,549
	Alveley and Claverley	Shropshire	3,338
	Bridgnorth East and Astley Abbots	Shropshire	5,322
	Bridgnorth West and Tasley	Shropshire	5,433
	Broseley	Shropshire	3,545
	Much Wenlock	Shropshire	3,406
	Shifnal North	Shropshire	3,533
	Shifnal South and Cosford	Shropshire	3,645
	Worfield	Shropshire	2,944
	Admaston & Bratton	Telford and Wrekin	2,208
	Apley Castle	Telford and Wrekin	2,376
	Arleston	Telford and Wrekin	2,137
	Church Aston & Lilleshall	Telford and Wrekin	2,381
	College	Telford and Wrekin	2,134
	Dothill	Telford and Wrekin	2,141
	Edgmond & Ercall Magna	Telford and Wrekin	4,549
	Ercall	Telford and Wrekin	2,347
	Haygate	Telford and Wrekin	2,169
	Muxton	Telford and Wrekin	4,977
	Newport North & West	Telford and Wrekin	4,431
	Newport South & East	Telford and Wrekin	3,897
	Park	Telford and Wrekin	2,161
	Shawbirch	Telford and Wrekin	2,323
	Wrockwardine	Telford and Wrekin	2,310
12. Bromsgrove and Droitwich CC			78,121
	Aston Fields	Bromsgrove	2,492
	Avoncroft	Bromsgrove	2,424
	Belbroughton & Romsley	Bromsgrove	5,193
	Bromsgrove Central	Bromsgrove	2,363
	Catshill North	Bromsgrove	2,208
	Catshill South	Bromsgrove	2,174
	Charford	Bromsgrove	2,318
	Cofton	Bromsgrove	2,142
	Hagley East	Bromsgrove	2,044
	Hagley West	Bromsgrove	2,680
	Hill Top	Bromsgrove	1,778
	Lickey Hills	Bromsgrove	2,242
	Lowes Hill	Bromsgrove	2,565
	Marlbrook	Bromsgrove	2,395
	Norton	Bromsgrove	2,058
	Perryfields	Bromsgrove	1,385
	Rock Hill	Bromsgrove	2,414
	Rubery North	Bromsgrove	2,507
	Rubery South	Bromsgrove	2,563
	Sanders Park	Bromsgrove	2,671
	Sidemoor	Bromsgrove	2,530
	Slideslow	Bromsgrove	2,635
	Dodderhill	Wychavon	2,129

Constituency	Ward	District/borough/city/county	Electorate
	Droitwich Central	Wychavon	1,930
	Droitwich East	Wychavon	4,257
	Droitwich South East	Wychavon	4,185
	Droitwich South West	Wychavon	3,862
	Droitwich West	Wychavon	3,747
	Lovett and North Claines	Wychavon	4,230
13. Burton CC			72,542
	Abbey	East Staffordshire	2,276
	Anglesey	East Staffordshire	3,647
	Branston	East Staffordshire	5,409
	Brizlincote	East Staffordshire	4,165
	Burton	East Staffordshire	1,883
	Churnet	East Staffordshire	2,141
	Crown	East Staffordshire	2,049
	Eton Park	East Staffordshire	4,016
	Heath	East Staffordshire	4,605
	Horninglow	East Staffordshire	6,070
	Rolleston on Dove	East Staffordshire	2,700
	Shobnall	East Staffordshire	4,565
	Stapenhill	East Staffordshire	5,538
	Stretton	East Staffordshire	6,115
	Town	East Staffordshire	5,119
	Tutbury and Outwoods	East Staffordshire	4,741
	Weaver	East Staffordshire	1,645
	Winshill	East Staffordshire	5,858
14. Cannock Chase CC			73,470
	Brereton and Ravenhill	Cannock Chase	5,028
	Cannock East	Cannock Chase	5,128
	Cannock North	Cannock Chase	5,447
	Cannock South	Cannock Chase	5,734
	Cannock West	Cannock Chase	5,653
	Etching Hill and The Heath	Cannock Chase	5,178
	Hagley	Cannock Chase	3,308
	Hawks Green	Cannock Chase	5,511
	Heath Hayes East and Wimblebury	Cannock Chase	4,825
	Hednesford Green Heath	Cannock Chase	3,845
	Hednesford North	Cannock Chase	5,220
	Hednesford South	Cannock Chase	4,147
	Norton Canes	Cannock Chase	5,647
	Rawsley	Cannock Chase	3,714
	Western Springs	Cannock Chase	5,085
15. Chelmsley Wood and Solihull North BC			77,455
	Sheldon	Birmingham	15,778
	Bickenhill	Solihull	8,941
	Castle Bromwich	Solihull	9,193
	Chelmsley Wood	Solihull	8,067
	Elmdon	Solihull	9,255
	Kingshurst and Fordbridge	Solihull	8,506
	Lyndon	Solihull	9,720
	Smith's Wood	Solihull	7,995
16. Coventry North East BC			72,135
	Foleshill	Coventry	10,419
	Henley	Coventry	12,310
	Longford	Coventry	12,538
	Lower Stoke	Coventry	13,029
	Upper Stoke	Coventry	11,520
	Wyken	Coventry	12,319

Constituency	Ward	District/borough/city/county	Electorate
17. Coventry South BC			77,914
	Binley and Willenhall	Coventry	11,588
	Cheylesmore	Coventry	11,308
	Earlsdon	Coventry	11,604
	Radford	Coventry	11,633
	Sherbourne	Coventry	11,136
	St. Michael's	Coventry	9,766
	Whoberley	Coventry	10,879
18. Coventry West and Meriden CC			77,586
	Bablake	Coventry	12,376
	Holbrook	Coventry	11,536
	Wainbody	Coventry	10,670
	Westwood	Coventry	12,244
	Woodlands	Coventry	13,156
	Knowle	Solihull	8,183
	Meriden	Solihull	9,421
19. Dudley East and Tipton BC			75,512
	Castle and Priory	Dudley	11,018
	St. James's	Dudley	9,842
	St. Thomas's	Dudley	9,781
	Great Bridge	Sandwell	9,166
	Greets Green and Lyng	Sandwell	8,042
	Oldbury	Sandwell	9,188
	Princes End	Sandwell	8,856
	Tipton Green	Sandwell	9,619
20. Dudley West BC			71,054
	Brockmoor and Pensnett	Dudley	9,585
	Gornal	Dudley	10,502
	Kingswinford North and Wall Heath	Dudley	10,108
	Kingswinford South	Dudley	10,272
	Netherton, Woodside and St. Andrews	Dudley	10,352
	Quarry Bank and Dudley Wood	Dudley	10,113
	Wordsley	Dudley	10,122
21. Evesham and South Warwickshire CC			78,036
	Brailes & Compton	Stratford-on-Avon	2,764
	Ettington	Stratford-on-Avon	2,703
	Quinton	Stratford-on-Avon	2,360
	Red Horse	Stratford-on-Avon	2,639
	Shipston North	Stratford-on-Avon	2,846
	Shipston South	Stratford-on-Avon	2,801
	Welford-on-Avon	Stratford-on-Avon	2,587
	Badsey	Wychavon	2,233
	Bengeworth	Wychavon	4,394
	Bowbrook	Wychavon	2,339
	Bredon	Wychavon	2,089
	Bretforton and Offenham	Wychavon	2,203
	Broadway and Wickhamford	Wychavon	3,818
	Eckington	Wychavon	2,215
	Elmley Castle and Somerville	Wychavon	2,015
	Evesham North	Wychavon	3,324
	Evesham South	Wychavon	3,732
	Fladbury	Wychavon	2,214
	Great Hampton	Wychavon	2,052
	Harvington and Norton	Wychavon	2,048
	Honeybourne and Pebworth	Wychavon	2,007
	Inkberrow	Wychavon	4,576
	Little Hampton	Wychavon	3,601
	Pershore	Wychavon	5,836
	Pinvin	Wychavon	2,309
	South Bredon Hill	Wychavon	1,913
	The Littletons	Wychavon	2,221
	Upton Snodsbury	Wychavon	2,197

Constituency	Ward	District/borough/city/county	Electorate
22. Hereford and South Herefordshire CC			77,370
	Aylestone Hill	Herefordshire	2,412
	Backbury	Herefordshire	2,242
	Belmont Rural	Herefordshire	2,505
	Birch	Herefordshire	2,370
	Bobblestock	Herefordshire	2,278
	Central	Herefordshire	2,159
	College	Herefordshire	2,679
	Credenhill	Herefordshire	2,276
	Dinedor Hill	Herefordshire	2,602
	Eign Hill	Herefordshire	2,574
	Golden Valley North	Herefordshire	2,386
	Golden Valley South	Herefordshire	2,546
	Greyfriars	Herefordshire	2,482
	Hagley	Herefordshire	2,752
	Hinton & Hunderton	Herefordshire	2,599
	Holmer	Herefordshire	2,599
	Kerne Bridge	Herefordshire	2,437
	Kings Acre	Herefordshire	2,537
	Llangarron	Herefordshire	2,671
	Newton Farm	Herefordshire	2,504
	Penyard	Herefordshire	2,631
	Red Hill	Herefordshire	2,757
	Ross East	Herefordshire	2,806
	Ross North	Herefordshire	2,541
	Ross West	Herefordshire	2,535
	Saxon Gate	Herefordshire	2,618
	Stoney Street	Herefordshire	2,603
	Tupsley	Herefordshire	2,489
	Whitecross	Herefordshire	2,463
	Widemarsh	Herefordshire	1,781
	Wormside	Herefordshire	2,536
23. Kenilworth and Leamington CC			75,011
	Abbey	Warwick	5,292
	Arden	Warwick	4,289
	Bishop's Tachbrook	Warwick	2,012
	Brunswick	Warwick	4,682
	Clarendon	Warwick	4,046
	Crown	Warwick	4,452
	Leam	Warwick	3,401
	Manor	Warwick	4,994
	Milverton	Warwick	4,407
	Myton & Heathcote	Warwick	3,804
	Newbold	Warwick	4,029
	Park Hill	Warwick	6,455
	Radford Semele	Warwick	2,065
	St. John's	Warwick	6,546
	Stoneleigh & Cubbington	Warwick	4,024
	Sydenham	Warwick	4,119
	Whitnash	Warwick	6,394
24. Lichfield CC			74,778
	Bagots	East Staffordshire	2,155
	Needwood	East Staffordshire	4,441
	Yoxall	East Staffordshire	2,159
	Alrewas & Fradley	Lichfield	4,510
	Armitage with Handsacre	Lichfield	5,693
	Boley Park	Lichfield	3,447
	Boney Hay & Central	Lichfield	5,065
	Chadsmead	Lichfield	3,304
	Chase Terrace	Lichfield	3,717
	Chasetown	Lichfield	2,640

Constituency	Ward	District/borough/city/county	Electorate
	Colton & the Ridwares	Lichfield	1,768
	Curborough	Lichfield	3,201
	Hammerwich with Wall	Lichfield	3,423
	Highfield	Lichfield	3,652
	Leomansley	Lichfield	4,879
	Longdon	Lichfield	1,694
	St. John's	Lichfield	4,407
	Stowe	Lichfield	4,725
	Summerfield & All Saints	Lichfield	4,850
	Haywood & Hixon	Stafford	5,048
25. Ludlow and Leominster CC			77,533
	Arrow	Herefordshire	2,798
	Bircher	Herefordshire	2,916
	Bromyard Bringsty	Herefordshire	2,548
	Bromyard West	Herefordshire	2,222
	Castle	Herefordshire	2,388
	Hampton	Herefordshire	2,666
	Kington	Herefordshire	2,445
	Leominster East	Herefordshire	2,544
	Leominster North & Rural	Herefordshire	2,832
	Leominster South	Herefordshire	2,465
	Leominster West	Herefordshire	1,997
	Mortimer	Herefordshire	2,542
	Queenswood	Herefordshire	2,556
	Sutton Walls	Herefordshire	2,392
	Weobley	Herefordshire	2,725
	Bishop's Castle	Shropshire	2,747
	Brown Clee	Shropshire	3,015
	Church Stretton and Craven Arms	Shropshire	7,141
	Clee	Shropshire	3,477
	Cleobury Mortimer	Shropshire	5,614
	Clun	Shropshire	3,014
	Corvedale	Shropshire	2,991
	Highley	Shropshire	2,574
	Ludlow East	Shropshire	2,935
	Ludlow North	Shropshire	2,942
	Ludlow South	Shropshire	3,047
26. Malvern and Ledbury CC			78,172
	Bishops Frome & Cradley	Herefordshire	2,433
	Hope End	Herefordshire	2,805
	Ledbury North	Herefordshire	2,436
	Ledbury South	Herefordshire	2,385
	Ledbury West	Herefordshire	2,479
	Old Gore	Herefordshire	2,424
	Three Crosses	Herefordshire	2,658
	Alfrick and Leigh	Malvern Hills	2,844
	Baldwin	Malvern Hills	1,654
	Broadheath	Malvern Hills	2,782
	Chase	Malvern Hills	4,648
	Dyson Perrins	Malvern Hills	3,330
	Hallow	Malvern Hills	1,488
	Kempsey	Malvern Hills	3,051
	Lindridge	Malvern Hills	1,846
	Link	Malvern Hills	4,825
	Longdon	Malvern Hills	1,673
	Martley	Malvern Hills	1,411
	Morton	Malvern Hills	1,684
	Pickersleigh	Malvern Hills	4,433
	Powick	Malvern Hills	3,058
	Priory	Malvern Hills	3,039
	Ripple	Malvern Hills	1,436
	Teme Valley	Malvern Hills	1,544

Constituency	Ward	District/borough/city/county	Electorate
	Tenbury	Malvern Hills	2,924
	Upton and Hanley	Malvern Hills	3,377
	Wells	Malvern Hills	2,630
	West	Malvern Hills	3,267
	Woodbury	Malvern Hills	1,662
	Ombersley	Wychavon	1,946
27. Newcastle-under-Lyme BC			73,174
	Bradwell	Newcastle-under-Lyme	4,655
	Butt Lane	Newcastle-under-Lyme	4,096
	Chesterton	Newcastle-under-Lyme	4,926
	Clayton	Newcastle-under-Lyme	3,123
	Cross Heath	Newcastle-under-Lyme	4,261
	Holditch	Newcastle-under-Lyme	3,201
	Keele	Newcastle-under-Lyme	1,220
	Kidsgrove	Newcastle-under-Lyme	4,811
	Knutton and Silverdale	Newcastle-under-Lyme	2,890
	May Bank	Newcastle-under-Lyme	4,643
	Newchapel	Newcastle-under-Lyme	2,679
	Porthill	Newcastle-under-Lyme	2,984
	Ravenscliffe	Newcastle-under-Lyme	3,065
	Seabridge	Newcastle-under-Lyme	4,362
	Silverdale and Parksite	Newcastle-under-Lyme	2,983
	Talke	Newcastle-under-Lyme	2,974
	Thistleberry	Newcastle-under-Lyme	4,628
	Town	Newcastle-under-Lyme	2,949
	Westlands	Newcastle-under-Lyme	4,377
	Wolstanton	Newcastle-under-Lyme	4,347
28. North Shropshire CC			77,768
	Cheswardine	Shropshire	3,135
	Ellesmere Urban	Shropshire	3,060
	Gobowen, Selattyn and Weston Rhyn	Shropshire	5,457
	Hodnet	Shropshire	2,780
	Llanymynech	Shropshire	3,291
	Market Drayton East	Shropshire	3,589
	Market Drayton West	Shropshire	6,500
	Oswestry East	Shropshire	6,665
	Oswestry South	Shropshire	3,082
	Oswestry West	Shropshire	2,599
	Prees	Shropshire	3,347
	Ruyton and Baschurch	Shropshire	2,992
	Shawbury	Shropshire	3,383
	St. Martin's	Shropshire	3,428
	St. Oswald	Shropshire	3,186
	The Meres	Shropshire	3,500
	Wem	Shropshire	6,233
	Whitchurch North	Shropshire	5,232
	Whitchurch South	Shropshire	3,146
	Whittington	Shropshire	3,163
29. North Warwickshire CC			74,124
	Arley and Whitacre	North Warwickshire	4,050
	Atherstone Central	North Warwickshire	2,728
	Atherstone North	North Warwickshire	2,659
	Atherstone South and Mancetter	North Warwickshire	2,768
	Baddesley and Grendon	North Warwickshire	3,063
	Coleshill North	North Warwickshire	2,468
	Coleshill South	North Warwickshire	2,698
	Curdworth	North Warwickshire	2,666
	Dordon	North Warwickshire	2,276
	Fillongley	North Warwickshire	2,643
	Hartshill	North Warwickshire	2,837

Constituency	Ward	District/borough/city/county	Electorate
	Hurley and Wood End	North Warwickshire	2,880
	Kingsbury	North Warwickshire	2,945
	Newton Regis and Warton	North Warwickshire	2,712
	Polesworth East	North Warwickshire	2,602
	Polesworth West	North Warwickshire	2,623
	Water Orton	North Warwickshire	2,721
	Bede	Nuneaton and Bedworth	4,910
	Exhall	Nuneaton and Bedworth	5,760
	Heath	Nuneaton and Bedworth	5,480
	Poplar	Nuneaton and Bedworth	5,449
	Slough	Nuneaton and Bedworth	5,186
30. Nuneaton CC			76,385
	Abbey	Nuneaton and Bedworth	5,583
	Arbury	Nuneaton and Bedworth	5,084
	Attleborough	Nuneaton and Bedworth	5,385
	Bar Pool	Nuneaton and Bedworth	5,160
	Bulkington	Nuneaton and Bedworth	4,916
	Camp Hill	Nuneaton and Bedworth	5,312
	Galley Common	Nuneaton and Bedworth	5,834
	Kingswood	Nuneaton and Bedworth	4,768
	St. Nicolas	Nuneaton and Bedworth	5,427
	Weddington	Nuneaton and Bedworth	5,748
	Wem Brook	Nuneaton and Bedworth	5,040
	Whitestone	Nuneaton and Bedworth	5,529
	Revel and Binley Woods	Rugby	5,170
	Wolston and the Lawfords	Rugby	5,439
	Wolvey and Shilton	Rugby	1,990
31. Redditch CC			77,756
	Alvechurch South	Bromsgrove	2,248
	Alvechurch Village	Bromsgrove	2,234
	Barnt Green & Hopwood	Bromsgrove	2,208
	Drakes Cross	Bromsgrove	2,489
	Hollywood	Bromsgrove	2,390
	Tardebigge	Bromsgrove	2,209
	Wythall East	Bromsgrove	2,344
	Wythall West	Bromsgrove	2,139
	Abbey	Redditch	4,213
	Astwood Bank and Feckenham	Redditch	4,596
	Batchley & Brockhill	Redditch	5,677
	Central	Redditch	4,015
	Church Hill	Redditch	5,654
	Crabbs Cross	Redditch	4,431
	Greenlands	Redditch	5,970
	Headless Cross and Oakenshaw	Redditch	6,588
	Lodge Park	Redditch	3,633
	Matchborough	Redditch	4,338
	West	Redditch	4,360
	Winyates	Redditch	6,020
32. Rugby and Southam CC			77,230
	Admirals and Cawston	Rugby	5,508
	Benn	Rugby	4,487
	Bilton	Rugby	5,000
	Clifton, Newton and Churchover	Rugby	1,683
	Coton and Boughton	Rugby	4,789
	Dunsmore	Rugby	5,761
	Eastlands	Rugby	5,099
	Hillmorton	Rugby	4,073
	Leam Valley	Rugby	1,918
	New Bilton	Rugby	4,476
	Newbold and Brownsover	Rugby	4,839
	Paddox	Rugby	5,396

Constituency	Ward	District/borough/city/county	Electorate
	Rokeby and Overslade	Rugby	5,559
	Bishop's Itchington	Stratford-on-Avon	2,771
	Harbury	Stratford-on-Avon	2,649
	Kineton	Stratford-on-Avon	2,720
	Long Itchington & Stockton	Stratford-on-Avon	2,949
	Napton & Fenny Compton	Stratford-on-Avon	2,548
	Southam North	Stratford-on-Avon	2,440
	Southam South	Stratford-on-Avon	2,565
33. Shirley and Solihull South BC			77,174
	Blythe	Solihull	9,760
	Dorridge and Hockley Heath	Solihull	8,686
	Olton	Solihull	9,528
	Shirley East	Solihull	8,610
	Shirley South	Solihull	9,519
	Shirley West	Solihull	9,108
	Silhill	Solihull	9,119
	St. Alphege	Solihull	10,262
	Tanworth-in-Arden	Stratford-on-Avon	2,582
34. Shrewsbury CC			77,830
	Abbey	Shropshire	2,971
	Bagley	Shropshire	3,339
	Battlefield	Shropshire	2,782
	Bayston Hill, Column and Sutton	Shropshire	9,640
	Belle Vue	Shropshire	3,270
	Bowbrook	Shropshire	2,882
	Burnell	Shropshire	3,430
	Castlefields and Ditherington	Shropshire	3,149
	Chirbury and Worthen	Shropshire	2,302
	Copthorne	Shropshire	3,030
	Harlescott	Shropshire	3,265
	Longden	Shropshire	3,108
	Loton	Shropshire	3,081
	Meole	Shropshire	3,002
	Monkmoor	Shropshire	3,108
	Porthill	Shropshire	3,399
	Quarry and Coton Hill	Shropshire	2,807
	Radbrook	Shropshire	3,296
	Rea Valley	Shropshire	3,143
	Severn Valley	Shropshire	3,262
	Sundorne	Shropshire	3,012
	Tern	Shropshire	3,567
	Underdale	Shropshire	2,985
35. South Staffordshire CC			72,132
	Bilbrook	South Staffordshire	3,160
	Brewood and Coven	South Staffordshire	5,374
	Cheslyn Hay North and Saredon	South Staffordshire	3,327
	Cheslyn Hay South	South Staffordshire	2,908
	Codsall North	South Staffordshire	3,265
	Codsall South	South Staffordshire	3,135
	Essington	South Staffordshire	4,020
	Featherstone and Shareshill	South Staffordshire	3,663
	Great Wyrley Landywood	South Staffordshire	3,639
	Great Wyrley Town	South Staffordshire	4,936
	Himley and Swindon	South Staffordshire	1,788
	Huntington and Hatherton	South Staffordshire	3,835
	Kinver	South Staffordshire	5,912
	Pattingham and Patshull	South Staffordshire	1,805
	Perton Dippons	South Staffordshire	1,530
	Perton East	South Staffordshire	1,689
	Perton Lakeside	South Staffordshire	4,657
	Trysull and Seisdon	South Staffordshire	1,759

Constituency	Ward	District/borough/city/county	Electorate
	Wombourne North and Lower Penn	South Staffordshire	5,203
	Wombourne South East	South Staffordshire	3,119
	Wombourne South West	South Staffordshire	3,408
36. Stafford CC			72,896
	Penkridge North East and Acton Trussell	South Staffordshire	2,949
	Penkridge South East	South Staffordshire	3,377
	Penkridge West	South Staffordshire	1,758
	Wheaton Aston, Bishopswood and Lapley	South Staffordshire	3,191
	Baswich	Stafford	4,993
	Common	Stafford	2,629
	Coton	Stafford	4,080
	Doxey & Castletown	Stafford	2,334
	Forebridge	Stafford	2,071
	Gnosall & Woodseaves	Stafford	5,177
	Highfields & Western Downs	Stafford	4,769
	Holmcroft	Stafford	5,334
	Littleworth	Stafford	4,282
	Manor	Stafford	5,150
	Milford	Stafford	2,438
	Milwich	Stafford	4,285
	Penkside	Stafford	2,411
	Rowley	Stafford	2,364
	Seighford & Church Eaton	Stafford	4,623
	Weeping Cross & Wildwood	Stafford	4,681
37. Staffordshire Moorlands CC			78,211
	Alton	Staffordshire Moorlands	1,151
	Bagnall and Stanley	Staffordshire Moorlands	1,376
	Biddulph East	Staffordshire Moorlands	4,516
	Biddulph Moor	Staffordshire Moorlands	1,375
	Biddulph North	Staffordshire Moorlands	4,391
	Biddulph South	Staffordshire Moorlands	1,416
	Biddulph West	Staffordshire Moorlands	4,271
	Brown Edge and Endon	Staffordshire Moorlands	4,005
	Caverswall	Staffordshire Moorlands	1,412
	Cellarhead	Staffordshire Moorlands	2,584
	Cheadle North East	Staffordshire Moorlands	2,771
	Cheadle South East	Staffordshire Moorlands	2,928
	Cheadle West	Staffordshire Moorlands	4,060
	Checkley	Staffordshire Moorlands	4,612
	Cheddleton	Staffordshire Moorlands	4,358
	Churnet	Staffordshire Moorlands	2,611
	Dane	Staffordshire Moorlands	1,275
	Forsbrook	Staffordshire Moorlands	4,182
	Hamps Valley	Staffordshire Moorlands	1,485
	Horton	Staffordshire Moorlands	1,572
	Ipstones	Staffordshire Moorlands	1,540
	Leek East	Staffordshire Moorlands	3,944
	Leek North	Staffordshire Moorlands	4,110
	Leek South	Staffordshire Moorlands	4,385
	Leek West	Staffordshire Moorlands	3,752
	Manifold	Staffordshire Moorlands	1,485
	Werrington	Staffordshire Moorlands	2,644
38. Stoke-on-Trent North BC			77,445
	Abbey Hulton and Townsend	Stoke-on-Trent	7,369
	Baddeley, Milton and Norton	Stoke-on-Trent	13,371
	Birches Head and Central Forest Park	Stoke-on-Trent	8,101
	Bradeley and Chell Heath	Stoke-on-Trent	3,906
	Burslem Central	Stoke-on-Trent	4,009
	Burslem Park	Stoke-on-Trent	4,054
	Etruria and Hanley	Stoke-on-Trent	3,875
	Ford Green and Smallthorne	Stoke-on-Trent	4,501

Constituency	Ward	District/borough/city/county	Electorate
	Goldenhill and Sandyford	Stoke-on-Trent	4,314
	Great Chell and Packmoor	Stoke-on-Trent	7,982
	Little Chell and Stanfield	Stoke-on-Trent	4,333
	Moorcroft	Stoke-on-Trent	3,779
	Sneyd Green	Stoke-on-Trent	3,936
	Tunstall	Stoke-on-Trent	3,915
39. Stoke-on-Trent South BC			76,296
	Bentilee and Ubberley	Stoke-on-Trent	7,346
	Boothem and Oak Hill	Stoke-on-Trent	4,338
	Broadway and Longton East	Stoke-on-Trent	4,002
	Eaton Park	Stoke-on-Trent	3,675
	Fenton East	Stoke-on-Trent	4,307
	Fenton West and Mount Pleasant	Stoke-on-Trent	4,073
	Hanley Park and Shelton	Stoke-on-Trent	2,507
	Hartshill and Basford	Stoke-on-Trent	4,582
	Joiner's Square	Stoke-on-Trent	3,759
	Lightwood North and Normacot	Stoke-on-Trent	3,766
	Meir Hay	Stoke-on-Trent	4,023
	Meir North	Stoke-on-Trent	4,507
	Meir Park	Stoke-on-Trent	3,886
	Meir South	Stoke-on-Trent	3,826
	Penkhull and Stoke	Stoke-on-Trent	4,682
	Sandford Hill	Stoke-on-Trent	4,405
	Springfields and Trent Vale	Stoke-on-Trent	4,688
	Weston Coyney	Stoke-on-Trent	3,924
40. Stourbridge BC			78,320
	Amblecote	Dudley	10,445
	Brierley Hill	Dudley	9,845
	Cradley and Wollescote	Dudley	9,756
	Hayley Green and Cradley South	Dudley	9,285
	Lye and Stourbridge North	Dudley	9,264
	Norton	Dudley	9,712
	Pedmore and Stourbridge East	Dudley	9,895
	Wollaston and Stourbridge Town	Dudley	10,118
41. Sutton Coldfield BC			73,172
	Sutton Four Oaks	Birmingham	18,833
	Sutton New Hall	Birmingham	17,195
	Sutton Trinity	Birmingham	19,140
	Sutton Vesey	Birmingham	18,004
42. Tamworth CC			73,305
	Bourne Vale	Lichfield	1,762
	Fazeley	Lichfield	3,458
	Little Aston & Stonnall	Lichfield	3,977
	Mease Valley	Lichfield	1,535
	Shenstone	Lichfield	1,890
	Whittington & Streethay	Lichfield	3,994
	Amington	Tamworth	5,756
	Belgrave	Tamworth	5,666
	Bolehall	Tamworth	5,680
	Castle	Tamworth	5,443
	Glascote	Tamworth	5,519
	Mercian	Tamworth	5,179
	Spital	Tamworth	5,372
	Stonydelph	Tamworth	5,608
	Trinity	Tamworth	5,843
	Wilnecote	Tamworth	6,623
43. Telford BC			76,556
	Brookside	Telford and Wrekin	4,090
	Dawley & Aqueduct	Telford and Wrekin	6,735
	Donnington	Telford and Wrekin	4,468

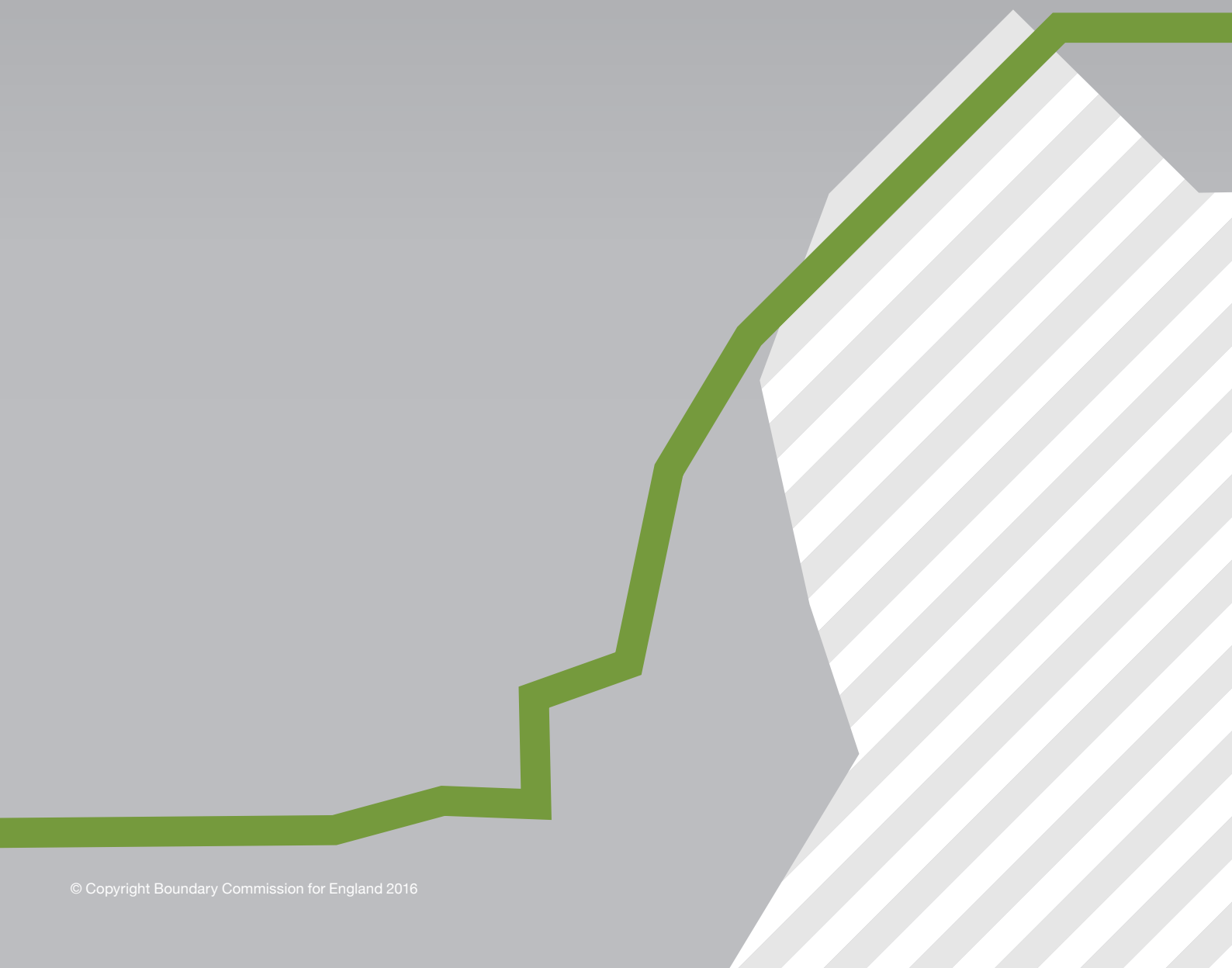
Constituency	Ward	District/borough/city/county	Electorate
	Hadley & Leegomery	Telford and Wrekin	6,382
	Horsehay & Lightmoor	Telford and Wrekin	4,273
	Ironbridge Gorge	Telford and Wrekin	2,459
	Ketley & Overdale	Telford and Wrekin	6,789
	Madeley & Sutton Hill	Telford and Wrekin	7,364
	Malinslee & Dawley Bank	Telford and Wrekin	4,151
	Oakengates & Ketley Bank	Telford and Wrekin	5,967
	Priorslee	Telford and Wrekin	4,506
	St. Georges	Telford and Wrekin	4,443
	The Nedge	Telford and Wrekin	6,536
	Woodside	Telford and Wrekin	3,915
	Wrockwardine Wood & Trench	Telford and Wrekin	4,478
44. Walsall Central BC			73,172
	Bentley and Darlaston North	Walsall	8,927
	Birchills Leamore	Walsall	9,516
	Blakenall	Walsall	8,023
	Darlaston South	Walsall	9,210
	Paddock	Walsall	9,429
	Palfrey	Walsall	9,880
	Pleck	Walsall	8,969
	St. Matthew's	Walsall	9,218
45. Warley BC			72,780
	Blackheath	Sandwell	9,124
	Bristnall	Sandwell	8,851
	Cradley Heath and Old Hill	Sandwell	9,982
	Langley	Sandwell	8,958
	Old Warley	Sandwell	8,965
	Rowley	Sandwell	9,036
	Smethwick	Sandwell	9,014
	Tividale	Sandwell	8,850
46. Warwick and Stratford-on-Avon CC			77,284
	Alcester & Rural	Stratford-on-Avon	2,878
	Alcester Town	Stratford-on-Avon	3,005
	Avenue	Stratford-on-Avon	1,902
	Bidford East	Stratford-on-Avon	2,664
	Bidford West & Salford	Stratford-on-Avon	2,592
	Bishopton	Stratford-on-Avon	2,488
	Bridgetown	Stratford-on-Avon	3,024
	Clopton	Stratford-on-Avon	1,690
	Guildhall	Stratford-on-Avon	2,457
	Hathaway	Stratford-on-Avon	2,023
	Henley-in-Arden	Stratford-on-Avon	3,147
	Kinwarton	Stratford-on-Avon	2,229
	Shottery	Stratford-on-Avon	2,358
	Snitterfield	Stratford-on-Avon	2,758
	Studley with Mappleborough Green	Stratford-on-Avon	2,849
	Studley with Sambourne	Stratford-on-Avon	2,864
	Tiddington	Stratford-on-Avon	2,805
	Welcombe	Stratford-on-Avon	2,309
	Wellesbourne East	Stratford-on-Avon	2,994
	Wellesbourne West	Stratford-on-Avon	2,446
	Wotton Wawen	Stratford-on-Avon	2,886
	Aylesford	Warwick	4,618
	Budbrooke	Warwick	4,705
	Emscote	Warwick	4,575
	Saltisford	Warwick	4,968
	Woodloes	Warwick	4,050
47. Wednesfield and Willenhall BC			77,139
	Short Heath	Walsall	8,583
	Willenhall North	Walsall	9,275

Constituency	Ward	District/borough/city/county	Electorate
	Willenhall South	Walsall	10,576
	Bushbury South and Low Hill	Wolverhampton	9,038
	Fallings Park	Wolverhampton	8,804
	Heath Town	Wolverhampton	7,435
	St. Peter's	Wolverhampton	6,321
	Wednesfield North	Wolverhampton	8,681
	Wednesfield South	Wolverhampton	8,426
48. West Bromwich BC			72,691
	Charlemont with Grove Vale	Sandwell	9,132
	Friar Park	Sandwell	8,741
	Great Barr with Yew Tree	Sandwell	9,438
	Hateley Heath	Sandwell	9,379
	St. Pauls	Sandwell	8,960
	Wednesbury North	Sandwell	8,959
	Wednesbury South	Sandwell	9,325
	West Bromwich Central	Sandwell	8,757
49. West Staffordshire CC			71,078
	Audley and Bignall End	Newcastle-under-Lyme	4,440
	Halmerend	Newcastle-under-Lyme	2,947
	Loggerheads and Whitmore	Newcastle-under-Lyme	5,403
	Madeley	Newcastle-under-Lyme	3,283
	Barlaston	Stafford	2,164
	Eccleshall	Stafford	5,074
	Fulford	Stafford	4,658
	St. Michael's & Stonefield	Stafford	7,766
	Swynnerton & Oulton	Stafford	4,679
	Walton	Stafford	4,548
	Blurton East	Stoke-on-Trent	4,226
	Blurton West and Newstead	Stoke-on-Trent	4,140
	Dresden and Florence	Stoke-on-Trent	3,793
	Hanford and Trentham	Stoke-on-Trent	9,519
	Hollybush and Longton West	Stoke-on-Trent	4,438
50. Wolverhampton South and Coseley BC			73,652
	Coseley East	Dudley	9,607
	Sedgley	Dudley	9,797
	Upper Gornal and Woodsetton	Dudley	10,114
	Bilston East	Wolverhampton	9,442
	Bilston North	Wolverhampton	8,649
	East Park	Wolverhampton	8,550
	Ettingshall	Wolverhampton	8,915
	Spring Vale	Wolverhampton	8,578
51. Wolverhampton West BC			77,373
	Blakenhall	Wolverhampton	7,892
	Bushbury North	Wolverhampton	8,812
	Graiseley	Wolverhampton	7,635
	Merry Hill	Wolverhampton	9,118
	Oxley	Wolverhampton	8,766
	Park	Wolverhampton	7,415
	Penn	Wolverhampton	9,759
	Tettenhall Regis	Wolverhampton	9,137
	Tettenhall Wightwick	Wolverhampton	8,839
52. Worcester BC			74,832
	Arboretum	Worcester	4,141
	Battenhall	Worcester	3,914
	Bedwardine	Worcester	6,304
	Cathedral	Worcester	6,826
	Claines	Worcester	6,397
	Gorse Hill	Worcester	3,407
	Nunnery	Worcester	5,590

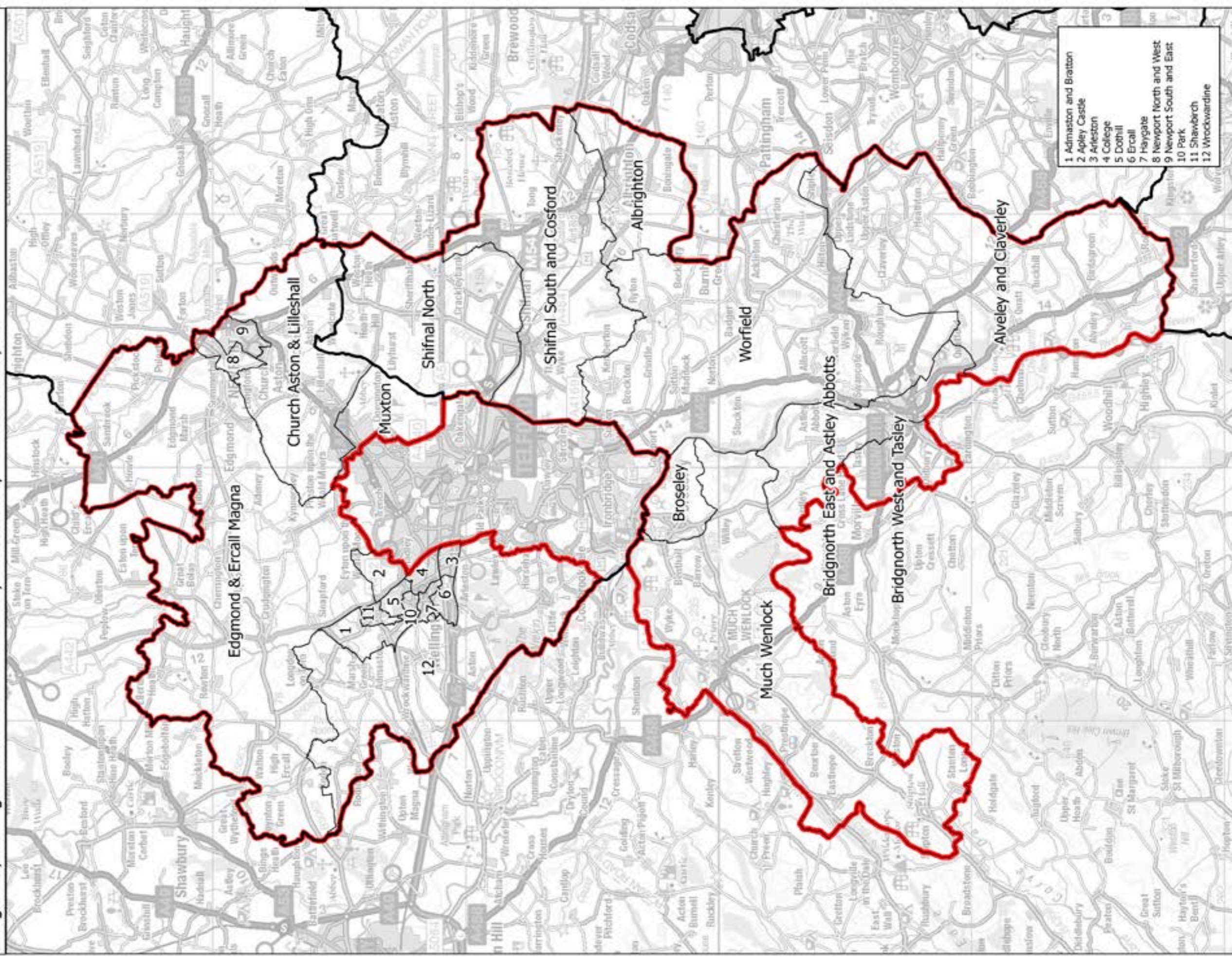
Constituency	Ward	District/borough/city/county	Electorate
	Rainbow Hill	Worcester	3,844
	St. Clement	Worcester	3,938
	St. John	Worcester	5,738
	St. Peter's Parish	Worcester	4,374
	St. Stephen	Worcester	4,057
	Warndon	Worcester	3,683
	Warndon Parish North	Worcester	3,965
	Warndon Parish South	Worcester	4,364
	Drakes Broughton	Wychavon	1,920
	Norton and Whittington	Wychavon	2,370
53. Wyre Forest CC			77,378
	Hartlebury	Wychavon	2,152
	Aggborough & Spennells	Wyre Forest	6,559
	Areley Kings & Riverside	Wyre Forest	6,437
	Bewdley & Rock	Wyre Forest	6,788
	Blakebrook & Habberley South	Wyre Forest	6,569
	Broadwaters	Wyre Forest	6,424
	Foley Park & Hoobrook	Wyre Forest	6,807
	Franche & Habberley North	Wyre Forest	7,591
	Lickhill	Wyre Forest	2,189
	Mitton	Wyre Forest	7,246
	Offmore & Comberton	Wyre Forest	7,295
	Wribbenhall & Arley	Wyre Forest	4,277
	Wyre Forest Rural	Wyre Forest	7,044

Glossary

Assessor	Statutorily appointed technical adviser to the BCE, being either the Registrar General for England and Wales or the Director General of Ordnance Survey.	Public hearing	Formal opportunity in a given area for people to make oral representations, chaired by an Assistant Commissioner. In each region of England there may be no fewer than two and no more than five hearings, and each may last a maximum of two days.
Assistant Commissioner	Independent person appointed at the request of the BCE to assist it with the discharge of its functions.	Representations	The views provided by an individual, group or organisation to the BCE on its initial or revised proposals, either for or against, including counter-proposals and petitions.
Borough constituency (abbreviated to BC)	Parliamentary constituency containing a predominantly urban area.	Review date	Proposals must be based on the numbers of electors on the electoral registers on this date. Defined in the 2011 Act as the date two years and ten months before the final report is to be submitted (i.e. 1 December 2015 for the review that is to conclude with a final report by 1 October 2018).
County constituency (abbreviated to CC)	Parliamentary constituency containing more than a small rural element.	Revised proposals	The initial proposals as subsequently revised.
Designation	Classification as either a borough constituency or as a county constituency.	Rules	The statutory criteria for Parliamentary constituencies under Schedule 2 to the Parliamentary Constituencies Act 1986 (as amended).
Electorate	The number of registered Parliamentary electors in a given area.	UK electoral quota	The average number of electors in a constituency, found by dividing the total electorate of the UK (less that of the four specific 'protected' constituencies) by 596.
(Statutory) Electorate range	The statutory rule that requires the electorate of every constituency (as at the review date) to be within 5% of the UK electoral quota.	Unitary authority	An area where there is only one tier of local council (above any parish or town council). Contrasted with those 'shire district' areas that have two tiers (i.e. both a non-metropolitan county council and a district/ borough/city council).
Final recommendations	The recommendations submitted in a formal final report to Parliament at the end of a review. They may – or may not – have been revised since the initial proposals in any given area.		
Initial proposals	First formal proposals published by the BCE during the review for public consultation.		
Periodical report	Report to Parliament following a general review of Parliamentary constituencies.		
Places of deposit	In each constituency the Commission will make available hard copies of its initial proposals (including report and maps). The places of deposit where the public may inspect the proposals are usually the offices of the relevant local authority, although other public places such as libraries may be used. The Commission will publish a full list of places of deposit on its website.		

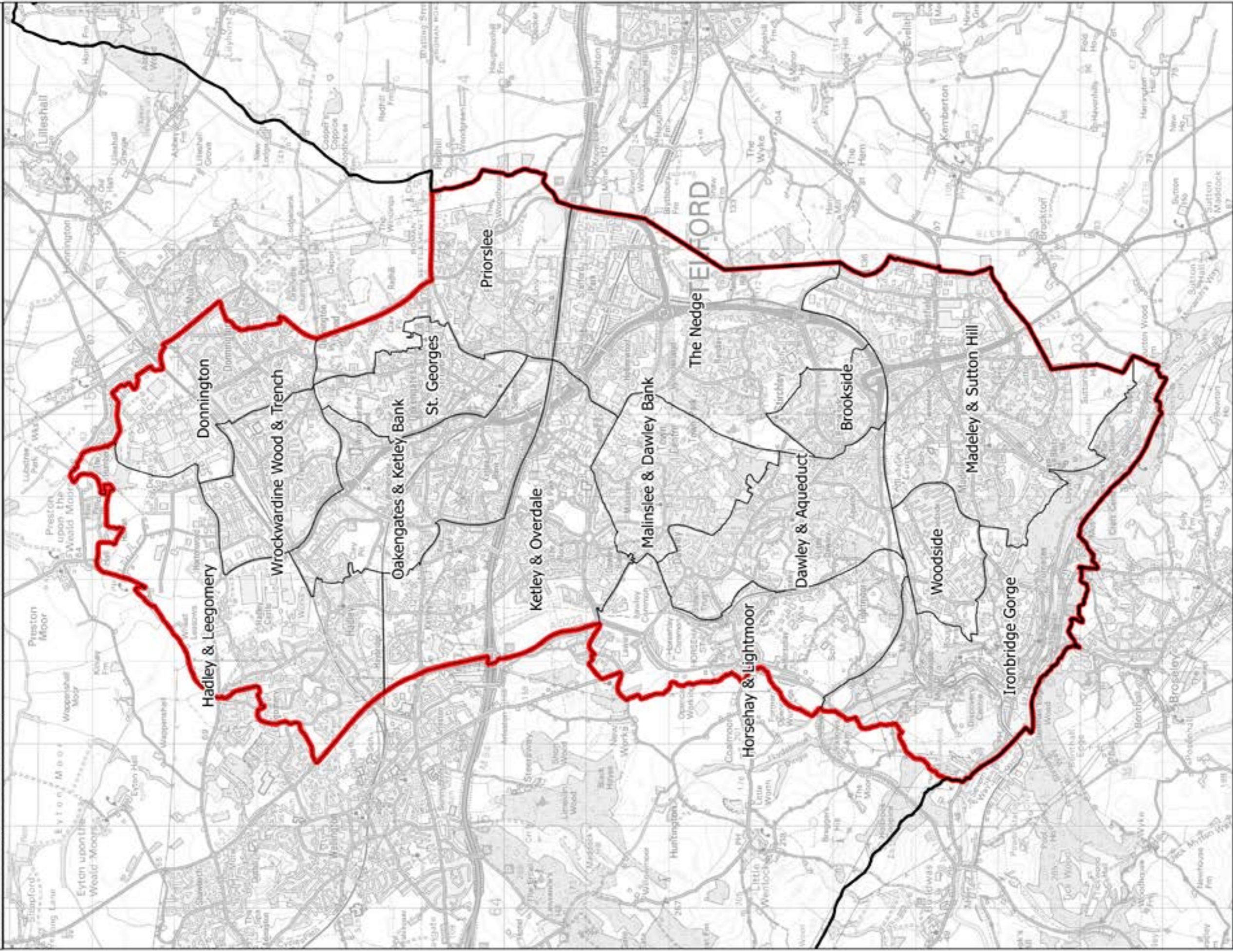


**Boundary Commission for England - Initial Proposals for the West Midlands Region
Bridgnorth, Wellington and The Wrekin County Constituency - Electorate 77,256**



This map is reproduced from Ordnance Survey material with the permission of Ordnance Survey on behalf of the controller of Her Majesty's Stationery Office (C) Crown Copyright 2016. All rights reserved. Unauthorised reproduction infringes Crown copyright and may lead to prosecution or civil proceedings. Boundary Commission for England 100018098, 2016.

Boundary Commission for England - Initial Proposals for the West Midlands Region
Telford Borough Constituency - Electorate 76,556



— Constituency — Local authorities — Wards

This map is reproduced from Ordnance Survey material with the permission of Ordnance Survey on behalf of the controller of Her Majesty's Stationery Office (C) Crown Copyright 2016. All rights reserved. Unauthorised reproduction infringes Crown copyright and may lead to prosecution or civil proceedings. Boundary Commission for England 100018098, 2016.

Boundary Review Committee - Terms of Reference and Procedure

The Committee has the responsibility and delegated powers to act on behalf of the Council in respect of the following electoral arrangements for the Borough.

TERMS OF REFERENCE

Boundary Reviews

1. Duty to prepare information on and to recommend consultation responses to Council on Parliamentary Boundary Reviews.
2. Duty to prepare information on and to recommend consultation responses to Council on Periodic and further Electoral Reviews.
3. Duty to prepare information on and to recommend consultation responses to Council on Reviews of European Parliamentary electoral regions.
4. Duty to prepare information on and recommend consultation responses to Council on all other electoral arrangement reviews.

Community Governance Reviews

5. Dealing with all matters relating to Community Governance Reviews.

Parishes

6. Grouping parishes, dissolving groups and separating parishes from groups.

Polling Districts

7. Duty to divide the constituency in to polling districts.
8. The power to divide electoral divisions into polling districts at local government elections.

Elections

9. As set out in Schedule 1 to the Local Authorities (Functions and Responsibilities) (England) Regulations 2000/2853 (as amended).

General

10. Annually at the first meeting after the Annual Council Meeting consider its terms of reference.

PROCEDURE

As a general rule the Council Procedure Rules govern the way that committees operate but these, with the exception of paragraph 12 of the Council Procedure Rules, may be varied or suspended at the discretion of the Chairman of the Committee in the interests of efficient and effective management of the committee.