

Care & Support, Family &
Community, Safeguarding, School
Improvement

Service Review And Structure
Proposals – Phase 1
Launched on 10th February 2011

**‘One Council, One Team,
One Vision’**

The Service Review Process

- Commenced July 2010
- Fundamental review of service delivery
- Engagement
- 'Critical Friends' expertise (IEWM funded)
- Analysis of Government policy – now & future
- Financial, socio-demographic and performance issues
- Service issues raised through case files/studies

'One Council, One Team, One Vision'

Key Issues & Drivers - 1

- A new fast-moving Government agenda – Education, Social Care, Health, Child Protection, Early Years, Early Intervention, Child Poverty
- Financial – demography, children in care, SEN, secondary school pupil numbers, continuing health care
- Demography – ageing population, complexity of need, deprivation
- Performance – increasing numbers of children in care, high level of SEN statements, variable attainment levels, high NEETs

'One Council, One Team, One Vision'

Key Issues & Drivers - 2

- Silo working and artificial divides
- Inconsistent, ineffective communication
- Multiple access points and confusion
- Complex processes
- Information held in too many places and not joined up
- Passing the baton – high volumes passed on to safeguarding help desk
- High levels of unplanned/emergency placements, limited respite care and crisis intervention
- Complex pooled budget arrangements

'One Council, One Team, One Vision'

Service Design Principles

- Early intervention & prevention
- Supporting independence and personalisation
- Self help/self service – for those who are able to
- Simplifying access to services
- De-cluttering processes and more effective use of ICT
- Economies of scale, removing duplication, better integration
- Improve communication
- Provide the right services at the right time in the right place

'One Council, One Team, One Vision'

Priorities

- Keep vulnerable children, young people and adults safe from harm and neglect
- Improve skill levels and educational attainment
- Enable choice and control over lives for those who are old, ill or disabled
- Improve targeted support for children and families and the most disadvantaged
- Right help and support for those who experience barriers to learning and employment
- Support young people, especially vulnerable, into adult life
- Healthy and positive lifestyles

'One Council, One Team, One Vision'

Proposal – Family & Community

- Reconfigured and joined up universal and specialist services
- Empowering people to help themselves
- Sports and Learning Community – hubs for local service delivery
- Meeting the needs of local people, particularly the most vulnerable
- New approach to assessment and support for children with SEN
- Reducing the need for assessment

'One Council, One Team, One Vision'

Proposal – Family & Community

- Family Connect – single integrated point of contact for services
- Early Intervention Service – develop Family Centres offering a range of services incorporating some clusters services
- Targeted Family & Community Services –
 - Children’s Specialist Services – for children and young people with SEN, severe or complex behavioural needs and disabilities
 - Cohesion – building safe and cohesive families and communities
- Putting ‘Think Family’ principles into action

'One Council, One Team, One Vision'

Proposal – Safeguarding

- Supporting families to look after their children
- Keeping core safeguarding services stable during adult and children's services redesign
- Some increase in capacity at team leader level to reflect high demand and complexity of work

'One Council, One Team, One Vision'

Proposal – Safeguarding

- Integration of family support services – not stand alone
- Integration of safeguarding help desk/duty team function within Family Connect
- Integration of Safeguarding and Family & Community management teams
- Continue to work towards integration of adult and children's safeguarding

'One Council, One Team, One Vision'

Proposal – School Improvement

- Build on current good practice that already exists across the Borough
- Work with all schools to ensure that the ‘education offer’ to children and families is of the highest possible standard
- Work with community and trust secondary schools, in the first instance, to develop a new schools partnership trust model as part of Sports and Learning Communities

'One Council, One Team, One Vision'

Proposal – School Improvement

- **Consultancy and Advisory** team working across secondary, primary and special schools on a traded services model
- **Leadership and Management** to ensure that best practice is developed to aid school to school support.
- **Achievement and Standards** which will retain the statutory duty to ensure that all schools are accountable for their performance.

'One Council, One Team, One Vision'

Making The Change

- ICT Development
- New ways of Working
 - Processes and policies – Common Assessment Framework
 - Set up a new integrated planning and placements service to coordinate activity relating to children and young people
 - Matrix management across services
 - Working environment and patterns

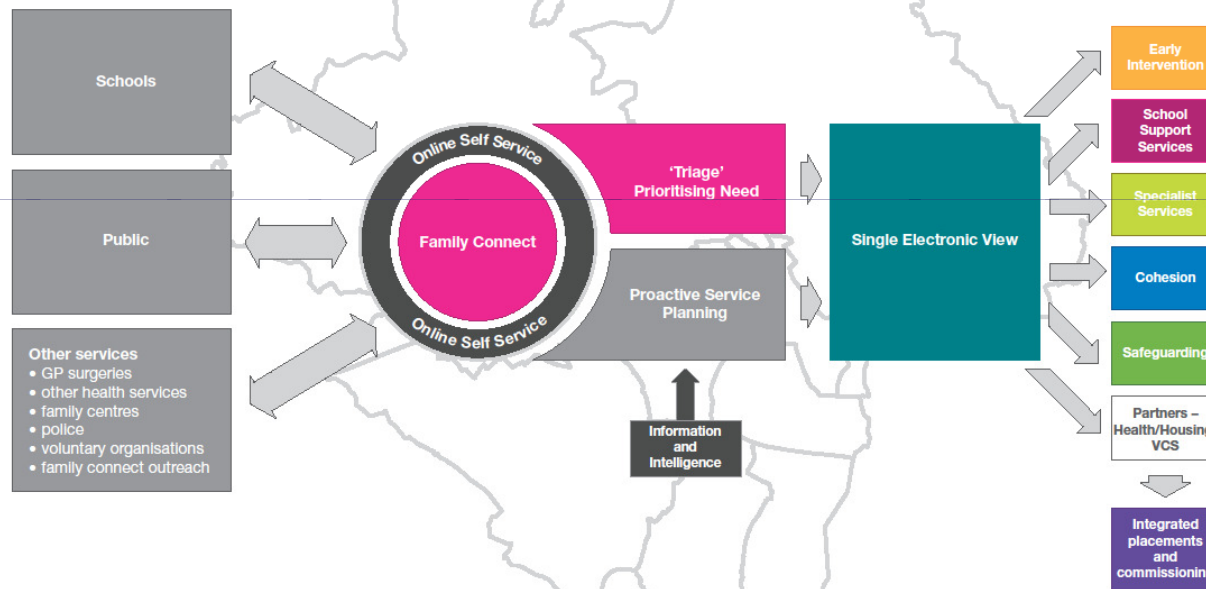
'One Council, One Team, One Vision'

Making The Change

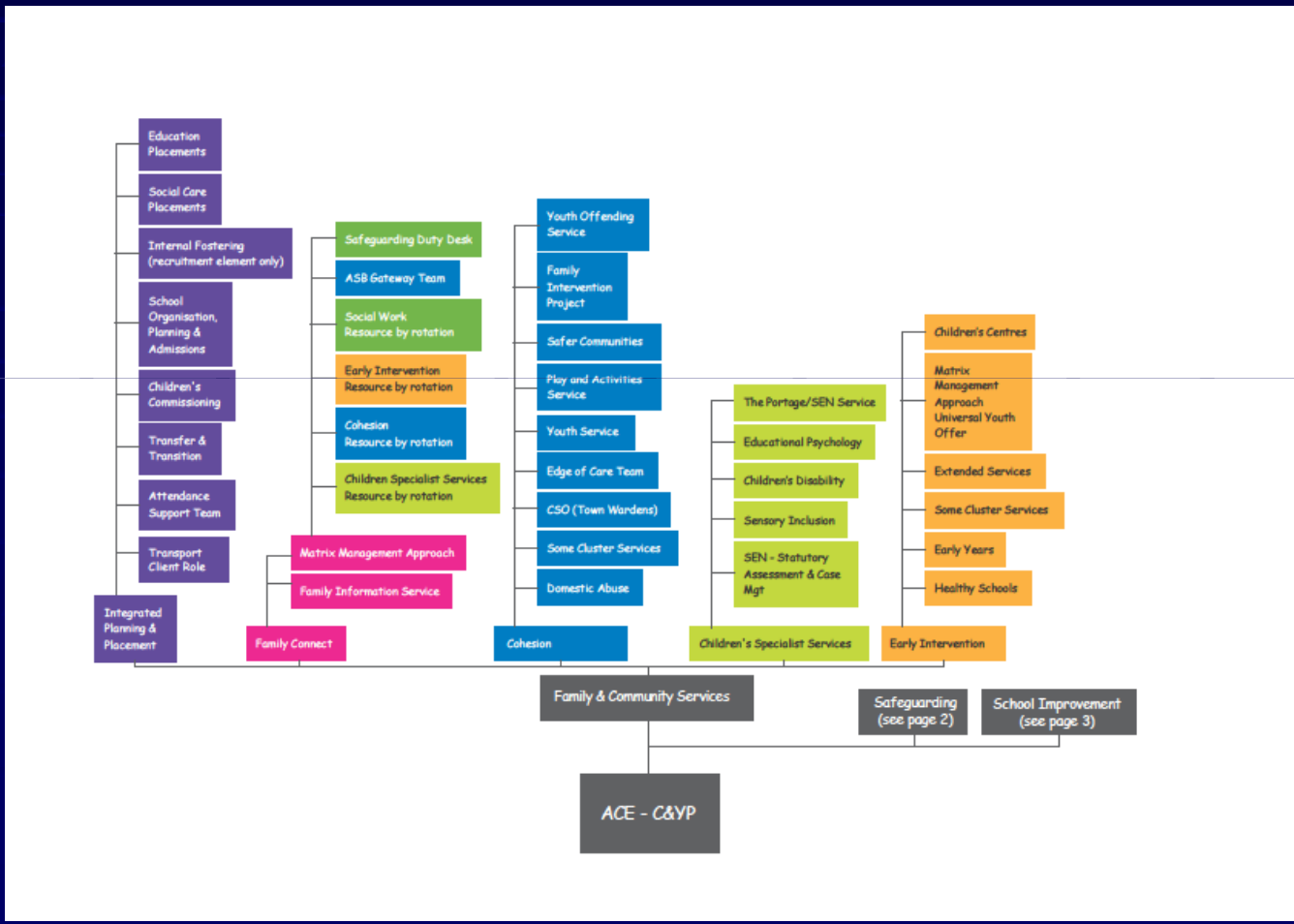
- Working with the voluntary and independent sector and other partners
- Putting in place new partnership arrangements, including establishing a Health and Well-Being Board
- Developing the vision
- Accommodation rationalisation
- Personalisation
- New models of delivery

'One Council, One Team, One Vision'

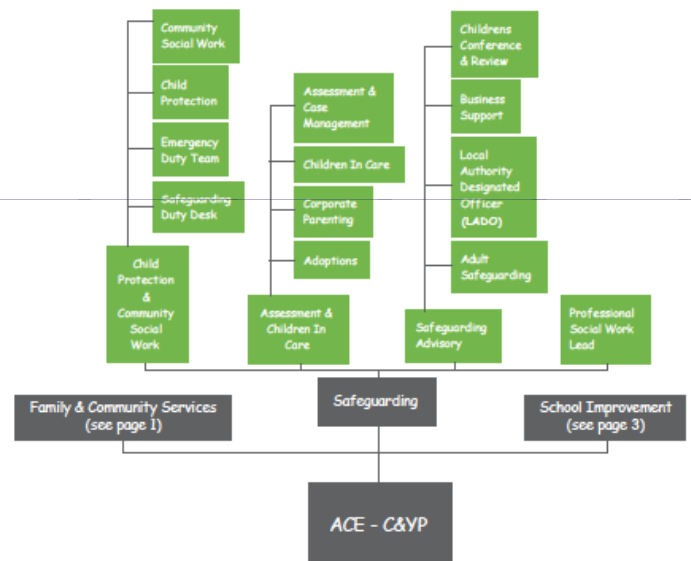
Family Connect



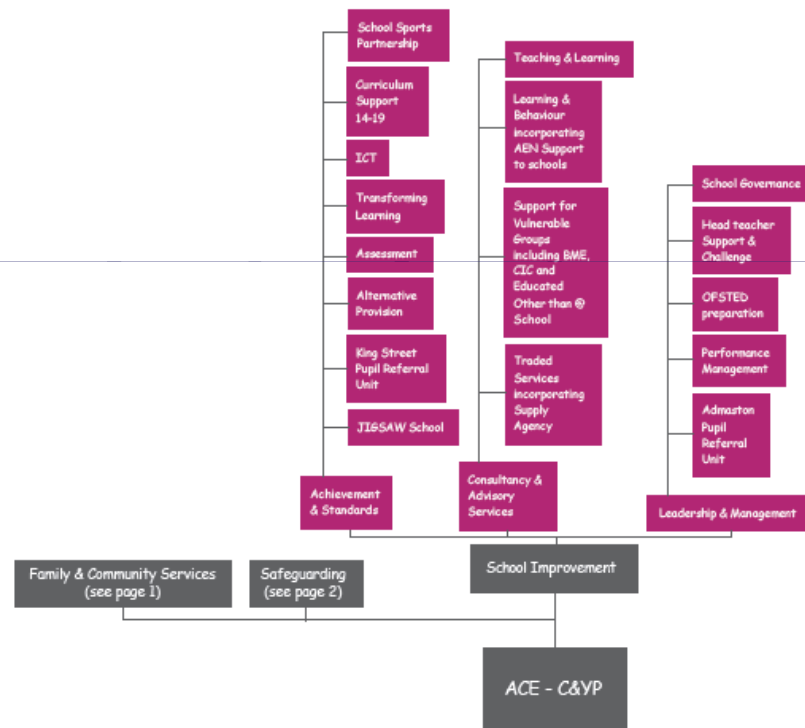
'One Council, One Team, One Vision'



'One Council, One Team, One Vision'



'One Council, One Team, One Vision'



'One Council, One Team, One Vision'

Timeline – Draft Proposals

10 th February 2011	Proposals launched with employees/trade unions. Information pack emailed to all
11 th March 11	2 nd formal meeting with employees
6 th April 11	3 rd formal meeting with employees
11 th May 11	Consultation ends (5pm)
12 th May 11	School Improvement structure confirmed
16 th May 11	Structure confirmed for all other areas
12 th May 11	School Improvement recruitment commences
16 th May 11	Recruitment commences other areas

Questions?

'One Council, One Team, One Vision'

TELFORD & WREKIN COUNCIL

CHILDREN & YOUNG PEOPLE SCRUTINY COMMITTEE– 09.08.11

2011/12 WORK PROGRAMME

REPORT OF SCRUTINY GROUP SPECIALIST

1.0 PURPOSE

- 1.1 To enable Members to plan the work programme for the Children & Young People Scrutiny Committee.

2.0 RECOMMENDATIONS

- 2.1 Members agree the issues the Children & Young People Scrutiny Committee will scrutinise during 2011/12.

3.0 PREVIOUS MINUTES

- 3.1 N/A

4.0 BACKGROUND

- 4.1 The Scrutiny arrangements established in May 2011 and the process for selecting topics for the Scrutiny Work Programme enable each Scrutiny Committee to determine its own work programme within the resources available.
- 4.2 Scrutiny Assembly Members, Cabinet Members, Senior Officers, Town & Parish Councils and partner organisations were invited to put forward their suggestions for the 2011/12 Scrutiny Work Programme. A total of 57 suggestions were received. The Scrutiny Management Board met on 12th July to review the suggestions and to agree which Scrutiny Committee, or Scrutiny Committees for cross-cutting issues, would be responsible for each suggestion.
- 4.3 The agreed allocation of statutory scrutiny functions to the Scrutiny Committees is set out in the table below.

Duty	Scrutiny Committee
Scrutiny of NHS bodies and emerging health and social care structures	Health Adult Social Care

Crime & Disorder Reduction Partnership (Safer, Stronger Communities Partnership)	Scrutiny Management Board
Flood & Water Management	Scrutiny Management Board
Partners under LAA (under review)	Co-operative & Communities
Social Care referrals from the LINK	Adult Social Care
Scrutiny of Budget Proposals under the terms of the Council's Constitution	Budget & Finance

- 4.4 The Scrutiny Committees will determine the topics for their own work programme. Each Committee will consider the suggestions referred by the Scrutiny Management Board, relevant issues outstanding from previous scrutiny arrangements and any other suggestions the Committee members wish to put forward.
- 4.5 Other Scrutiny suggestions received during the year will be considered at the following meeting of the Scrutiny Management Board, or referred to the relevant Scrutiny Committee to consider at its next meeting.

5.0 SCRUTINY COMMITTEE MEETINGS

- 5.1 Scrutiny Committees will hold meetings as appropriate to deliver the work programme and within the resources available. The Scrutiny Management Board will co-ordinate the allocation of resources where there are competing pressures.
- 5.2 Scrutiny Committee meetings will be held as public meetings whenever possible.

6.0 ISSUES FOR SCRUTINY

- 6.1 The suggestions that were allocated to the Children & Young People Scrutiny Committee by the Scrutiny Management Board, and the outstanding issues from previous scrutiny arrangements are set out in Appendix 1 below.

7.0 EQUAL OPPORTUNITIES

- 7.1 Members will consider the equal opportunities implications of the issues identified for further scrutiny.

8.0 ENVIRONMENTAL IMPACT

8.1 There are no environmental impacts directly arising as a result of this report.

9.0 LEGAL COMMENT

9.1 The operation of the Scrutiny function of the Council is set out in Part 2, Articles 6 & 8 and Part 4, Section 5 of the Council's Constitution: Scrutiny Procedure Rules. These Rules provide at 3.1 and 3.3 that the Scrutiny Management Board will co-ordinate, oversee and monitor the delivery of the Scrutiny work programme and will allocate suggestions to the Committees and make recommendations about priorities. The statutory functions for Scrutiny are set out in paragraph 4.3 of Section 5. This report and its recommendations accord with the provisions of Part 4, Section 5 of the Constitution.

10.0 LINKS WITH CORPORATE PRIORITIES

10.1 The Scrutiny Work Programme will link in with emerging priorities.

11.0 FINANCIAL IMPLICATIONS

11.1 There are no direct financial implications arising from this report. Support for the co-ordination and preparation of the Scrutiny Work Programme is in the form of officer time which is funded from existing budgets.

12.0 OPPORTUNITIES AND RISKS

12.1 The work of the Scrutiny Committees is a major opportunity for Members and Co-optees to influence the work and policy of the Council and partner organisations. In order to manage the Scrutiny work load effectively Members should identify the issues where Scrutiny can add the most value. Identifying too many issues for the Committee work programme will mean some issues will not be completed with the agreed timescales.

13.0 WARD IMPLICATIONS

13.1 Borough Wide

Report prepared by Stephanie Jones, Scrutiny Group Specialist, 01952 383114

APPENDIX 1

SUGGESTIONS FOR THE CHILDREN & YOUNG PEOPLE SCRUTINY COMMITTEE

	Key issue or service area	Area for Scrutiny	Comments of Scrutiny Management Board
1	Youth Services	Provision of youth services to what level do they exist? Are they adequate or fit for purpose?	Refer to committee to consider for the work programme
2	Corporate Parenting	How Members endorse/improve Corporate Parenting role and continue to meet with Children in Care	Refer to committee to consider for the work programme
3	Corporate Parenting	The recruitment and retention of foster carers	Refer to committee to consider for the work programme
4	Corporate Parenting	The recruitment and retention of social workers	Refer to committee to consider for the work programme
5	Children's safeguarding procedures	I am concerned about the strategic oversight of children's welfare and safety and want to investigate whether the recent and prolonged absence of a qualified and experienced Corporate Director for children's services has impacted on the capacity of the Council to adequately ensure the safety of children in the borough.	Refer to committee to consider for the work programme
6	School Improvement Team	In the light of changes to school funding, to review the services provided by the School Improvement Team during this financial year to inform services for the following year/s.	Refer to committee to consider for the work programme
7	That Short Breaks for Disabled Children provides a service that meets the requirements of the guidelines and meets the Duty imposed on the Local Authority. This Duty includes meeting the needs of children and young people and their families and their involvement in decision making. Outcome for children, young people and their families are positive. Short Breaks provide the Local Authority with an effective tool to provide support, which has an immediate and long term financial benefit	Disabled Children – service provision through Partnership working ;- Disabled Children Team – working in partnership with all Local Authority children's services, NHS partners and Voluntary Sector. Involvement of children/young people and their families. Community involvement and voluntary sector provision	Refer to committee to consider for the work programme Suggested timing October 2011
8	Leisure & Libraries	Access to leisure & library facilities at HLC, what are the barriers and how do we	Refer to committee to consider for the work programme

		remove them?	
9	Child poverty	Spot review of how staff resources are targeted with particular regard to Child Poverty.	Refer to committee to consider as a major review

ISSUES OUTSTANDING FROM PREVIOUS SCRUTINY ARRANGEMENTS

- Review the detailed proposals for Adult & Children’s services
- BSF programme
- Monitor progress on addressing issues raised by children & young people in care relating to contact
- Update on the premises situation for the Joint Adoption Service
- Write to schools to encourage them to take part in the UK Youth Parliament elections – a letter has been drafted.
- 6 monthly monitoring of placement stability for CIC and out of borough placements
- Annual monitoring of educational attainment of CIC